



Building Information Modelling (BIM)

NEW!

Courses and qualifications
available from the BSI Academy



Contents

Great BIM delivery needs great people	3
Flexible learning, trusted expertise	4
BIM courses and qualifications	5
Validate skills with BSI BIM Qualifications	6
BIM Qualification Pathways	7
How learning supports your BIM journey	8
Testimonials and feedback	9
Get in touch	10




This guide is interactive!

Click on the courses to learn more.



Get in touch:
training@bsigroup.com | 0345 086 9000





Great BIM delivery needs great people

Building Information Modelling (BIM) is all about collaboration – between asset owners, operators, designers, contractors, and maintenance teams, enabling enhanced information communication across these disciplines.

As the built environment continues to evolve, it's critical to ensure that you and your teams have the relevant knowledge and capability to achieve best practice – and a continued drive to commit to it.

With the BSI Academy, you can access high-quality, relevant, and up-to-date learning, in a way that works for you.

Flexible learning, trusted expertise

People learn in different ways, so we've devised a range of delivery formats to suit all needs.

Whether you prefer the interaction of classroom learning or the flexibility of eLearning, we have a format for you.

In 2024, we achieved an outstanding **NPS score of 60**, a testament to the high-quality experience we provide across a variety of delivery methods.

Live online training

Learn from the comfort of your home or a quiet space, for convenience

Classroom-based training

Convenient locations and dates, in-person with like-minded learners



On-demand eLearning

Self-paced, online, available 24/7 – for complete flexibility

In-house training

In-person or online to suit your organization's needs

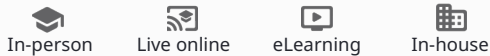


Get in touch:
training@bsigroup.com | 0345 086 9000

BIM courses and qualifications

Whether you're an owner, design consultant, main contractor, sub-contractor, or project manager, our courses will help you to understand the opportunities that collaboration brings within a digital built environment.

Learn in a way that works for you:



Get in touch:
training@bsigroup.com | 0345 086 9000

BIM Fundamentals

Grasp the concepts, principles and terminology of BIM. Gain knowledge of the 'Information Delivery Cycle' in line with ISO 19650-1. Develop an action plan to put it into practice.



ISO 19650 Part 2: Project Delivery

Understand the information management processes needed for a design and construction project to be delivered using BIM.



ISO 19650 Part 3: Information Management in the Operational Phase of the Assets

Understand the asset information management process set out in ISO 19650-3 and how this links with other parts of the ISO 19650 series.



ISO 19650 Part 4: Information Exchange

Learn the benefits of the ISO 19650 digital information exchange between design/supply chain and the client/operator.



ISO 19650 Part 5: Security and BIM

Discover how to navigate the security implications that rise from BIM, according to ISO 19650, and learn how to develop a security strategy.



NEW!

ISO 19650 Part 6: Health and Safety

Increase your knowledge of designing and implementing health and safety plans within a collaborative or BIM project.



NEW!

BIM Awareness

Help the wider business to understand the significance of BIM, and the role they can play in ensuring compliance with our bite-sized eLearning.



BIM Senior Briefings/Workshops

Discover the business value of collaborative BIM and how it can reshape construction, asset management, and strategic project delivery.



Earn a BSI BIM Qualification

Combine BSI BIM courses and exams to gain a BSI Qualification, showcasing your BIM credentials.



Validate skills with a BSI BIM Qualification

Access a comprehensive suite of carefully-assessed qualifications to help you develop expertise to the highest level.

BIM qualifications provide a Mark of Trust, reassuring clients, bid-writers and project teams that your skills have been validated.

Available at three levels for both **Asset Information** and **Project Information**.



BIM Practitioner Qualification

Demonstrate a strong understanding of BIM and information management.

Including information exchange, data schema, and quality.



BIM Professional Qualification

Showcase your grasp of information security and governance.

Prove your ability to apply information management to enhance health and safety.



BIM Certified Professional Qualification

Certified Professional evidences your industry experience.

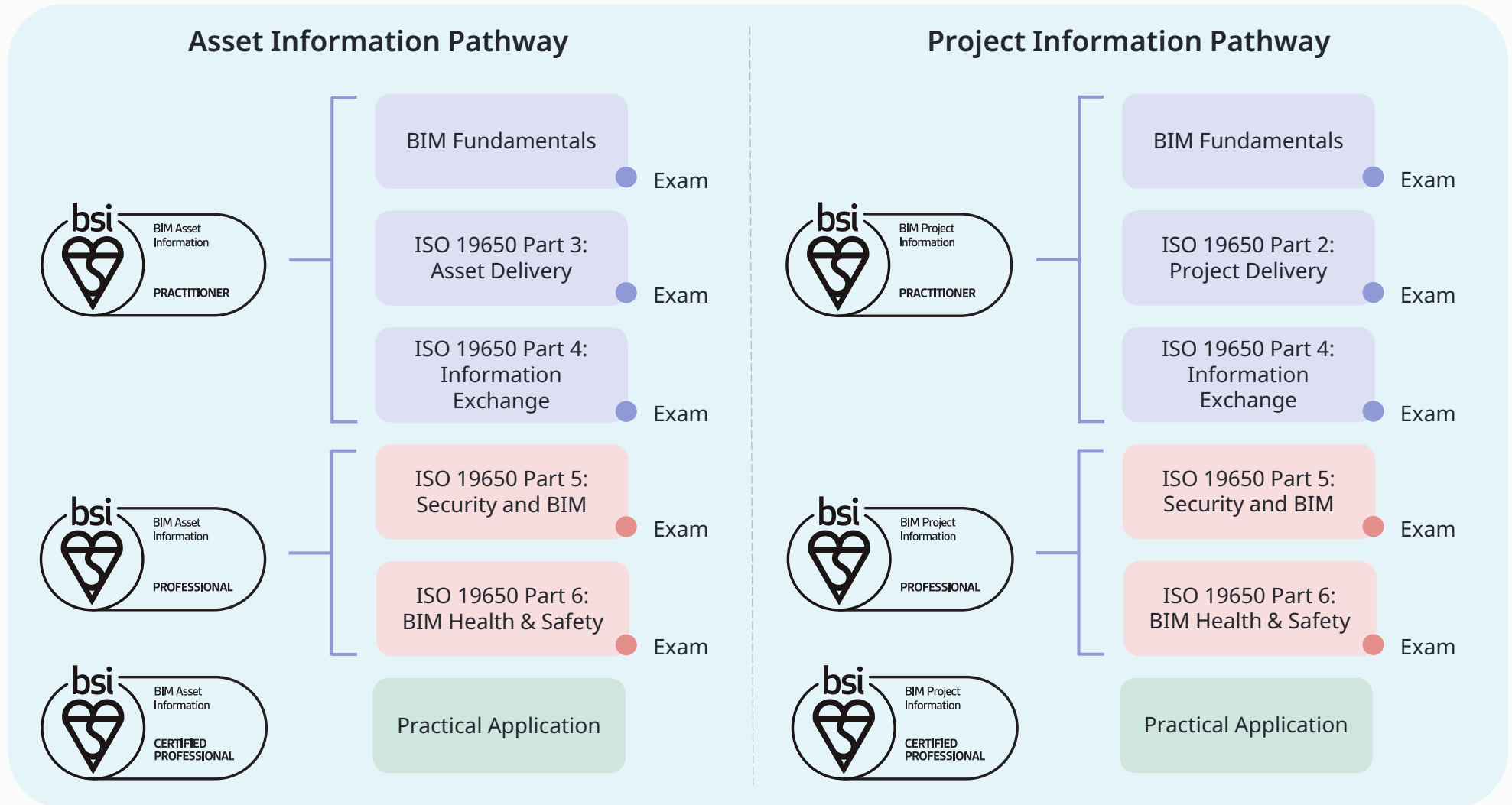
It shows your skills in information management and collaborative working are up-to-date and in practice.



Get in touch:
training@bsigroup.com | 0345 086 9000

BIM Qualification pathways

Combine courses and build your knowledge in a logical progression with BIM learning pathways.



How learning supports your BIM journey

Benefits to the individual

- Fill gaps in your knowledge regarding best practice BIM
- Demonstrate a commitment to your industry through CPD
- Broaden your career, helping you unlock further opportunities
- Study a pathway with a recognized outcome – a BSI qualification
- Develop a more integrated, secure, and sustainable BIM practice within your organization
- Have your skills and knowledge validated, highlighting your value

Benefits to the organization

- Raise internal standards and embed best practice across your teams
- Increase efficiency and visibility at the operational stage
- Reduce uncertainty and increase speed to delivery
- Control whole-life costs and environmental data
- Reassure your clients that relevant expertise is being provided through BIM learning and qualifications
- Gain more efficient processes and enhance stakeholder collaboration



What our BIM learners say:

"The course was fantastic. It picks up on all the latest industry standards for BIM. I highly recommend it to everyone in the field of BIM."

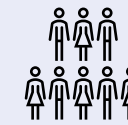
"It was the best course I've been on and becoming a BSI BIM Practitioner will enhance my career prospects tenfold."

"It was excellent, cleared up a lot of terminology and topics I needed clarity on and was a good learning experience for all ages and experiences."

"I would highly recommend the full pathway learning for anyone interested in a comprehensive understanding of the subject."

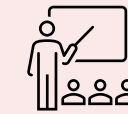


Our impact last year:



28,000+

learners accessed our high-quality courses



9.43/10

was our average tutor competency rating



6,000

BSI Qualifications were awarded to learners



80+

new courses developed, growing our portfolio to over 450+ courses



Get in touch:
training@bsigroup.com | 0345 086 9000

Get in touch

Our team can help you identify the best courses and qualifications to enhance your skills, expand your knowledge, and achieve your goals.

Visit **bsigroup.com/training**



Call **0345 086 9000**



Email **training@bsigroup.com**



Get in touch:
training@bsigroup.com | 0345 086 9000

