



Webinar:

Benchmark certification update:
Understanding the new process and
requirements

03/12/2026



Agenda

Overview of the changes

Meet the team

Overview of the process

Ongoing requirements and 5 year review

Pricing structures



Introductions



Hollie Rowland

Global Head of Certification at BSI, responsible for shaping and overseeing certification strategy and delivery worldwide, while partnering with organisations to help them understand evolving requirements and best-practice expectations.



Nathan Shipley

Certification Technical Expert at BSI, specialising in product assessment, scheme requirements, and compliance guidance for organisations working toward Benchmark certification.



We help our clients to...

Meet legislative and regulatory requirements



Fulfil supply chain specifier expectations



Demonstrate compliance and due diligence



Drive continual improvement and NPD



Access new markets



Win contracts and gain competitive advantages



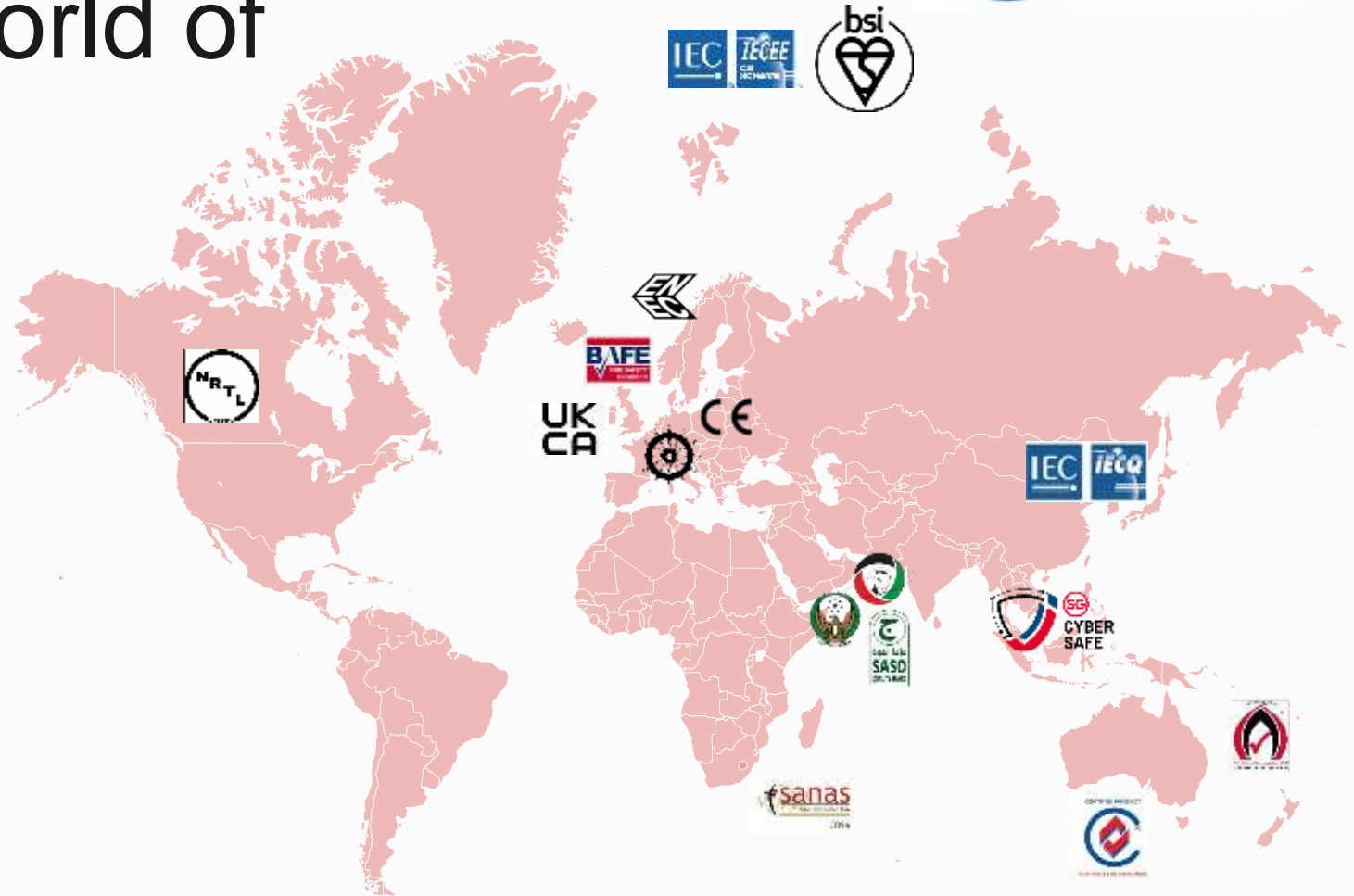
We provide market access and market differentiation through testing and certification.

Accelerating your progress into a world of opportunity

Global market access

BSI is your **one-stop shop** for global market access **testing** and **certification**.

If you want to **export** your **product**, we can help with product testing and certification for your chosen markets. We can often issue **multiple market access certificates** from the same testing programme, providing you with a **faster** more **cost-effective** path to market access.



Why have we globalised Benchmark

Primarily JAS ANZ have implemented changes to how they expect a Type 5 certification scheme to be run

These changes mean BSI can align Benchmark with other schemes like Kitemark TM

Benchmark has a global client base across Australasia, Asia, Europe, Africa and the Americas

To bring its structure and processes in line with the rest of BSI's Product Certification

Promote local delivery of assessments to provide better value and reduce our carbon footprint

Conduct multiple assessments at the same time



Meet the Team!



We have created a global team to progress the Benchmark workload and backlog

Krishna Patel

Based in the UK

Krishna.Patel@bsigroup.com

Funda Olmez

Based in Germany

funda.olmez@bsigroup.com

Asanka Sandakelum

Based in Malaysia

asanka.sandakelum@bsigroup.com

Nur Aimi Mohd Nasir

Based in Malaysia

nuraimi.mohdnasir@bsigroup.com

Amit Bhujbal

Based in India

amit.bhujbal@bsigroup.com

Shaun Li

Based in Australia

shaun.li@bsigroup.com

BSI is committed to Benchmark and looking to expand it

We had four individuals covering all aspects of Benchmark

We now have a global team focused on Benchmark and we are recruiting more

Certification Managers

We have a dedicated team of six certification Managers based predominantly in the APAC region

Assessors

Globally we have 63 assessors that can deliver assessments locally in local language across Asia, Middle East, Europe, Africa and the Americas

Management team

We have a dedicated management team looking after Benchmark with that as their sole function



Updated Benchmark terminology



We are changing some of the terminology which will be fully listed on PP169 which will be in the public domain soon. Some of the key changes are;

Licence holder (Primary)

Legal entity with responsibility for product listed on the certificate in the marketplace.

Manufacturer

The organisation responsible for the manufacture of the product, maintaining ownership and control of the Quality Plan. A manufacturer can also be the Licence Holder.

Manufacturing facility

A factory or production plant producing a finished product, or components that form part of that finished product, under controlled conditions established in the Quality Plan

Supplier Licence Holder

Legal entity placing (Primary) Licence Holder certified product into the marketplace under its own branding or labelling. Also referred to as Own Brand Labelling (OBL)

Scope of Certification

Identification of the product(s), process(es) or service(s) for which certification is granted.

Accreditation

The procedure by which an authoritative body gives formal recognition of the competence of a Certification Body

Extensions to scopes – adding products

2. Planning - Review test samples. Review documents. Agree testing dates.

3. Testing – Review samples in accordance with technical file, undertake performance and endurance tests, confirm results in accordance with acceptance criteria. Issue Test report.

6. Certificate - Admin activity. Our second stage check to ensure all the requirements have been properly met for the purposes of our accreditation.

Application

Test

Evaluate

Certificate
update

1. Establish Requirements

- a. product range (inc. similarities and differences);
- b. Establish manufacturing process (inc. company structure, effective employees) to provide a **commercial offer**

4. Evaluation - Check applicant Technical file. Verify the test program has been undertaken in full and all non-conformities have been addressed

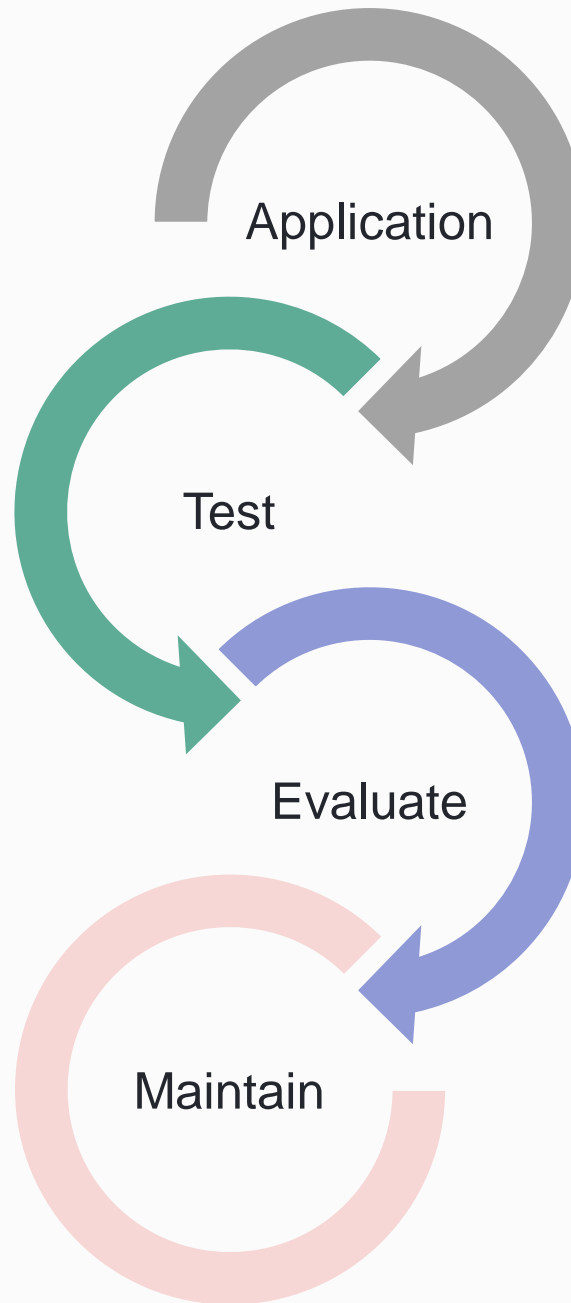
5. Draft certificate – We send you a draft to agree the wording on your certificate



New Process overview

- 2. Planning** - Review test samples. Review documents. Agree testing dates.
- 3. Testing** – Review samples in accordance with technical file, undertake performance and endurance tests, confirm results in accordance with acceptance criteria. Issue Test report.

- 7. Surveillance test** - Check the sample continues to perform in accordance with the requirements of the standard.
- 8. Surveillance audit** - Check the product and QS remain compliant and consistent to certification requirements



- 1. Establish Requirements**
 - a. product range (inc. similarities and differences);
 - b. Establish manufacturing process (inc. company structure, effective employees) to provide a **commercial offer**

- 4. Initial Audit** - Check effectiveness of documented quality system to consistently produce compliant product. Issue an assessment report.
- 5. Evaluation** - Check applicant Technical file. Verify the test program has been undertaken in full and all non-conformities have been addressed
- 6. Certificate** - Admin activity. Our second stage check to ensure all the requirements have been properly met for the purposes of our accreditation.



Changing a manufacturing location

2. Planning - Review test samples. Review documents. Agree testing dates if necessary.

3. Testing – Review samples in accordance with technical file, undertake performance and endurance tests, confirm results in accordance with acceptance criteria. Issue Test report.

7. Surveillance test - Check the sample continues to perform in accordance with the requirements of the standard.

8. Surveillance audit - Check the product and QS remain compliant and consistent to certification requirements

Application

Test
(if necessary)

Evaluate

Maintain

1. Establish Requirements

- a. product range involved or affected
- b. Establish manufacturing process (inc. company structure, effective employees) to provide a **commercial offer**

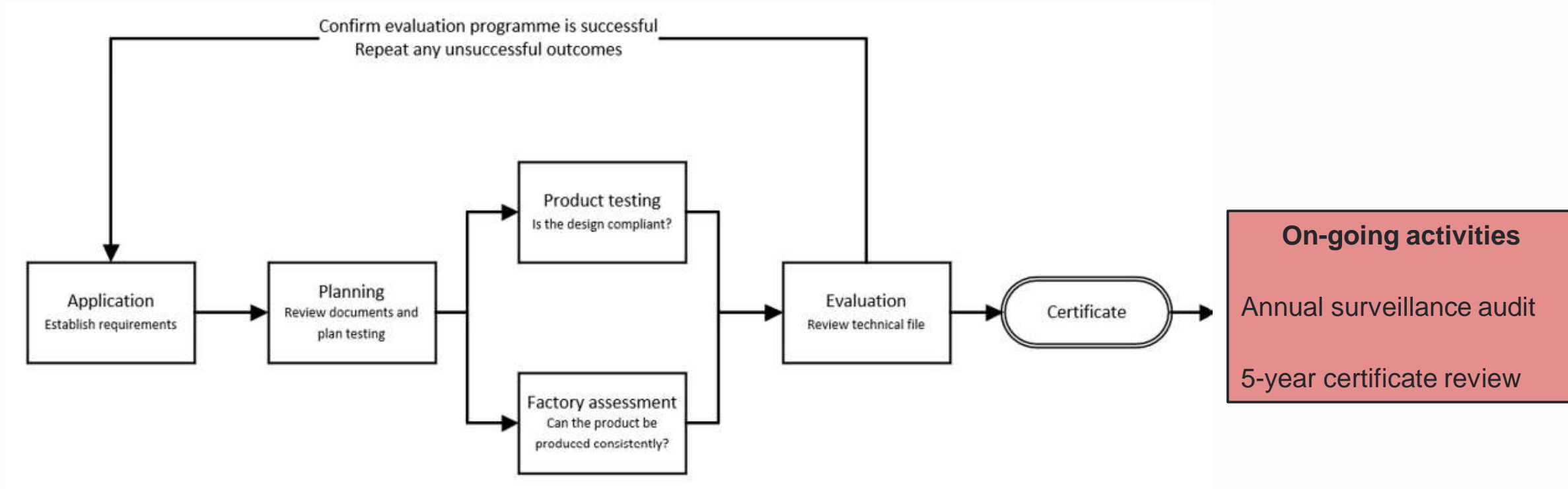
4. Initial Audit - Check effectiveness of documented quality system to consistently produce compliant product. Issue an assessment report.

5. Evaluation - Check applicant Technical file. Verify the test program has been undertaken in full and all non-conformities have been addressed

6. Certificate - Admin activity. Our second stage check to ensure all the requirements have been properly met for the purposes of our accreditation.



Benchmark Certification scheme overview



Benchmark ongoing activities



The ongoing activities involved in maintaining your Benchmark certificate are

Annual Assessment visits

Delivered locally

Reduced assessment cost

Looking to combine with other BSI certifications

Will involve a head office at least once in 5 years and a visit to all manufacturing sites (ISO 17065 requirement)

Five year certificate reviews

Ensure technical documentation and the certificate consistently meets ISO 17065 requirements

Ensure there are no outstanding non-conformities from factory or head office assessments and audit durations are correct

Make sure any certification is issued to the latest standard

Help **you** show **your** due diligence

Activities conducted on an assessment

Some of the items covered are;

Operational System or Quality Plan
Manufacturing Organisation Chart
and Job Descriptions

Supplier Evaluation
Customer Supply

Manufacturing and Inspection
Process
Identification and Traceability

Document Control & Record Keeping
Purchasing

Critical Components
Specifications
Labelling

Inspection / Testing and Calibration
Final Product Release

bsi.

PF1997
Checklist for Benchmark audit
Revision 2 (May 2024)

Assessors and Technical Experts should complete all of the boxes, and include the checklist to the a-report and **must** ensure that it is then uploaded against the relevant SMO into Poshglobal. The boxes should refer to the page number of the Audit Report or Assessment Detail which contain the relevant information and the non-conformity (if one is to be raised).

Visit SMO number: Visit date:

Questions to be considered	Report Page No.
1. Operational System or Quality Plan a) Is the manufacturing facility ISO 9001 accredited? Please provide details. b) If the manufacturing facility is not ISO 9001 accredited, do they have a documented system operating in accordance with ISO 9001? Please provide details. c) Does the manufacturing facility have a documented quality plan? d) Have there been any changes to the system or plan in the past 12 months affecting Product Certification requirements?	
2. Manufacturing Organisation Chart and Job Descriptions a) Is there a documented organisation chart, which reflects operational staff positions? b) Are position descriptions available for positions on the organisational chart that affect product certification? c) Does the job description nominate the person(s) responsible for the release of certified products?	
3. Document Control a) Does the manufacturing facility have a process describing how all documents (paper-based and electronic) are controlled to ensure only the most current and authorised versions are available to relevant staff? b) Does the procedure include methods of ensuring obsolete documents are removed from use? c) Is there a list of all the documents included in process? d) Does the manufacturing facility have access to and control external documents or references required to conform to Product Certification requirements?	
4. Record Keeping a) Has the manufacturing facility maintained records to provide evidence the product is manufactured in accordance with relevant standard/s to which it is certified? b) Are records identifiable to the product, standard testing and release of product? c) Are records (including electronic records) stored and retained in such a way that they are readily retrievable and in an environment that will prevent damage, deterioration, or loss? d) Are records as listed in the Benchmark Product Certification: Criteria retained for a minimum period of 10 years?	
5. Purchasing a) Has the manufacturing facility ensured that material and components conform to specific standard requirements for compliance to the standard(s)? b) Does the purchasing information describe the product to be purchased including where appropriate: <ul style="list-style-type: none">• The type, class, grade or other information• Purchase order number and date• The title or identification method• Specifications, drawings, process requirements, inspection instructions and other relevant technical data c) Is evidence of compliance provided with the material(s) and/or component(s)? (State evidence below)	

Page 1 of 5



BSI Benchmark technical documentation

bsi Your partner in progress

PF3009
Benchmark Application Form
Revision 1 (October 2025)

This application form is for Benchmark certification in Australia and/or New Zealand.

1. Applicant (Certificate Holder) Details

Registered company name/legal entity applying for certification.

Authorized Contact Details:

Company Name	ABN (Australian Company Only)
Address to Appear on Certificate	
Name	Company Position/Title
Telephone	E-mail
Authorized Representative	Other (please specify):

2. Manufacturer Details (List all applicable. Write 'AS ABOVE' if same as Applicant)

Details of the manufacturer (company / legal entity), if different from Certificate Holder.

Authorized Contact Details:

Company Name	ABN (Australian Company Only)
Physical Address	Company Position/Title
Name	Email
Phone No.	

3. Scope of Certification

Type of Certification	New Certificate	Product/standard modification (Extension to Scope/ Schedule Update)	Product addition (ETS/ Schedule Update)
Previous/existing certification			
Product Type	PPE Fire Construction Plumbing		
Standards			
To your knowledge, have any of the Product's you are seeking certification for, been rejected by a Conformity Assessment Body (CAB)?	YES	NO	
Does the product or its component parts have other types of certification, e.g. CE/UKCA?	YES	NO	

4. For transfer to BSI only

Details of existing certification

Certification body	Accreditation body:
Certificate number	Certificate expiry date
Reasons to transfer	
Last audit date by previous CB:	
Are there any outstanding non-compliance	

The contents of this document are confidential to BSI Group
The definitive version of this document is only available through the BSI SMS

Page 1 of 3

bsi.

PF1948
Benchmark Technical File Content
Revision 1 (August 2023)

BENCHMARK TECHNICAL FILE CHECKLIST

Guide for clients

The items below are those which BSI suggest a manufacturer should include in a technical file compiled under the Benchmark Scheme. Note that this checklist is for guidance only and is not intended to be exhaustive. Each technical file will be examined on its own merits against the requirements of the Scheme.

The 'manufacturer' should maintain an exact copy of the File as their reference document.

Note: When a product or manufacturing procedure is modified all documents within the File affected by the change must be updated and submitted to BSI for review.

1	Contents	
2	Revision History	
3	Product Description	
4	Drawings	
5	List of Components	
6	Test Reports	
7	Quality Plan	

Page 1 of 2




Benchmark Application form

PF3009

Covers all we need to know about your application and what we need to do, such as;

- Certificate holders address
- Manufacturing location
- Model names and types
- Standards
- Management standards in place



Your partner
in progress

PF3009
Benchmark Application Form
Revision 1 (October 2025)

This application form is for benchmark certification in Australia and/or New Zealand.

1. Applicant (Certificate Holder) Details

Registered company name/legal entity applying for certification.	Company Name	ABN (Australian Company Only)
	Address to Appear on Certificate	
Authorized Contact Details	Name	Company Position/Title
	Telephone	E-mail
	Authorized Representative	Other (please specify):

2. Manufacturer Details (List all applicable. Write 'AS ABOVE' if same as Applicant)

Details of the manufacturer (company / legal entity), if different from Certificate Holder.	Company Name	ABN (Australian Company Only)
	Physical Address	
Authorized Contact Details	Name	Company Position/Title
	Phone No.	Email

3. Scope of Certification

Type of Certification	New Certificate	Product/standard modification (Extension to Scope/ Schedule Update)	Product addition (ETS/ Schedule Update)
Previous/existing certificates			
Product Type	PPE	Fire	Construction
Standards			
To your knowledge, have any of the products you are seeking certification for, been rejected by a Conformity Assessment Body (CAB)?			
YES			
NO			
Does the product or its component parts have other types of certification, e.g. CE/UKCA?			
YES			
NO			

4. For transfer to BSI only

Details of existing certification	Certification body	Accreditation body:
	Certificate number	Certificate expiry date
Reasons to transfer		
Audit Details	Last audit date by previous CB:	
	Are there any outstanding non-compliance	

The contents of this document are confidential to BSI Group.
The definitive version of this document is only available through the BSI BMS

Page 1 of 3

Benchmark Technical Files



PF1948 and specifies what is needed in a Benchmark Technical File

1	Contents
	A list detailing all contents of the technical file.
2	Revision history
	This should be updated each time an amendment to the Technical File is made.
3	Product Description
	A complete description of the product/model and of its intended use
4	Drawings
	Design and manufacturing drawings and/or schematics of the product and of its components, sub-assemblies and circuits, as applicable.

5	List of Components
	Complete BOM (bill of materials) for the product and grade/type of materials used.
6	Test Reports
	Copies of test reports demonstrating compliance with the standard, technical specification ensuring that all materials and variants have been covered. Test Reports should come from an ISO 17025 accredited Test House, no older than 5 years.
7	Quality Plan
	<p>The Quality Plan should include detailed description of the means used by the manufacturer during the production of the device to ensure the conformity of the device produced with the design specifications, as a minimum shall include:</p> <ul style="list-style-type: none">• Detail of the manufacturing process stages, the in-process and final tests and inspections;• Limits of acceptance and rejection criteria;• Status of the QMS system in place (ISO 9001/ISO 13485).

Benchmark Technical Files



PF1948 and specifies what is needed in a Benchmark Technical File

8	Marking
	<p>A copy of the actual product marking covering the following:</p> <ul style="list-style-type: none">• Requirements of relative product standard• Description of how the required product marking is to be affixed to the device• BSI's Benchmark certification Mark, as per guide GP045 document: <p>BSI's Benchmark Product Certification Mark shall be applied directly to the Certified Product by stamping, printing or etching, labelling. The Product Certification Mark shall also be applied to the Certified Product packaging, information sheet or advertising materials.</p>
	Contains Mark of Trust guidelines

9	User Information
	<p>A copy of the manufacturers information notice must be supplied in the English Language as well as in the language of the countries of destination. The following items must be included as a minimum as well as any requirements of the relevant product standard:</p> <p>(a) instructions for storage, use, cleaning, maintenance, servicing and disinfection. Cleaning, maintenance or disinfectant products recommended by manufacturers must have no adverse effect on the PPE or the user when applied in accordance with the relevant instructions;</p> <p>(b) performance as recorded during relevant technical tests to reflect the levels or classes of protection provided by the device;</p> <p>(c) where applicable, accessories that may be used with the device and the characteristics of appropriate spare parts;</p> <p>(d) where applicable, the classes of protection appropriate to different levels of risk and the corresponding limits of use;</p> <p>(e) references to the relevant standard(s), or references to the other technical specifications used;</p> <p>(f) the name, address of the manufacturer;</p> <p>(g) BSI details including address (Benchmark Certification markings).</p>



Customer Portal

Findings

Filter: From To Location Standard Certificate

04 Major 47 Minor 20 Opportunities for improvement 37 Observations

Report Date	Report Title	Findings	Assessment Number	Report Number	Certificate	Location	Standard	Client	Status
2020/04/16	BSI 676453	1	1188008	1188008	BSI 676453	Demonstration-0047647875-000, London	ISO 27001	BSI	Completed
2020/04/16	BSI 676453	1	1188008	1188008	BSI 676453	Demonstration-0047647875-000, London	ISO 27001	BSI	Completed
2020/04/16	BSI 676453	1	1188008	1188008	BSI 676453	Demonstration-0047647875-000, London	ISO 27001	BSI	Completed
2020/04/16	BSI 676453	1	1188008	1188008	BSI 676453	Demonstration-0047647875-000, London	ISO 27001	BSI	Completed
2020/04/16	BSI 676453	1	1188008	1188008	BSI 676453	Demonstration-0047647875-000, London	ISO 27001	BSI	Completed
2020/04/16	BSI 676453	1	1188008	1188008	BSI 676453	Demonstration-0047647875-000, London	ISO 27001	BSI	Completed
2020/04/16	BSI 676453	1	1188008	1188008	BSI 676453	Demonstration-0047647875-000, London	ISO 27001	BSI	Completed
2020/04/16	BSI 676453	1	1188008	1188008	BSI 676453	Demonstration-0047647875-000, London	ISO 27001	BSI	Completed
2020/04/16	BSI 676453	1	1188008	1188008	BSI 676453	Demonstration-0047647875-000, London	ISO 27001	BSI	Completed
2020/04/16	BSI 676453	1	1188008	1188008	BSI 676453	Demonstration-0047647875-000, London	ISO 27001	BSI	Completed

Certificates & Certification Marks

Filter: From To Location Standard Certificate

0 Awaiting Assessment 0 Awaiting CAP 2 Awaiting Issue 8 Issued

Report Date	Report Title	Findings	Assessment Number	Report Number	Certificate	Location	Standard	Client	Status
2020/04/16	BSI 676453	1	1188008	1188008	BSI 676453	Demonstration-0047647875-000, London	ISO 27001	BSI	Completed
2020/04/16	BSI 676453	1	1188008	1188008	BSI 676453	Demonstration-0047647875-000, London	ISO 27001	BSI	Completed
2020/04/16	BSI 676453	1	1188008	1188008	BSI 676453	Demonstration-0047647875-000, London	ISO 27001	BSI	Completed
2020/04/16	BSI 676453	1	1188008	1188008	BSI 676453	Demonstration-0047647875-000, London	ISO 27001	BSI	Completed
2020/04/16	BSI 676453	1	1188008	1188008	BSI 676453	Demonstration-0047647875-000, London	ISO 27001	BSI	Completed
2020/04/16	BSI 676453	1	1188008	1188008	BSI 676453	Demonstration-0047647875-000, London	ISO 27001	BSI	Completed
2020/04/16	BSI 676453	1	1188008	1188008	BSI 676453	Demonstration-0047647875-000, London	ISO 27001	BSI	Completed
2020/04/16	BSI 676453	1	1188008	1188008	BSI 676453	Demonstration-0047647875-000, London	ISO 27001	BSI	Completed
2020/04/16	BSI 676453	1	1188008	1188008	BSI 676453	Demonstration-0047647875-000, London	ISO 27001	BSI	Completed
2020/04/16	BSI 676453	1	1188008	1188008	BSI 676453	Demonstration-0047647875-000, London	ISO 27001	BSI	Completed

Reports

Filter: From To Location Standard Certificate

Assessment Report Number	Standard	Location	Assessment Number	Assessment Start Date	Visit Type	Download
1188008	ISO 27001	Demonstration-0047647875-000, London	1188008	2020/04/16	Continuing Assessment	Download
1187028	ISO 22301	Demonstration-0047647875-000, Herndon	1187028	2019/10/16	Continuing Assessment	Download

Certificates & Certification Marks

Filter: From To Location Standard Certificate

0 Awaiting Assessment 0 Awaiting CAP 2 Awaiting Issue 8 Issued

Standard	Certificate	Location	Download Letter of Intent	Download Letter of Confirmation
ISO 14001	EMS 676453	Demonstration-0047647875-000, London	Download Letter of Intent	Download Letter of Confirmation
CHS 18001/ISO 45001	CHS 676454	Demonstration-0047647875-000, London	Download Letter of Intent	Download Letter of Confirmation

Using BSI Certification Marks

Promote Your Commitment To Excellence

Tell your customers about your commitment to achieving and maintaining excellence by using BSI certification marks. BSI certification marks are internationally recognised and represent quality, reliability and continual improvement. BSI certification marks are valuable marketing tools that you can use to promote your certification, offering your organisation a competitive advantage. You can download the certification marks you are eligible to use under each certificate listed.

For full details on using BSI Certification Marks please review the relevant information below.

[How to use the BSI Mark of Trust](#)

Pricing changes

Rather than load the assessment price, we are using a costing model like our other schemes. We are charging local day rates for assessments and specific certificate updates individually

Old process

All fees loaded against the annual assessment

New process

Fixed costs

Annual Management Fee to maintain the licence

Assessment fees charged at local day rate

Variable costs

Adding new products or sites are quoted and charged on a 'project'



“
Thank you

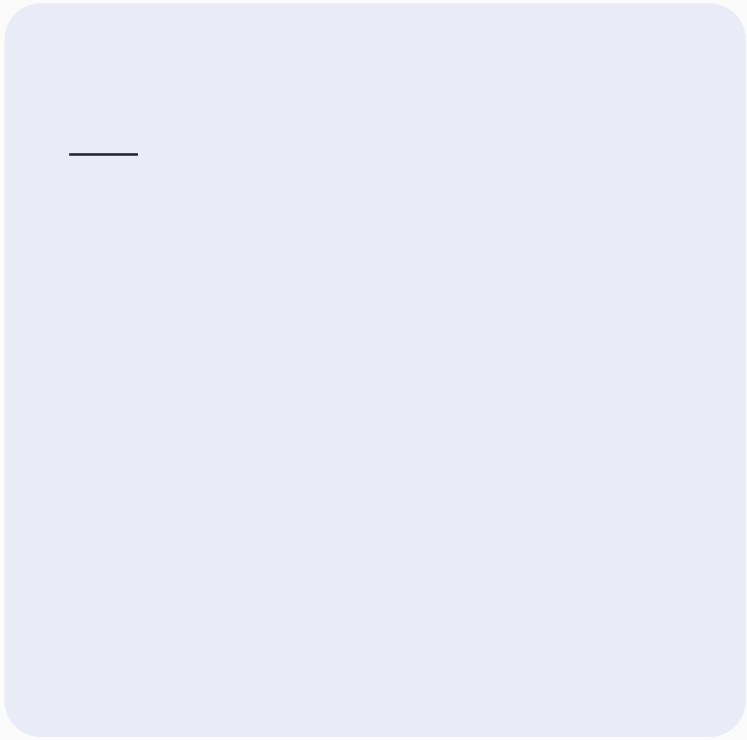


Technical File

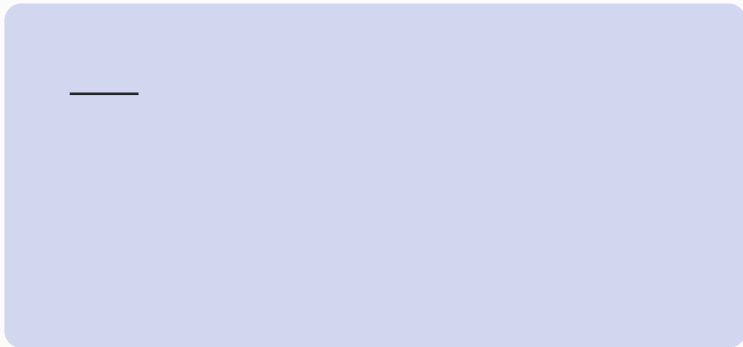
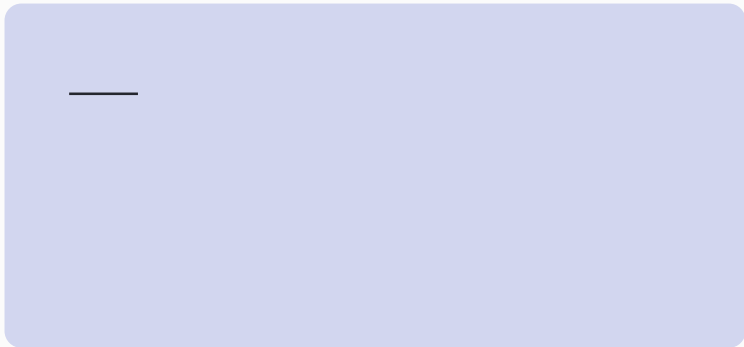


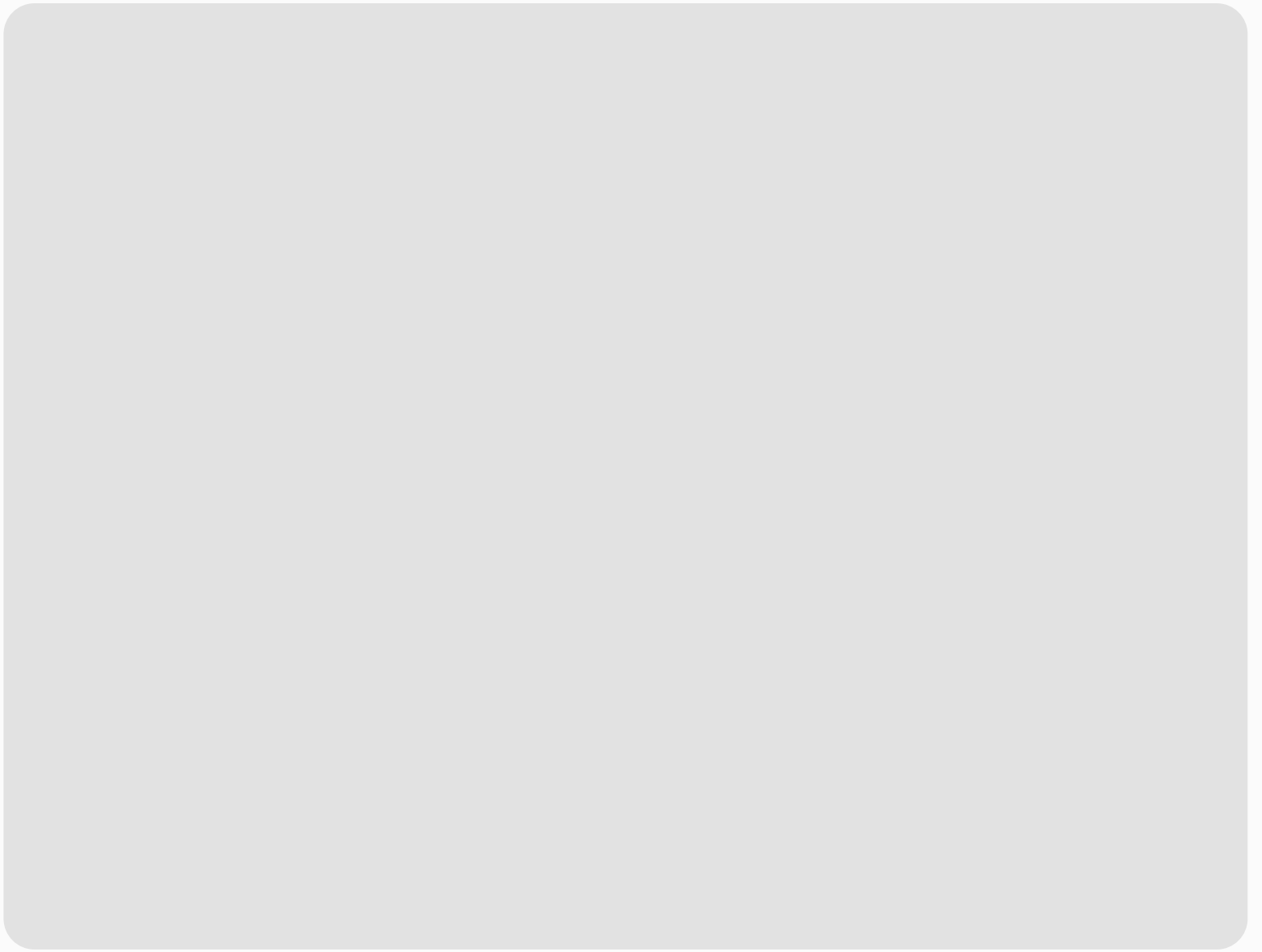
—



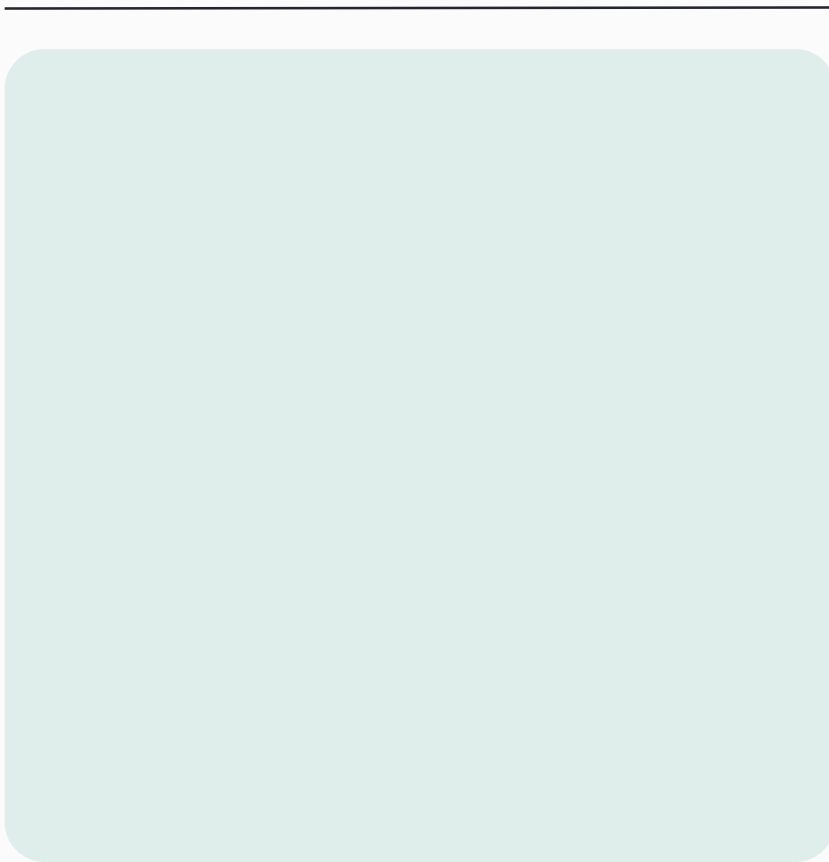
















“









BSI Group

The Acre, 90 Long Acre, London

WC2E 9RA United Kingdom

bsigroup.com

