

Date: 24 October 2024

Public Notification: RSPO Initial Certification MS B Audit of Perkumpulan Tani Maju Badang Sepakat (RSPO Membership: 1-0492-24-000-00)

Dear Stakeholders.

This is to inform that Perkumpulan Tani Maju Badang Sepakat, with RSPO membership number (1-0492-24-000-00) had appointed BSI Services Malaysia Sdn Bhd (“BSI Malaysia”) to conduct the Initial Certification (Eligibility, MSA, MSB) Audit located in Jambi Province. The audit will be conducted from 2-7 December 2024 against the requirements of RSPO ISH 2019 – Indonesian National Interpretation 2022. The supply chain model is Identity Preserved.

RSPO PO ID number of the Perkumpulan Tani Maju Badang Sepakat is: RSPO_PO1000017571.

Organization background: Perkumpulan Tani Maju Badang Sepakat has attained RSPO membership since 27 August 2024. Perkumpulan Tani Maju Badang Sepakat is an independent smallholder comprise of 210 smallholder members, managing oil palm plantation 338.04 Ha located in Badang Sepakat Village, Tungkal Ulu District, Tanjung Jabung Barat Regency, Jambi Province, Indonesia. Perkumpulan Tani Maju Badang Sepakat committed to manage sustainable oil palm plantation through RSPO certification in the future. Through Perkumpulan Tani Maju Badang Sepakat, the smallholder member encouraged to implement best management practices in managing oil palm plantation and provide training services and conduct partnership to support fair pricing for oil palm smallholder and better welfare for its smallholder member.

1. The information of the production data to be assessed are as follows:

Perkumpulan Tani Maju Badang Sepakat and its supply base		
Independent Smallholder Group Name	Perkumpulan Tani Maju Badang Sepakat	
Smallholder number	210 smallholder members with 282 land parcels	
Address / Location	Badang Sepakat Village, Tungkal Ulu District, Tanjung Jabung Barat Regency, Jambi Province, Indonesia	
GPS Reference (in degree. minute & second)	Latitude	1° 12' 8.00" N
	Longitude	103° 2' 19.00" E
Forecast Annual Output (MT)	CPO	1,342.88 MT
	PK	335.72 MT
	FFB	6,714.42 MT

2. The Supply Base / Estates details are as follows:



No	No	Nama Petani	Lokasi	Titik Koordinat		Ringkasan Data Area (Ha)		Perkiraan Produksi TBS Tahunan (MT)	Status Liability (L/NL)	Tanggal Bergabung
				Latitude / Garis lintang	Longitude / Garis bujur	Total Area yang Disertifikasi	Area Tertanam			
1	1	Adnan Adi Purnama	Tanjung Tayas Village, Tungkal Ulu District	1° 12' 41.746" S	103° 2' 35.888" E	1.58	1.58	30.96	NL	26-Feb-22
2	2	Agus Hariyanto	Tanjung Tayas Village, Tungkal Ulu District	1° 12' 40.269" S	103° 5' 57.318" E	0.75	0.75	14.52	NL	15-Oct-23
3	3	Agus Miswanto	Tanjung Tayas Village, Tungkal Ulu District	1° 11' 59.007" S	103° 5' 17.475" E	0.99	0.99	18.49	NL	01-Aug-22
4	4	Ahmad Toyib	Tanjung Tayas Village, Tungkal Ulu District	1° 12' 44.110" S	103° 4' 46.910" E	1.94	1.94	38.93	NL	15-Oct-23
5	5	Aidin	Badang Sepakat Village, Tungkal Ulu District	1° 13' 4.575" S	103° 2' 48.714" E	1.00	1.00	21.39	NL	24-Jul-22
6	6	Ali Sudarto 1	Badang Sepakat Village, Tungkal Ulu District	1° 12' 3.374" S	103° 3' 2.388" E	1.00	1.00	20.24	NL	24-Jul-22
	7	Ali Sudarto 2	Badang Sepakat Village, Tungkal Ulu District	1° 11' 38.898" S	103° 3' 37.488" E	2.20	2.20	41.95	NL	07-Jul-22
7	8	Amandi	Tanjung Tayas Village, Tungkal Ulu District	1° 13' 0.892" S	103° 5' 18.623" E	0.25	0.25	4.48	NL	15-Oct-23
8	9	Amin Wastoni	Tanjung Tayas Village, Tungkal Ulu District	1° 12' 36.069" S	103° 6' 3.511" E	1.50	1.50	30.31	NL	15-Oct-23
9	10	Ana Yunita	Tanjung Tayas Village, Tungkal Ulu District	1° 12' 47.482" S	103° 4' 9.576" E	1.55	1.55	30.04	NL	15-Oct-23
10	11	Anang Rifai	Tanjung Tayas Village, Tungkal Ulu District	1° 12' 36.687" S	103° 4' 39.418" E	1.80	1.80	37.13	NL	15-Oct-23
11	12	Anton Sunarto	Tanjung Tayas Village, Tungkal Ulu District	1° 12' 40.095" S	103° 5' 50.914" E	1.01	1.01	18.67	NL	15-Oct-23
12	13	Antun Sunardi	Tanjung Tayas Village, Tungkal Ulu District	1° 12' 40.329" S	103° 5' 47.522" E	1.01	1.01	20.30	NL	15-Oct-23
13	14	Arif Fathoni	Tanjung Tayas Village, Tungkal Ulu District	1° 13' 9.772" S	103° 5' 47.067" E	1.00	1.00	21.17	NL	19-Aug-22
14	15	Asman	Badang Sepakat Village, Tungkal Ulu District	1° 12' 47.384" S	103° 3' 6.173" E	1.00	1.00	17.50	NL	26-Feb-22
15	16	Bambang	Tanjung Tayas Village, Tungkal Ulu District	1° 13' 9.529" S	103° 5' 12.304" E	0.75	0.75	13.63	NL	15-Oct-23
16	17	Bambang Kabiantoro	Tanjung Tayas Village, Tungkal Ulu District	1° 13' 16.036" S	103° 5' 30.347" E	1.00	1.00	20.24	NL	15-Oct-23
17	18	Bernando Sitorus	Tanjung Tayas Village, Tungkal Ulu District	1° 13' 3.706" S	103° 6' 1.320" E	9.00	9.00	185.94	NL	15-Oct-23
18	19	Bisroatno	Badang Sepakat Village, Tungkal Ulu District	1° 12' 30.617" S	103° 2' 27.491" E	0.25	0.25	4.97	NL	10-Aug-23
19	20	Bistiar Siregar	Tanjung Tayas Village, Tungkal Ulu District	1° 12' 12.773" S	103° 5' 37.954" E	0.75	0.75	15.66	NL	15-Oct-23
20	21	Budi Purwono	Tanjung Tayas Village, Tungkal Ulu District	1° 13' 15.087" S	103° 4' 33.888" E	1.07	1.07	20.49	NL	04-Aug-22
21	22	Darti	Badang Sepakat Village, Tungkal Ulu District	1° 12' 31.976" S	103° 2' 36.306" E	1.19	1.19	24.26	NL	01-Aug-22
22	23	Darwanto 1	Tanjung Tayas Village, Tungkal Ulu District	1° 12' 56.938" S	103° 5' 32.233" E	0.75	0.75	15.16	NL	15-Oct-23
	24	Darwanto 2	Tanjung Tayas Village, Tungkal Ulu District	1° 12' 56.122" S	103° 5' 34.194" E	0.75	0.75	15.16	NL	15-Oct-23
23	25	Deska Riawan	Tanjung Tayas Village, Tungkal Ulu District	1° 12' 57.261" S	103° 5' 38.205" E	1.50	1.50	31.33	NL	15-Oct-23
24	26	Djayus	Badang Sepakat Village, Tungkal Ulu District	1° 12' 48.221" S	103° 2' 53.334" E	1.29	1.29	25.36	NL	15-Aug-22
25	27	Duripyoso 1	Tanjung Tayas Village, Tungkal Ulu District	1° 12' 52.790" S	103° 6' 6.587" E	11.00	11.00	204.66	NL	15-Oct-23



No	No	Nama Petani	Lokasi	Titik Koordinat		Ringkasan Data Area (Ha)		Perkiraan Produksi TBS Tahunan (MT)	Status Liability (L/NL)	Tanggal Bergabung
				Latitude / Garis lintang	Longitude / Garis bujur	Total Area yang Disertifikasi	Area Tertanam			
	28	Duripyoso 2	Tanjung Tayas Village, Tungkal Ulu District	1° 12' 50.379" S	103° 5' 50.312" E	1.00	1.00	18.51	NL	15-Oct-23
26	29	Edi Amrizal	Tanjung Tayas Village, Tungkal Ulu District	1° 11' 52.388" S	103° 5' 19.090" E	0.88	0.88	16.80	NL	19-Aug-22
27	30	Eka Saputri	Badang Sepakat Village, Tungkal Ulu District	1° 11' 38.077" S	103° 3' 41.003" E	1.05	1.05	20.89	NL	04-Aug-23
28	31	Eni Fatmawati	Tanjung Tayas Village, Tungkal Ulu District	1° 12' 19.531" S	103° 5' 37.039" E	0.75	0.75	15.66	NL	15-Oct-23
29	32	Febriyono	Badang Sepakat Village, Tungkal Ulu District	1° 11' 36.359" S	103° 3' 14.898" E	1.70	1.70	35.24	NL	26-Feb-22
30	33	Feri Nurama	Tanjung Tayas Village, Tungkal Ulu District	1° 12' 35.870" S	103° 6' 11.947" E	10.00	10.00	193.27	NL	27-Sep-23
31	34	Garnadi	Badang Sepakat Village, Tungkal Ulu District	1° 12' 50.001" S	103° 2' 57.126" E	1.19	1.19	21.13	NL	24-Jul-22
32	35	Harmini	Tanjung Tayas Village, Tungkal Ulu District	1° 11' 57.036" S	103° 3' 52.263" E	0.55	0.55	11.81	NL	15-Oct-23
33	36	Harsito	Tanjung Tayas Village, Tungkal Ulu District	1° 11' 59.208" S	103° 3' 51.998" E	0.43	0.43	9.14	NL	15-Oct-23
34	37	Japar	Tanjung Tayas Village, Tungkal Ulu District	1° 12' 10.035" S	103° 5' 45.062" E	1.00	1.00	18.56	NL	15-Oct-23
35	38	Jihan Wan Aziz	Badang Sepakat Village, Tungkal Ulu District	1° 11' 37.820" S	103° 2' 53.321" E	0.25	0.25	4.93	NL	30-Sep-22
36	39	Joko Sunaryo	Badang Sepakat Village, Tungkal Ulu District	1° 13' 2.595" S	103° 5' 7.548" E	0.25	0.25	4.73	NL	15-Oct-23
37	40	Jumino 1	Badang Sepakat Village, Tungkal Ulu District	1° 11' 47.792" S	103° 1' 54.476" E	1.91	1.91	35.33	NL	19-Aug-22
	41	Jumino 2	Badang Sepakat Village, Tungkal Ulu District	1° 12' 32.492" S	103° 2' 23.611" E	1.00	1.00	18.51	NL	19-Aug-22
	42	Jumino 3	Badang Sepakat Village, Tungkal Ulu District	1° 12' 8.903" S	103° 2' 51.425" E	1.00	1.00	19.12	NL	19-Aug-22
	43	Jumino 4	Badang Sepakat Village, Tungkal Ulu District	1° 12' 32.041" S	103° 3' 26.210" E	1.20	1.20	23.29	NL	19-Aug-22
38	44	Junaidi	Badang Sepakat Village, Tungkal Ulu District	1° 11' 56.670" S	103° 2' 29.978" E	0.25	0.25	4.93	NL	19-Aug-22
39	45	Karsiem	Badang Sepakat Village, Tungkal Ulu District	1° 12' 16.269" S	103° 3' 5.768" E	0.40	0.40	7.91	NL	03-Jul-23
40	46	Kastoni	Tanjung Tayas Village, Tungkal Ulu District	1° 11' 37.432" S	103° 3' 52.067" E	2.00	2.00	40.08	NL	07-Jul-22
41	47	M Abdullah Kadir	Tanjung Tayas Village, Tungkal Ulu District	1° 12' 51.789" S	103° 5' 12.357" E	0.25	0.25	4.58	NL	15-Oct-23
42	48	M Neto	Badang Sepakat Village, Tungkal Ulu District	1° 12' 36.595" S	103° 2' 32.343" E	1.06	1.06	21.80	NL	30-Sep-22
43	49	M Suhlan	Tanjung Tayas Village, Tungkal Ulu District	1° 13' 16.833" S	103° 5' 59.353" E	1.01	1.01	18.63	NL	06-Oct-22
44	50	Marsini	Badang Sepakat Village, Tungkal Ulu District	1° 11' 51.522" S	103° 3' 17.816" E	0.46	0.46	9.07	NL	15-Aug-22
45	51	Marsiyah	Badang Sepakat Village, Tungkal Ulu District	1° 12' 23.484" S	103° 5' 15.781" E	0.75	0.75	15.66	NL	15-Oct-23
46	52	Maryoto	Badang Sepakat Village, Tungkal Ulu District	1° 13' 17.514" S	103° 4' 12.408" E	0.78	0.78	14.24	NL	15-Oct-23
47	53	Miskun	Tanjung Tayas Village, Tungkal Ulu District	1° 12' 46.277" S	103° 6' 10.925" E	6.00	6.00	120.23	NL	15-Oct-23
48	54	Mislam Kitang	Badang Sepakat Village, Tungkal Ulu District	1° 12' 13.061" S	103° 3' 3.594" E	1.75	1.75	36.21	NL	30-Sep-22



No	No	Nama Petani	Lokasi	Titik Koordinat		Ringkasan Data Area (Ha)		Perkiraan Produksi TBS Tahunan (MT)	Status Liability (L/NL)	Tanggal Bergabung
				Latitude / Garis lintang	Longitude / Garis bujur	Total Area yang Disertifikasi	Area Tertanam			
49	55	Mujiono	Tanjung Tayas Village, Tungkal Ulu District	1° 13' 17.255" S	103° 5' 36.745" E	1.00	1.00	21.57	NL	15-Oct-23
50	56	Muryani	Badang Sepakat Village, Tungkal Ulu District	1° 13' 0.245" S	103° 2' 41.995" E	0.99	0.99	20.30	NL	15-Aug-22
51	57	Muslih	Tanjung Tayas Village, Tungkal Ulu District	1° 11' 25.053" S	103° 4' 36.296" E	0.85	0.85	17.29	NL	28-Aug-22
52	58	Narno 1	Badang Sepakat Village, Tungkal Ulu District	1° 11' 50.892" S	103° 2' 45.525" E	1.23	1.23	25.12	NL	15-Aug-22
	59	Narno 2	Badang Sepakat Village, Tungkal Ulu District	1° 11' 53.780" S	103° 2' 43.967" E	1.09	1.09	22.25	NL	15-Aug-22
53	60	Nur Cholis	Tanjung Tayas Village, Tungkal Ulu District	1° 12' 29.555" S	103° 5' 34.684" E	0.75	0.75	15.66	NL	15-Oct-23
54	61	Nurman	Badang Sepakat Village, Tungkal Ulu District	1° 12' 35.031" S	103° 2' 51.111" E	1.80	1.80	36.17	NL	01-Aug-22
55	62	Praptomo 1	Tanjung Tayas Village, Tungkal Ulu District	1° 12' 42.583" S	103° 4' 34.558" E	1.10	1.10	20.37	NL	15-Oct-23
	63	Praptomo 2	Tanjung Tayas Village, Tungkal Ulu District	1° 12' 58.448" S	103° 4' 58.059" E	0.25	0.25	4.58	NL	15-Oct-23
56	64	Puji Astuti	Badang Sepakat Village, Tungkal Ulu District	1° 12' 6.954" S	103° 2' 34.881" E	0.29	0.29	5.68	NL	15-Oct-23
57	65	Rame	Tanjung Tayas Village, Tungkal Ulu District	1° 11' 34.915" S	103° 5' 4.468" E	1.06	1.06	21.76	NL	26-Dec-22
58	66	Raswan B	Badang Sepakat Village, Tungkal Ulu District	1° 11' 41.428" S	103° 3' 43.502" E	0.96	0.96	19.78	NL	05-Jan-23
59	67	Ratmi 1	Badang Sepakat Village, Tungkal Ulu District	1° 12' 37.465" S	103° 2' 48.727" E	0.64	0.64	11.43	NL	19-Aug-22
	68	Ratmi 2	Badang Sepakat Village, Tungkal Ulu District	1° 11' 42.766" S	103° 1' 56.915" E	1.67	1.67	31.52	NL	19-Aug-22
60	69	Reni Agustin	Tanjung Tayas Village, Tungkal Ulu District	1° 11' 37.566" S	103° 5' 18.768" E	2.00	2.00	38.04	NL	10-Oct-22
61	70	Rina Lili Susanti	Tanjung Tayas Village, Tungkal Ulu District	1° 11' 32.145" S	103° 4' 38.177" E	1.10	1.10	20.47	NL	19-Aug-22
62	71	Safitri	Badang Sepakat Village, Tungkal Ulu District	1° 12' 0.577" S	103° 2' 27.951" E	0.36	0.36	7.99	NL	30-Sep-23
63	72	Saiman	Badang Sepakat Village, Tungkal Ulu District	1° 12' 34.819" S	103° 2' 36.764" E	2.00	2.00	40.08	NL	01-Aug-22
64	73	Sakir Sapriadi	Tanjung Tayas Village, Tungkal Ulu District	1° 11' 24.169" S	103° 4' 40.062" E	2.00	2.00	40.59	NL	30-Sep-23
65	74	Sapto Hari Susanto	Tanjung Tayas Village, Tungkal Ulu District	1° 12' 6.609" S	103° 4' 41.453" E	0.68	0.68	13.48	NL	15-Oct-23
66	75	Sauji	Tanjung Tayas Village, Tungkal Ulu District	1° 12' 33.579" S	103° 4' 37.310" E	2.00	2.00	40.06	NL	15-Oct-23
67	76	Sawiyono	Badang Sepakat Village, Tungkal Ulu District	1° 12' 18.680" S	103° 2' 44.973" E	0.75	0.75	15.61	NL	19-Aug-22
68	77	Sawon	Tanjung Tayas Village, Tungkal Ulu District	1° 11' 36.610" S	103° 5' 9.127" E	1.90	1.90	38.12	NL	04-Aug-22
69	78	Senam 1	Badang Sepakat Village, Tungkal Ulu District	1° 12' 50.435" S	103° 2' 59.266" E	1.50	1.50	30.37	NL	15-Aug-22
	79	Senam 2	Badang Sepakat Village, Tungkal Ulu District	1° 12' 43.090" S	103° 2' 51.570" E	1.29	1.29	27.15	NL	15-Aug-22
70	80	Septia Wulansari	Badang Sepakat Village, Tungkal Ulu District	1° 12' 50.225" S	103° 2' 39.914" E	0.82	0.82	18.08	NL	15-Aug-22
71	81	Setiyono	Badang Sepakat Village, Tungkal Ulu District	1° 12' 51.028" S	103° 2' 46.201" E	1.44	1.44	29.14	NL	05-Jan-23



No	No	Nama Petani	Lokasi	Titik Koordinat		Ringkasan Data Area (Ha)		Perkiraan Produksi TBS Tahunan (MT)	Status Liability (L/NL)	Tanggal Bergabung
				Latitude / Garis lintang	Longitude / Garis bujur	Total Area yang Disertifikasi	Area Tertanam			
72	82	Siswanto	Badang Sepakat Village, Tungkal Ulu District	1° 11' 43.311" S	103° 3' 36.854" E	1.00	1.00	18.51	NL	07-Jul-22
73	83	Siti Marliya	Badang Sepakat Village, Tungkal Ulu District	1° 11' 56.651" S	103° 2' 34.766" E	0.25	0.25	5.21	NL	05-Jan-23
74	84	Sri Lastuti	Tanjung Tayas Village, Tungkal Ulu District	1° 12' 37.143" S	103° 6' 0.326" E	1.02	1.02	19.52	NL	15-Oct-23
75	85	Subiantoro	Badang Sepakat Village, Tungkal Ulu District	1° 12' 37.928" S	103° 2' 37.296" E	2.00	2.00	38.04	NL	15-Aug-22
76	86	Suesti Ningsih	Badang Sepakat Village, Tungkal Ulu District	1° 11' 56.664" S	103° 2' 23.515" E	0.25	0.25	4.98	NL	04-Aug-22
77	87	Sugianto 1	Tanjung Tayas Village, Tungkal Ulu District	1° 13' 13.894" S	103° 4' 56.572" E	1.96	1.96	38.58	NL	15-Oct-23
	88	Sugianto 2	Tanjung Tayas Village, Tungkal Ulu District	1° 12' 49.841" S	103° 5' 27.527" E	0.75	0.75	15.66	NL	15-Oct-23
78	89	Suharmanto	Tanjung Tayas Village, Tungkal Ulu District	1° 12' 29.725" S	103° 5' 26.199" E	1.50	1.50	30.31	NL	15-Oct-23
79	90	Sukidi	Tanjung Tayas Village, Tungkal Ulu District	1° 11' 39.961" S	103° 4' 55.673" E	1.11	1.11	20.70	NL	10-Oct-22
80	91	Sukirno	Tanjung Tayas Village, Tungkal Ulu District	1° 12' 50.657" S	103° 5' 19.075" E	0.25	0.25	4.98	NL	15-Oct-23
81	92	Sulam	Tanjung Tayas Village, Tungkal Ulu District	1° 12' 6.867" S	103° 5' 14.627" E	1.27	1.27	23.86	NL	15-Oct-23
82	93	Sulastri B	Tanjung Tayas Village, Tungkal Ulu District	1° 11' 35.979" S	103° 5' 1.363" E	1.96	1.96	37.24	NL	15-Oct-23
83	94	Sulistiyono	Tanjung Tayas Village, Tungkal Ulu District	1° 12' 16.323" S	103° 5' 43.630" E	1.01	1.01	18.75	NL	15-Oct-23
84	95	Sumini	Badang Sepakat Village, Tungkal Ulu District	1° 12' 57.303" S	103° 2' 12.262" E	1.50	1.50	30.31	NL	19-Aug-22
85	96	Sunarto B	Tanjung Tayas Village, Tungkal Ulu District	1° 11' 29.578" S	103° 4' 58.115" E	0.75	0.75	15.58	NL	07-Jul-22
86	97	Sunaryo	Tanjung Tayas Village, Tungkal Ulu District	1° 13' 10.042" S	103° 5' 52.762" E	1.00	1.00	18.51	NL	15-Oct-23
87	98	Sunyoto	Tanjung Tayas Village, Tungkal Ulu District	1° 11' 53.662" S	103° 5' 30.474" E	1.58	1.58	32.81	NL	20-Aug-22
88	99	Suripto	Tanjung Tayas Village, Tungkal Ulu District	1° 12' 9.703" S	103° 5' 41.961" E	1.00	1.00	18.52	NL	15-Oct-23
89	100	Suswati	Badang Sepakat Village, Tungkal Ulu District	1° 11' 47.179" S	103° 3' 16.234" E	1.00	1.00	19.23	NL	20-Aug-22
90	101	Suwardi A	Badang Sepakat Village, Tungkal Ulu District	1° 12' 2.487" S	103° 3' 16.179" E	2.00	2.00	39.57	NL	24-Aug-22
91	102	Suwardi B 1	Tanjung Tayas Village, Tungkal Ulu District	1° 12' 10.343" S	103° 5' 48.164" E	1.01	1.01	18.75	NL	15-Oct-23
	103	Suwardi B 2	Tanjung Tayas Village, Tungkal Ulu District	1° 12' 31.967" S	103° 6' 7.360" E	1.30	1.30	27.42	NL	15-Oct-23
92	104	Suyanto A	Badang Sepakat Village, Tungkal Ulu District	1° 11' 43.952" S	103° 3' 20.737" E	1.00	1.00	19.84	NL	15-Aug-22
93	105	Suyanto B	Tanjung Tayas Village, Tungkal Ulu District	1° 12' 49.869" S	103° 5' 25.095" E	0.75	0.75	16.17	NL	15-Oct-23
94	106	Suyitno	Tanjung Tayas Village, Tungkal Ulu District	1° 12' 56.806" S	103° 5' 29.865" E	0.75	0.75	15.16	NL	15-Oct-23
95	107	Tasmiyah	Badang Sepakat Village, Tungkal Ulu District	1° 13' 0.092" S	103° 5' 29.598" E	0.75	0.75	15.05	NL	15-Oct-23
96	108	Taupik Suprianto	Badang Sepakat Village, Tungkal Ulu District	1° 11' 46.088" S	103° 3' 29.605" E	0.80	0.80	16.17	NL	15-Aug-22



No	No	Nama Petani	Lokasi	Titik Koordinat		Ringkasan Data Area (Ha)		Perkiraan Produksi TBS Tahunan (MT)	Status Liability (L/NL)	Tanggal Bergabung
				Latitude / Garis lintang	Longitude / Garis bujur	Total Area yang Disertifikasi	Area Tertanam			
97	109	Topan	Badang Sepakat Village, Tungkal Ulu District	1° 12' 56.799" S	103° 5' 9.224" E	1.00	1.00	18.51	NL	15-Oct-23
98	110	Tri Juana	Tanjung Tayas Village, Tungkal Ulu District	1° 12' 36.922" S	103° 5' 50.962" E	1.00	1.00	20.14	NL	15-Oct-23
99	111	Umi Sa'Adiah	Tanjung Tayas Village, Tungkal Ulu District	1° 12' 29.920" S	103° 5' 41.407" E	2.50	2.50	49.64	NL	15-Oct-23
100	112	Waginem 1	Badang Sepakat Village, Tungkal Ulu District	1° 12' 9.915" S	103° 2' 16.504" E	0.25	0.25	4.95	NL	07-Jul-22
	113	Waginem 2	Badang Sepakat Village, Tungkal Ulu District	1° 12' 6.403" S	103° 2' 18.977" E	0.25	0.25	4.58	NL	07-Jul-22
101	114	Waluyo 1	Tanjung Tayas Village, Tungkal Ulu District	1° 13' 13.642" S	103° 5' 5.661" E	1.02	1.02	19.51	NL	15-Oct-23
	115	Waluyo 2	Tanjung Tayas Village, Tungkal Ulu District	1° 13' 11.002" S	103° 5' 3.926" E	0.25	0.25	4.98	NL	15-Oct-23
	116	Waluyo 3	Tanjung Tayas Village, Tungkal Ulu District	1° 12' 41.311" S	103° 5' 5.814" E	0.27	0.27	5.48	NL	15-Oct-23
	117	Waluyo 4	Tanjung Tayas Village, Tungkal Ulu District	1° 12' 44.645" S	103° 5' 5.785" E	0.27	0.27	5.33	NL	15-Oct-23
	118	Waluyo 5	Tanjung Tayas Village, Tungkal Ulu District	1° 12' 44.736" S	103° 5' 6.640" E	0.27	0.27	5.68	NL	15-Oct-23
	119	Waluyo 6	Tanjung Tayas Village, Tungkal Ulu District	1° 12' 26.614" S	103° 5' 8.617" E	0.75	0.75	15.66	NL	15-Oct-23
102	120	Wardi 1	Badang Sepakat Village, Tungkal Ulu District	1° 12' 25.311" S	103° 3' 0.789" E	0.87	0.87	18.10	NL	25-Aug-22
	121	Wardi 2	Tanjung Tayas Village, Tungkal Ulu District	1° 12' 44.134" S	103° 4' 32.323" E	1.04	1.04	19.26	NL	24-Aug-22
	122	Wardi 3	Badang Sepakat Village, Tungkal Ulu District	1° 12' 17.449" S	103° 3' 4.234" E	0.75	0.75	15.61	NL	24-Aug-22
	123	Wardi 4	Badang Sepakat Village, Tungkal Ulu District	1° 12' 20.779" S	103° 3' 1.019" E	2.00	2.00	40.08	NL	24-Aug-22
	124	Wardi 5	Tanjung Tayas Village, Tungkal Ulu District	1° 12' 16.866" S	103° 4' 20.452" E	1.96	1.96	39.28	NL	24-Aug-22
103	125	Warsiti	Tanjung Tayas Village, Tungkal Ulu District	1° 12' 13.097" S	103° 5' 42.523" E	1.01	1.01	18.67	NL	15-Oct-23
104	126	Wasito	Tanjung Tayas Village, Tungkal Ulu District	1° 12' 57.111" S	103° 5' 1.931" E	3.00	3.00	59.61	NL	15-Oct-23
105	127	Winarsih	Badang Sepakat Village, Tungkal Ulu District	1° 13' 13.318" S	103° 5' 40.180" E	1.00	1.00	18.51	NL	15-Oct-23
106	128	Yeni Nurokhmah	Badang Sepakat Village, Tungkal Ulu District	1° 13' 1.776" S	103° 2' 39.139" E	1.30	1.30	26.41	NL	20-Aug-23
107	129	Yono Sukisro	Badang Sepakat Village, Tungkal Ulu District	1° 12' 0.327" S	103° 3' 32.990" E	0.45	0.45	7.81	NL	07-Jul-22
108	130	Yusuf Baaeqi 1	Badang Sepakat Village, Tungkal Ulu District	1° 11' 19.642" S	103° 1' 59.014" E	0.93	0.93	17.15	NL	19-Aug-22
	131	Yusuf Baaeqi 2	Badang Sepakat Village, Tungkal Ulu District	1° 11' 36.526" S	103° 1' 56.396" E	1.00	1.00	18.51	NL	19-Aug-22
	132	Yusuf Baaeqi 3	Badang Sepakat Village, Tungkal Ulu District	1° 12' 30.908" S	103° 2' 28.874" E	0.25	0.25	4.42	NL	19-Aug-22
109	133	Zuliatin	Badang Sepakat Village, Tungkal Ulu District	1° 11' 59.297" S	103° 3' 19.462" E	1.03	1.03	18.16	NL	07-Jul-22
110	134	Ali Mustofa	Badang Sepakat Village, Tungkal Ulu District	1° 12' 45.609" S	103° 2' 53.354" E	1.18	1.18	22.03	NL	25/07/2022
111	135	Andry Setiawan 1	Badang Sepakat Village, Tungkal Ulu District	1° 12' 46.105" S	103° 2' 33.197" E	2.00	2.00	40.08	NL	18/08/2023



No	No	Nama Petani	Lokasi	Titik Koordinat		Ringkasan Data Area (Ha)		Perkiraan Produksi TBS Tahunan (MT)	Status Liability (L/NL)	Tanggal Bergabung
				Latitude / Garis lintang	Longitude / Garis bujur	Total Area yang Disertifikasi	Area Tertanam			
	136	Andry Setiawan 2	Badang Sepakat Village, Tungkal Ulu District	1° 11' 47.808" S	103° 2' 29.488" E	0.29	0.29	5.13	NL	18/08/2023
112	137	Ania	Badang Sepakat Village, Tungkal Ulu District	1° 11' 58.608" S	103° 2' 44.630" E	0.24	0.24	4.17	NL	21/07/2023
113	138	Bambang Edi Sukatno	Badang Sepakat Village, Tungkal Ulu District	1° 12' 35.106" S	103° 2' 41.818" E	0.68	0.68	12.17	NL	19-Aug-22
114	139	Catur Adi Wibowo	Badang Sepakat Village, Tungkal Ulu District	1° 11' 45.932" S	103° 3' 34.191" E	0.93	0.93	19.11	NL	08-Jan-23
115	140	Dewi Restiani 1	Pematang Pauh Village, Tungkal Ulu District	1° 10' 15.715" S	103° 5' 4.653" E	0.67	0.67	14.10	NL	25-Jul-22
	141	Dewi Restiani 2	Pematang Pauh Village, Tungkal Ulu District	1° 10' 11.873" S	103° 5' 2.671" E	1.60	1.60	33.28	NL	25-Jul-22
116	142	Eka Setia Ningsih	Badang Sepakat Village, Tungkal Ulu District	1° 11' 33.608" S	103° 3' 36.077" E	1.05	1.05	22.62	NL	26/12/2022
117	143	Endang Purwaningsih	Badang Sepakat Village, Tungkal Ulu District	1° 12' 7.942" S	103° 2' 34.911" E	0.26	0.26	4.98	NL	01-Aug-22
118	144	Endra Susanto	Badang Sepakat Village, Tungkal Ulu District	1° 11' 42.102" S	103° 2' 37.064" E	0.70	0.70	14.69	NL	08-Jan-23
119	145	Hartini	Badang Sepakat Village, Tungkal Ulu District	1° 12' 9.337" S	103° 2' 38.237" E	0.29	0.29	5.98	NL	21/07/2023
120	146	Ibrahim Ali Totok Laksono	Badang Sepakat Village, Tungkal Ulu District	1° 12' 16.141" S	103° 2' 49.311" E	1.30	1.30	26.35	NL	18-Aug-23
121	147	Inem 1	Badang Sepakat Village, Tungkal Ulu District	1° 12' 39.530" S	103° 2' 44.222" E	1.34	1.34	26.39	NL	08-Aug-22
	148	Inem 2	Badang Sepakat Village, Tungkal Ulu District	1° 12' 39.662" S	103° 2' 46.736" E	1.30	1.30	25.41	NL	08-Aug-22
	149	Inem 3	Badang Sepakat Village, Tungkal Ulu District	1° 11' 39.603" S	103° 5' 12.825" E	1.96	1.96	39.32	NL	10-Oct-22
122	150	Kasiman	Badang Sepakat Village, Tungkal Ulu District	1° 11' 54.011" S	103° 2' 51.337" E	0.44	0.44	9.15	NL	07-Jul-22
123	151	Kasini Fitri	Badang Sepakat Village, Tungkal Ulu District	1° 12' 1.795" S	103° 3' 30.803" E	1.12	1.12	20.82	NL	18-Aug-23
124	152	Kasyanto	Pematang Pauh Village, Tungkal Ulu District	1° 9' 10.116" S	103° 4' 18.341" E	1.23	1.23	22.92	NL	28-Aug-22
125	153	Legiman	Badang Sepakat Village, Tungkal Ulu District	1° 13' 6.979" S	103° 2' 48.897" E	0.40	0.40	8.12	NL	28-Aug-22
126	154	Mahno 1	Badang Sepakat Village, Tungkal Ulu District	1° 11' 47.832" S	103° 2' 43.723" E	1.81	1.81	36.29	NL	15/8/2022
	155	Mahno 2	Badang Sepakat Village, Tungkal Ulu District	1° 11' 59.520" S	103° 3' 0.304" E	0.70	0.70	14.60	NL	15/8/2022
127	156	Marlina	Badang Sepakat Village, Tungkal Ulu District	1° 12' 0.339" S	103° 3' 24.009" E	0.80	0.80	16.67	NL	15-Aug-22
128	157	Masriya	Badang Sepakat Village, Tungkal Ulu District	1° 11' 47.286" S	103° 2' 11.380" E	1.71	1.71	34.49	NL	15-Aug-22
129	158	Muhamad Hasim Ali 1	Badang Sepakat Village, Tungkal Ulu District	1° 12' 16.381" S	103° 2' 53.564" E	2.00	2.00	38.00	NL	10-Aug-22
	159	Muhamad Hasim Ali 2	Badang Sepakat Village, Tungkal Ulu District	1° 11' 54.698" S	103° 3' 14.651" E	0.68	0.68	14.18	NL	10-Aug-22
130	160	Mulyono	Pematang Pauh Village, Tungkal Ulu District	1° 10' 20.943" S	103° 4' 55.548" E	1.15	1.15	23.38	NL	20-Aug-22
131	161	Muryanti	Badang Sepakat Village, Tungkal Ulu District	1° 12' 6.507" S	103° 2' 24.383" E	0.12	0.12	2.34	NL	04-Oct-22
132	162	Nasan 1	Badang Sepakat Village, Tungkal Ulu District	1° 13' 3.321" S	103° 2' 43.338" E	1.75	1.75	34.48	NL	15/08/2022



No	No	Nama Petani	Lokasi	Titik Koordinat		Ringkasan Data Area (Ha)		Perkiraan Produksi TBS Tahunan (MT)	Status Liability (L/NL)	Tanggal Bergabung
				Latitude / Garis lintang	Longitude / Garis bujur	Total Area yang Disertifikasi	Area Tertanam			
	163	Nasan 2	Badang Sepakat Village, Tungkal Ulu District	1° 11' 39.829" S	103° 3' 22.925" E	1.00	1.00	20.24	NL	15/08/2022
133	164	Nasip 1	Badang Sepakat Village, Tungkal Ulu District	1° 12' 34.271" S	103° 2' 44.560" E	1.60	1.60	31.43	NL	15-Aug-22
	165	Nasip 2	Badang Sepakat Village, Tungkal Ulu District	1° 12' 53.679" S	103° 2' 42.844" E	1.50	1.50	28.28	NL	15-Aug-22
	166	Nasip 3	Badang Sepakat Village, Tungkal Ulu District	1° 11' 41.405" S	103° 2' 40.213" E	2.00	2.00	37.03	NL	08-Aug-22
134	167	Ngatmi 1	Badang Sepakat Village, Tungkal Ulu District	1° 12' 0.889" S	103° 2' 47.510" E	0.24	0.24	4.75	NL	08-Aug-22
	168	Ngatmi 2	Badang Sepakat Village, Tungkal Ulu District	1° 11' 52.004" S	103° 2' 30.384" E	1.93	1.93	38.77	NL	08-Aug-22
	169	Ngatmi 3	Badang Sepakat Village, Tungkal Ulu District	1° 11' 40.654" S	103° 2' 32.626" E	0.67	0.67	14.03	NL	08-Aug-22
135	170	Nurul Huda	Badang Sepakat Village, Tungkal Ulu District	1° 12' 28.478" S	103° 2' 27.607" E	0.50	0.50	10.07	NL	25-Jul-22
136	171	Ratmini 1	Badang Sepakat Village, Tungkal Ulu District	1° 12' 44.136" S	103° 2' 38.786" E	2.00	2.00	38.04	NL	18/08/2023
	172	Ratmini 2	Badang Sepakat Village, Tungkal Ulu District	1° 11' 50.769" S	103° 2' 25.601" E	2.00	2.00	40.08	NL	18/08/2023
137	173	Ricky Pranata	Tanjung Tayas Village, Tungkal Ulu District	1° 11' 42.957" S	103° 4' 5.190" E	1.00	1.00	18.51	NL	20/07/2023
138	174	Riski Sahadatul Khotimah	Badang Sepakat Village, Tungkal Ulu District	1° 11' 19.251" S	103° 2' 2.929" E	1.38	1.38	29.94	NL	08-Aug-22
139	175	Rubianto	Badang Sepakat Village, Tungkal Ulu District	1° 11' 54.458" S	103° 2' 59.861" E	1.07	1.07	23.97	NL	08-Aug-22
140	176	Salijo	Badang Sepakat Village, Tungkal Ulu District	1° 11' 42.006" S	103° 2' 14.260" E	0.50	0.50	9.26	NL	15-Aug-22
141	177	Samikun 1	Badang Sepakat Village, Tungkal Ulu District	1° 12' 2.874" S	103° 2' 47.435" E	0.50	0.50	9.46	NL	19-Aug-23
	178	Samikun 2	Badang Sepakat Village, Tungkal Ulu District	1° 12' 8.172" S	103° 2' 47.653" E	0.60	0.60	11.29	NL	19-Aug-23
142	179	Sarikem	Badang Sepakat Village, Tungkal Ulu District	1° 12' 1.806" S	103° 2' 27.848" E	0.44	0.44	8.57	NL	18-Aug-23
143	180	Sehmiati 1	Badang Sepakat Village, Tungkal Ulu District	1° 11' 25.618" S	103° 3' 28.972" E	1.00	1.00	19.62	NL	10-Aug-22
	181	Sehmiati 2	Badang Sepakat Village, Tungkal Ulu District	1° 12' 30.769" S	103° 2' 21.919" E	0.42	0.42	8.25	NL	19-Aug-22
144	182	Sodiq Purwanto	Tanjung Tayas Village, Tungkal Ulu District	1° 11' 44.551" S	103° 4' 16.156" E	0.59	0.59	12.49	NL	08-Aug-22
145	183	Sugeng 1	Badang Sepakat Village, Tungkal Ulu District	1° 13' 3.048" S	103° 2' 19.357" E	4.20	4.20	85.08	NL	08-Aug-22
	184	Sugeng 2	Badang Sepakat Village, Tungkal Ulu District	1° 12' 2.974" S	103° 2' 57.611" E	1.98	1.98	39.77	NL	08-Aug-22
	185	Sugeng 3	Badang Sepakat Village, Tungkal Ulu District	1° 12' 8.379" S	103° 2' 54.972" E	1.34	1.34	27.09	NL	08-Aug-22
146	186	Sugeng Riadi 1	Badang Sepakat Village, Tungkal Ulu District	1° 11' 36.927" S	103° 3' 33.190" E	2.00	2.00	40.08	NL	20-Aug-22
	187	Sugeng Riadi 2	Badang Sepakat Village, Tungkal Ulu District	1° 11' 40.846" S	103° 3' 32.649" E	2.00	2.00	39.37	NL	20-Aug-22
147	188	Suharno	Badang Sepakat Village, Tungkal Ulu District	1° 12' 12.091" S	103° 3' 22.362" E	1.84	1.84	36.16	NL	08-Aug-22
148	189	Sukarni	Badang Sepakat Village, Tungkal Ulu District	1° 12' 16.556" S	103° 2' 34.792" E	0.88	0.88	17.25	NL	01-Aug-22



No	No	Nama Petani	Lokasi	Titik Koordinat		Ringkasan Data Area (Ha)		Perkiraan Produksi TBS Tahunan (MT)	Status Liability (L/NL)	Tanggal Bergabung
				Latitude / Garis lintang	Longitude / Garis bujur	Total Area yang Disertifikasi	Area Tertanam			
149	190	Sukiyo 1	Pematang Pauh Village, Tungkal Ulu District	1° 10' 4.177" S	103° 5' 6.266" E	1.24	1.24	25.37	NL	08-Aug-22
	191	Sukiyo 2	Pematang Pauh Village, Tungkal Ulu District	1° 11' 9.651" S	103° 5' 0.849" E	1.40	1.40	28.30	NL	08-Aug-22
	192	Sukiyo 3	Badang Sepakat Village, Tungkal Ulu District	1° 12' 23.917" S	103° 3' 6.371" E	0.25	0.25	5.03	NL	08-Aug-22
	193	Sukiyo 4	Badang Sepakat Village, Tungkal Ulu District	1° 12' 47.816" S	103° 2' 43.118" E	1.75	1.75	35.16	NL	08-Aug-22
	194	Sukiyo 5	Badang Sepakat Village, Tungkal Ulu District	1° 12' 13.495" S	103° 2' 35.182" E	0.24	0.24	5.01	NL	08-Aug-22
	195	Sukiyo 6	Badang Sepakat Village, Tungkal Ulu District	1° 12' 13.532" S	103° 2' 34.340" E	0.26	0.26	5.62	NL	08-Aug-22
	196	Sukiyo 7	Badang Sepakat Village, Tungkal Ulu District	1° 11' 45.320" S	103° 2' 57.423" E	2.00	2.00	40.02	NL	08-Aug-22
	197	Sukiyo 8	Badang Sepakat Village, Tungkal Ulu District	1° 11' 50.067" S	103° 2' 56.215" E	1.00	1.00	20.24	NL	08-Aug-22
150	198	Sulastri A	Tanjung Tayas Village, Tungkal Ulu District	1° 13' 11.832" S	103° 4' 49.392" E	1.04	1.04	19.24	NL	18-Aug-23
151	199	Sumarni	Badang Sepakat Village, Tungkal Ulu District	1° 12' 34.860" S	103° 2' 47.663" E	0.88	0.88	18.20	NL	15/08/2022
152	200	Sumiati	Badang Sepakat Village, Tungkal Ulu District	1° 11' 45.852" S	103° 2' 41.739" E	0.45	0.45	9.09	NL	18-Aug-23
153	201	Sunarto A	Pematang Pauh Village, Tungkal Ulu District	1° 10' 32.143" S	103° 4' 39.232" E	1.53	1.53	28.92	NL	18-Aug-23
154	202	Suparjo	Badang Sepakat Village, Tungkal Ulu District	1° 11' 55.700" S	103° 3' 17.720" E	1.59	1.59	32.01	NL	18-Aug-23
155	203	Suparmi	Badang Sepakat Village, Tungkal Ulu District	1° 13' 15.599" S	103° 3' 2.480" E	1.00	1.00	20.21	NL	20/07/2023
156	204	Supin	Badang Sepakat Village, Tungkal Ulu District	1° 12' 11.936" S	103° 2' 44.488" E	0.23	0.23	4.67	NL	21/07/2023
157	205	Tentrem Raharjo	Pematang Pauh Village, Tungkal Ulu District	1° 10' 17.750" S	103° 5' 45.257" E	4.60	4.60	90.86	NL	20-Aug-22
158	206	Wajiono	Badang Sepakat Village, Tungkal Ulu District	1° 11' 48.604" S	103° 2' 53.476" E	0.22	0.22	4.71	NL	15-Aug-22
159	207	Wartinem	Badang Sepakat Village, Tungkal Ulu District	1° 11' 49.239" S	103° 2' 50.344" E	0.41	0.41	8.07	NL	08-Aug-22
160	208	Wiliasni	Pematang Pauh Village, Tungkal Ulu District	1° 10' 32.712" S	103° 5' 41.955" E	3.40	3.40	67.42	NL	15-Aug-22
161	209	Wiwin Purwaningsih	Tanjung Tayas Village, Tungkal Ulu District	1° 11' 14.129" S	103° 3' 23.452" E	1.00	1.00	20.24	NL	15/7/2023
162	210	Wiyati	Tanjung Tayas Village, Tungkal Ulu District	1° 11' 56.342" S	103° 2' 40.502" E	0.27	0.27	6.09	NL	21/07/2023
163	211	Basiran 1	Badang Sepakat Village, Tungkal Ulu District	1° 13' 8.528" S	103° 4' 8.799" E	0.75	0.75	15.66	NL	25-Jul-22
	212	Basiran 2	Tanjung Tayas Village, Tungkal Ulu District	1° 11' 40.838" S	103° 3' 28.693" E	0.78	0.78	16.11	NL	25-Jul-22
164	213	Desi Lestari	Tanjung Tayas Village, Tungkal Ulu District	1° 11' 31.721" S	103° 3' 47.792" E	1.82	1.82	36.58	NL	15-Aug-22
165	214	Eddy Suyono	Badang Sepakat Village, Tungkal Ulu District	1° 12' 6.707" S	103° 2' 25.315" E	0.24	0.24	5.02	NL	26-Dec-22
166	215	Eko Budiono 1	Badang Sepakat Village, Tungkal Ulu District	1° 12' 58.411" S	103° 4' 13.334" E	0.75	0.75	15.73	NL	26-Dec-22
	216	Eko Budiono 2	Badang Sepakat Village, Tungkal Ulu District	1° 13' 1.809" S	103° 2' 13.052" E	0.83	0.83	17.18	NL	26-Dec-22



No	No	Nama Petani	Lokasi	Titik Koordinat		Ringkasan Data Area (Ha)		Perkiraan Produksi TBS Tahunan (MT)	Status Liability (L/NL)	Tanggal Bergabung
				Latitude / Garis lintang	Longitude / Garis bujur	Total Area yang Disertifikasi	Area Tertanam			
	217	Eko Budiono 3	Badang Sepakat Village, Tungkal Ulu District	1° 11' 38.930" S	103° 3' 12.178" E	0.35	0.35	6.94	NL	26-Dec-22
	218	Eko Budiono 4	Badang Sepakat Village, Tungkal Ulu District	1° 11' 53.084" S	103° 3' 18.003" E	0.60	0.60	12.78	NL	26-Dec-22
167	219	Eni Purwati	Badang Sepakat Village, Tungkal Ulu District	1° 12' 18.203" S	103° 4' 25.485" E	1.50	1.50	30.31	NL	07-Aug-22
168	220	Hadi Sucipto	Tanjung Tayas Village, Tungkal Ulu District	1° 11' 10.970" S	103° 3' 55.863" E	1.20	1.20	24.38	NL	19-Aug-22
169	221	Imam Yulianto	Badang Sepakat Village, Tungkal Ulu District	1° 11' 23.062" S	103° 3' 39.012" E	1.15	1.15	24.49	NL	19-Aug-22
170	222	Jumono	Badang Sepakat Village, Tungkal Ulu District	1° 11' 47.218" S	103° 2' 34.921" E	0.25	0.25	4.92	NL	07-Jul-22
171	223	Kosim	Badang Sepakat Village, Tungkal Ulu District	1° 12' 57.887" S	103° 2' 8.740" E	0.56	0.56	11.95	NL	26-Dec-22
172	224	Kurnelliyus Gimo	Badang Sepakat Village, Tungkal Ulu District	1° 11' 52.372" S	103° 2' 53.023" E	2.00	2.00	40.08	NL	08-Jul-22
173	225	Lusmiati	Badang Sepakat Village, Tungkal Ulu District	1° 12' 47.076" S	103° 3' 23.835" E	0.79	0.79	16.44	NL	07-Aug-22
174	226	Marno	Badang Sepakat Village, Tungkal Ulu District	1° 11' 34.523" S	103° 3' 39.025" E	1.00	1.00	20.24	NL	20-Aug-22
175	227	Mulyadi	Badang Sepakat Village, Tungkal Ulu District	1° 11' 3.042" S	103° 2' 35.178" E	1.47	1.47	29.63	NL	15-Aug-22
176	228	Ngatijo	Badang Sepakat Village, Tungkal Ulu District	1° 12' 59.273" S	103° 2' 16.228" E	1.00	1.00	20.28	NL	15-Aug-22
177	229	Niswan 1	Tanjung Tayas Village, Tungkal Ulu District	1° 11' 29.713" S	103° 4' 42.612" E	1.37	1.37	28.79	NL	26-Dec-22
	230	Niswan 2	Badang Sepakat Village, Tungkal Ulu District	1° 11' 49.900" S	103° 3' 24.979" E	1.55	1.55	30.44	NL	26-Dec-20
178	231	Nurhayati	Badang Sepakat Village, Tungkal Ulu District	1° 12' 10.306" S	103° 2' 47.529" E	0.24	0.24	4.88	NL	26-Dec-22
179	232	Rajiman	Badang Sepakat Village, Tungkal Ulu District	1° 12' 55.048" S	103° 2' 47.294" E	1.12	1.12	20.76	NL	15-Aug-22
180	233	Rasikun	Tanjung Tayas Village, Tungkal Ulu District	1° 11' 18.984" S	103° 3' 55.014" E	2.40	2.40	47.90	NL	15-Aug-22
181	234	Raswan A 1	Tanjung Tayas Village, Tungkal Ulu District	1° 10' 56.951" S	103° 3' 22.292" E	1.40	1.40	28.36	NL	20-Aug-22
	235	Raswan A 2	Badang Sepakat Village, Tungkal Ulu District	1° 12' 48.162" S	103° 2' 37.317" E	0.95	0.95	19.57	NL	20-Aug-22
	236	Raswan A 3	Badang Sepakat Village, Tungkal Ulu District	1° 12' 28.025" S	103° 2' 21.618" E	0.95	0.95	19.57	NL	20-Aug-22
	237	Raswan A 4	Badang Sepakat Village, Tungkal Ulu District	1° 11' 51.056" S	103° 1' 56.103" E	1.00	1.00	19.62	NL	20-Aug-22
182	238	Royiati	Tanjung Tayas Village, Tungkal Ulu District	1° 11' 41.522" S	103° 3' 55.045" E	1.73	1.73	34.52	NL	19-Aug-22
183	239	Samin	Badang Sepakat Village, Tungkal Ulu District	1° 11' 39.863" S	103° 3' 19.675" E	1.29	1.29	26.13	NL	20-Aug-22
184	240	Siti Rokayah 1	Badang Sepakat Village, Tungkal Ulu District	1° 12' 15.643" S	103° 2' 45.935" E	1.28	1.28	25.92	NL	08-Aug-22
	241	Siti Rokayah 2	Tanjung Tayas Village, Tungkal Ulu District	1° 11' 6.746" S	103° 3' 27.737" E	1.33	1.33	26.44	NL	08-Aug-22
185	242	Sonah	Badang Sepakat Village, Tungkal Ulu District	1° 12' 19.143" S	103° 2' 42.236" E	0.90	0.90	18.54	NL	15-Aug-22
186	243	Subakri	Tanjung Tayas Village, Tungkal Ulu District	1° 11' 37.688" S	103° 4' 0.965" E	1.03	1.03	20.32	NL	08-Jul-22



No	No	Nama Petani	Lokasi	Titik Koordinat		Ringkasan Data Area (Ha)		Perkiraan Produksi TBS Tahunan (MT)	Status Liability (L/NL)	Tanggal Bergabung
				Latitude / Garis lintang	Longitude / Garis bujur	Total Area yang Disertifikasi	Area Tertanam			
187	244	Sucipto	Tanjung Tayas Village, Tungkal Ulu District	1° 11' 39.312" S	103° 3' 56.546" E	1.57	1.57	32.74	NL	19-Aug-22
188	245	Sudar 1	Tanjung Tayas Village, Tungkal Ulu District	1° 11' 38.355" S	103° 3' 45.537" E	1.73	1.73	34.78	NL	07-Aug-22
	246	Sudar 2	Tanjung Tayas Village, Tungkal Ulu District	1° 11' 36.399" S	103° 3' 49.073" E	1.23	1.23	25.04	NL	07-Aug-22
	247	Sudar 3	Badang Sepakat Village, Tungkal Ulu District	1° 11' 23.236" S	103° 2' 7.610" E	1.04	1.04	19.20	NL	07-Aug-22
	248	Sudar 4	Badang Sepakat Village, Tungkal Ulu District	1° 12' 9.882" S	103° 2' 14.186" E	0.27	0.27	6.02	NL	07-Aug-22
189	249	Sugiarto 1	Badang Sepakat Village, Tungkal Ulu District	1° 12' 52.504" S	103° 2' 8.069" E	1.29	1.29	27.25	NL	26-Dec-22
	250	Sugiarto 2	Badang Sepakat Village, Tungkal Ulu District	1° 11' 32.445" S	103° 3' 33.086" E	0.98	0.98	19.27	NL	26-Dec-22
	251	Sugiarto 3	Badang Sepakat Village, Tungkal Ulu District	1° 11' 40.735" S	103° 3' 15.184" E	0.94	0.94	19.24	NL	26-Dec-22
190	252	Suhendri	Tanjung Tayas Village, Tungkal Ulu District	1° 11' 7.467" S	103° 3' 20.222" E	2.00	2.00	40.04	NL	15-Aug-22
191	253	Sukamto 1	Badang Sepakat Village, Tungkal Ulu District	1° 12' 10.058" S	103° 2' 23.732" E	0.24	0.24	5.05	NL	07-Aug-22
	254	Sukamto 2	Tanjung Tayas Village, Tungkal Ulu District	1° 12' 20.578" S	103° 4' 24.688" E	0.89	0.89	18.30	NL	07-Aug-22
	255	Sukamto 3	Tanjung Tayas Village, Tungkal Ulu District	1° 11' 36.892" S	103° 4' 57.875" E	0.78	0.78	16.32	NL	07-Aug-22
192	256	Sulbani	Badang Sepakat Village, Tungkal Ulu District	1° 11' 48.458" S	103° 2' 40.085" E	1.35	1.35	26.39	NL	07-Aug-22
193	257	Sumadi 1	Badang Sepakat Village, Tungkal Ulu District	1° 12' 24.657" S	103° 3' 2.805" E	0.35	0.35	6.94	NL	15-Aug-22
	258	Sumadi 2	Badang Sepakat Village, Tungkal Ulu District	1° 12' 23.617" S	103° 3' 4.231" E	0.50	0.50	10.07	NL	20-Aug-22
194	259	Suparto 1	Badang Sepakat Village, Tungkal Ulu District	1° 12' 59.870" S	103° 2' 10.593" E	1.20	1.20	24.43	NL	07-Aug-22
	260	Suparto 2	Badang Sepakat Village, Tungkal Ulu District	1° 12' 53.787" S	103° 2' 53.666" E	0.90	0.90	18.59	NL	15-Aug-22
195	261	Supiati	Tanjung Tayas Village, Tungkal Ulu District	1° 11' 4.076" S	103° 3' 19.062" E	0.93	0.93	19.18	NL	08-Jul-22
196	262	Suranti	Badang Sepakat Village, Tungkal Ulu District	1° 11' 48.989" S	103° 2' 34.697" E	1.48	1.48	29.90	NL	15-Aug-22
197	263	Susilawati	Badang Sepakat Village, Tungkal Ulu District	1° 12' 53.198" S	103° 2' 55.496" E	1.01	1.01	20.28	NL	15-Aug-22
198	264	Suwondo 1	Badang Sepakat Village, Tungkal Ulu District	1° 12' 6.406" S	103° 2' 19.748" E	0.25	0.25	4.97	NL	15-Aug-22
	265	Suwondo 2	Tanjung Tayas Village, Tungkal Ulu District	1° 11' 31.184" S	103° 3' 50.796" E	1.71	1.71	33.52	NL	15-Aug-22
199	266	Suyetno 1	Badang Sepakat Village, Tungkal Ulu District	1° 11' 47.715" S	103° 3' 31.983" E	0.83	0.83	17.17	NL	19-Aug-22
	267	Suyetno 2	Badang Sepakat Village, Tungkal Ulu District	1° 12' 29.766" S	103° 2' 24.864" E	1.25	1.25	25.39	NL	19-Aug-22
	268	Suyetno 3	Tanjung Tayas Village, Tungkal Ulu District	1° 12' 32.562" S	103° 4' 42.030" E	1.59	1.59	32.01	NL	19-Aug-22
200	269	Taryo	Tanjung Tayas Village, Tungkal Ulu District	1° 11' 14.591" S	103° 3' 33.715" E	1.34	1.34	25.19	NL	20-Aug-22
201	270	TH Sunarti	Badang Sepakat Village, Tungkal Ulu District	1° 11' 51.919" S	103° 3' 0.425" E	1.12	1.12	20.90	NL	07-Aug-22



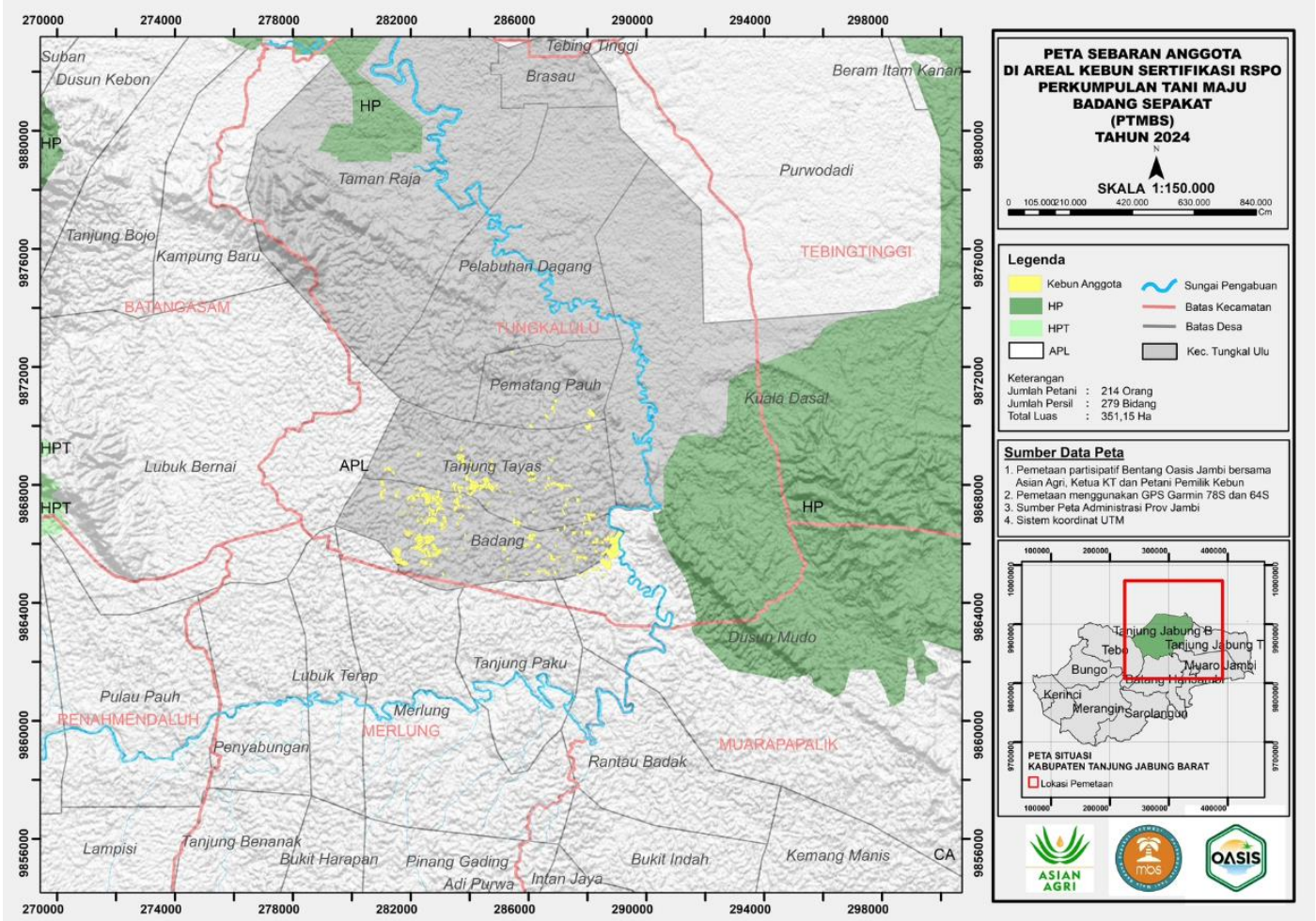
No	No	Nama Petani	Lokasi	Titik Koordinat		Ringkasan Data Area (Ha)		Perkiraan Produksi TBS Tahunan (MT)	Status Liability (L/NL)	Tanggal Bergabung
				Latitude / Garis lintang	Longitude / Garis bujur	Total Area yang Disertifikasi	Area Tertanam			
202	271	Tias Fitri Rahayu	Badang Sepakat Village, Tungkal Ulu District	1° 12' 19.869" S	103° 3' 18.141" E	1.02	1.02	18.98	NL	20-Aug-22
203	272	Tugi Priono 1	Badang Sepakat Village, Tungkal Ulu District	1° 11' 30.312" S	103° 4' 37.384" E	0.50	0.50	9.86	NL	26-Dec-22
	273	Tugi Priono 2	Tanjung Tayas Village, Tungkal Ulu District	1° 11' 9.995" S	103° 3' 24.357" E	1.49	1.49	28.00	NL	26-Dec-22
	274	Tugi Priono 3	Badang Sepakat Village, Tungkal Ulu District	1° 12' 45.785" S	103° 2' 29.165" E	0.75	0.75	15.73	NL	26-Dec-22
204	275	Umiatun (Sumadi) A	Badang Sepakat Village, Tungkal Ulu District	1° 11' 56.252" S	103° 2' 45.537" E	1.87	1.87	37.60	NL	02-Aug-22
205	276	Umiatun(Mahno) B1	Badang Sepakat Village, Tungkal Ulu District	1° 11' 47.405" S	103° 2' 47.044" E	0.70	0.70	14.69	NL	18-Aug-22
	277	Umiatun(Mahno) B2	Badang Sepakat Village, Tungkal Ulu District	1° 12' 13.897" S	103° 2' 38.400" E	0.55	0.55	11.76	NL	18-Aug-22
206	278	Usman Wahyudi	Badang Sepakat Village, Tungkal Ulu District	1° 12' 6.427" S	103° 2' 20.553" E	0.27	0.27	5.85	NL	26-Dec-22
207	279	Waris	Tanjung Tayas Village, Tungkal Ulu District	1° 11' 4.997" S	103° 3' 23.811" E	1.39	1.39	28.09	NL	28-Aug-22
208	280	Wasito Bejak	Badang Sepakat Village, Tungkal Ulu District	1° 12' 53.616" S	103° 2' 51.602" E	1.10	1.10	20.47	NL	18-Aug-22
209	281	Wiwik Sekar	Badang Sepakat Village, Tungkal Ulu District	1° 12' 13.317" S	103° 2' 50.054" E	1.32	1.32	24.76	NL	07-Jul-22
210	282	Yohanes Riwanto	Badang Sepakat Village, Tungkal Ulu District	1° 11' 49.901" S	103° 3' 21.756" E	1.01	1.01	23.97	NL	20-Aug-22
TOTAL						338.04	338.04	6,714.42		

Note: L - with Liability; NL - No Liability

The members to this certification does not involve new development. Consequently, there is no NPP process.

To navigate the details of the RaCP, more information in regard to the potential liability can be found from RSPO website (<https://www.rspo.org/certification/remediation-and-compensation/racp-tracker>)

3. Location maps of Perkumpulan Tani Maju Badang Sepakat



BSI Services Malaysia Sdn. Bhd. is accredited to provide independent third-party RSPO P&C and RSPO SCCS certification services. BSI Malaysia is a subsidiary of BSI Group, a Royal Charter Company. BSI is the world’s Trusted brand in providing business improvement solutions with more than 86,000 clients in over 193 countries. BSI’s mission is to share knowledge, innovation and best practice to help people and organizations make excellence a habit. BSI is the U.K.’s National Standards Body. BSI Services Malaysia Sdn. Bhd. has RSPO affiliate offices in Indonesia, Australia, China and India.

The audit team for this audit will consist of the following:

Audit Team	Role/Area of Requirement	Qualification and Experience
Eko Prastio Ramadhan	Team Leader Auditing legal compliance, code of ethical conduct, productivity and long-term economic planning, operational procedures, organization policies, ICS D. Auditing social aspects, continuous improvement, environmental management, ICS A	Education: Holds a Bachelor Degree in Forest Resources Conservation and Ecotourism from Forestry Faculty, Bogor Agricultural University (IPB). Work Experience: Over 4 years of working experience in biodiversity officer with Birdlife Indonesia and consultant with PT Inoa Konsultindo. Over 2½ years of working experience in palm oil estate with PT Salim Ivomas Pratama Tbk and Capitol Plantation Group implementing sustainability. Over 4½ years of working experience as RSPO P&C Certification Program Manager



		<p>and auditor covering standard such as RSPO P&C, RSPO SCCS, ISPO, ISO 9001 and ISO 14001.</p> <p>Training attended: Completed ISO 14001:2015 Lead Auditor Course, Endorsed RSPO P&C Lead Auditor Course, Social Impact Assessment Training, Endorsed RSPO SCC Auditor Lead Auditor Course, ISPO Auditor Batch 19 Training, ISO 9001 Lead Auditor Course and Identification of HCV Areas Training.</p> <p>Language proficiency: Fluent in Bahasa Indonesia and English</p>
Briyogi Shadiwa	<p>Team Member</p> <p>Auditing Best Management Practices for Estate/Plantation, Worker welfare, Consultation with Workers, Consultation with Stakeholders, ICS.</p>	<p>Education: Holds a Diploma in Agriculture from Institut Pertanian Bogor.</p> <p>Work Experience: 3 years of working experience in oil palm plantation industry with SMART, Tbk. More than 5 years of working experience as RSPO P&C and ISPO P&C auditor covering standard such as RSPO P&C and ISPO P&C.</p> <p>Training attended: Completed Endorsed RSPO P&C Lead Auditor Course, RSPO ISH Standard Training Course and Endorsed RSPO Supply Chain Lead Auditor Training Course, ISPO Lead Auditor Course, Social Auditing Training, SA8000 Training, ISO 9001 Lead Auditor Course, ISO 18001 Lead Auditor Course.</p> <p>Language proficiency: Fluent in Bahasa Indonesia and English</p>
Nanang Rusmana	<p>Team Member</p> <p>Auditing OHS, human rights protection, continuous improvement, OHS, human rights, HCV and conservation.</p>	<p>Education: Holds a Bachelor Degree of Forestry, Bogor Agricultural University (IPB)</p> <p>Work Experience: 5 years working experience in palm oil industry as SHE Assistant at PT. Astra Agro Lestari Tbk. 3 years working experience in mining industry as Environment Coordinator and SHE Coordinator with PT. Kapuas Prima Coal Group. 6 years working experience as RSPO/ISPO auditor</p> <p>Training attended: Completed ISO 9001:2015 Lead Auditor Course, ISPO Auditor Course, ISO 14001:2015 Lead Auditor Course, ISO 45001:2018 Lead Auditor Course, Endorsed RSPO P&C Lead Auditor Course, Endorsed RSPO Supply Chain Certification Lead Auditor Course, SMK3 Auditor Course, HCV Assessor Course, General OHS Expert Course, SMETA Requirements training.</p> <p>Language proficiency: Fluent in Bahasa Indonesia and English</p>

In preparation for the assessment. related stakeholders are invited to provide written input regarding this assessment by commenting on related aspects to the certification unit. Topics that you may wish to comment on are as follows but not limited to:

- Environmental Protection & conservation
- Human rights & workers welfare
- Opportunity for employment
- Company approach to community development
- Your relationship with the company
- Participation in decision making
- Free. prior and informed consent
- Suggestion for improvement

Comments that are received within 30 days from the date of this letter will be considered in the Assessment. Please include the following details in case we may need to contact you for clarification or follow-up on any issue raised by you.

Name:

Email:



Position:

Phone Number:

If you wish your comments to be treated confidentially or to remain anonymous. please mark your reply "CONFIDENTIAL". You may direct your comments to:

Scheme Manager:

Dr. Chaiyaporn Seekao
BSI Services Malaysia Sdn. Bhd.
Suite 29.01 Level 29 The Gardens North
Tower, Mid Valley City Lingkaran Syed
Putra 59200 Kuala Lumpur
Federal Territory, Malaysia
Fax : +603 9212 9639
Email : Chaiyaporn.Seekao@bsigroup.com

AND / OR

Auditee:

Ali Sudarto (Group Manager)
Perkumpulan Tani Maju Badang Sepakat
Badang Sepakat Village, Tungkal Ulu District,
Tanjung Jabung Barat Regency, Jambi Province,
Indonesia
Email : badangsepakat24@gmail.com

We thank you and appreciate for your comments.

Yours sincerely.

.....

Chaiyaporn Seekao, Ph.D.
Technical and Compliance Manager - Food
(RSPO)
BSI Services Malaysia Sdn Bhd