

Date: 22 August 2022

**Public Notification: RSPO Initial Certification MS B Audit of Koperasi Serba Usaha Kel'ean Blom Kejah (RSPO Membership: 1-0394-22-000-00)**

Dear Stakeholders.

This is to inform that Koperasi Serba Usaha Kel'ean Blom Kejah with RSPO membership number (1-0394-22-000-00) had appointed BSI Services Malaysia Sdn Bhd ("BSI Malaysia") to conduct the Initial Certification (Eligibility, MSA, MSB) Audit located in Kalimantan Timur Province. The audit will be conducted from 24-26 October 2022 against the requirements of RSPO Independent Smallholder Standard – Indonesian National Interpretation endorsed on 14 February 2022. The supply chain model is Identity Preserved.

RSPO PO ID number of the Koperasi Serba Usaha Kel'ean Blom Kejah is: RSPO\_PO1000014562

Organization background: Koperasi Serba Usaha Kel'ean Blom Kejah located in Nehes Liah Bing village, Muara Wahau district, Kutai Timur regency, Kalimantan Timur Province, Indonesia. The organization Koperasi Serba Usaha Kel'ean Blom Kejah was established 18 August 2009. The organization comprise of 133 smallholder managing oil palm plantation of 192 land parcels with total area of 426.13 Ha. The smallholder member of Koperasi Serba Usaha Kel'ean Blom Kejah gets access to training and mentoring from GIZ and Kutai Timur Regency Government. The member of the organization committed to support the production of sustainable palm oil production.

1. The information of the production data to be assessed are as follows:

Koperasi Serba Usaha Kel'ean Blom Kejah		
<b>Independent Smallholder Group Name</b>		Koperasi Serba Usaha Kel'ean Blom Kejah
<b>Number of group member</b>		133 smallholder members with 192 land parcels
<b>Address / Location</b>		Bahlang Street No.27, RT005, Nehes Liah Bing Village, Muara Wahau District, Kutai Timur Regency, Kalimantan Timur Province, Indonesia
<b>GPS Reference</b> (in degree. minute & second)	<b>Latitude</b>	1° 3' 46.47" N
	<b>Longitude</b>	116° 51' 42.85" E
<b>Forecast Annual Output (MT)</b>	<b>CPO</b>	1,620.00 MT
	<b>PK</b>	405.00 MT
	<b>FFB</b>	8,100.00 MT

2. The Smallholders Member details are as follows:

No.	Estate / Member	Location	GPS Reference		Area Summary (Ha)		Annual FFB Forecast (MT)	Liability Status (L/NL)	Date join (for ISH)
			Latitude (N)	Longitude (E)	Total Area to be Certified	Planted Area			
1	Amat	Nehes Liah Bing	1° 2' 35.56"N	116° 52' 4.58"E	1.50	1.50	28.5	NL	14/02/2022
2	Anselmus Abdul Azis	Nehes Liah Bing	1° 3' 1.65"N	116° 52' 22.03"E	4.68	4.68	88.9	NL	14/02/2022
3	Arie Yandeng R.H b	Nehes Liah Bing	1° 2' 24.51"N	116° 52' 3.98"E	1.50	1.50	28.5	NL	14/02/2022
4	Arie Yandeng R.H a	Nehes Liah Bing	1° 2' 6.37"N	116° 52' 23.91"E	1.80	1.80	34.2	NL	14/02/2022
5	Beang Teguen b	Nehes Liah Bing	1° 2' 22.43"N	116° 52' 17.90"E	2.40	2.40	45.6	NL	14/02/2022

Public

No.	Estate / Member	Location	GPS Reference		Area Summary (Ha)		Annual FFB Forecast (MT)	Liability Status (L/NL)	Date join (for ISH)
			Latitude (N)	Longitude (E)	Total Area to be Certified	Planted Area			
6	Beang Teguen a	Nehes Liah Bing	1° 2' 17.81"N	116° 52' 17.02"E	2.00	2.00	38.0	NL	14/02/2022
7	Benivasius Lie	Nehes Liah Bing	1° 1' 58.86"N	116° 52' 33.36"E	5.00	5.00	95.0	NL	14/02/2022
8	Calung	Nehes Liah Bing	1° 2' 44.94"N	116° 52' 17.18"E	3.78	3.78	71.7	NL	14/02/2022
9	Dea Tung	Nehes Liah Bing	1° 5' 19.43"N	116° 52' 6.85"E	5.84	5.84	111.0	NL	14/02/2022
10	Diana Leang Kaq	Nehes Liah Bing	1° 2' 48.47"N	116° 52' 20.86"E	0.90	0.90	17.1	NL	14/02/2022
11	Diana Ping	Nehes Liah Bing	1° 4' 45.96"N	116° 51' 54.83"E	2.33	2.33	44.3	NL	14/02/2022
12	Eddy Zulkarnaen a	Nehes Liah Bing	1° 4' 17.72"N	116° 52' 23.42"E	1.93	1.93	36.7	NL	14/02/2022
13	Eddy Zulkarnaen b	Nehes Liah Bing	1° 4' 7.24"N	116° 52' 29.00"E	1.24	1.24	23.6	NL	14/02/2022
14	Elisabeth a	Nehes Liah Bing	1° 2' 55.26"N	116° 52' 13.62"E	1.55	1.55	29.5	NL	14/02/2022
15	Elisabeth b	Nehes Liah Bing	1° 2' 59.96"N	116° 52' 13.70"E	1.66	1.66	31.5	NL	14/02/2022
16	Emiliana	Nehes Liah Bing	1° 1' 57.15"N	116° 52' 39.90"E	2.10	2.10	39.9	NL	14/02/2022
17	Fransiskus Heluy	Nehes Liah Bing	1° 3' 44.90"N	116° 52' 23.15"E	1.44	1.44	27.3	NL	14/02/2022
18	Fransiskus Laq Dom a	Nehes Liah Bing	1° 4' 34.36"N	116° 52' 21.13"E	1.66	1.66	31.6	NL	14/02/2022
19	Fransiskus Laq Dom b	Nehes Liah Bing	1° 4' 34.63"N	116° 52' 19.44"E	1.69	1.69	32.1	NL	14/02/2022
20	Geah Ledan	Nehes Liah Bing	1° 4' 39.04"N	116° 52' 0.24"E	1.48	1.48	28.2	NL	14/02/2022
21	Gode Fridus Gaya	Nehes Liah Bing	1° 4' 55.56"N	116° 51' 52.70"E	1.26	1.26	23.9	NL	14/02/2022
22	Shinta Agustin	Nehes Liah Bing	1° 2' 33.67"N	116° 52' 7.88"E	1.17	1.17	22.1	NL	14/02/2022
23	Hamdiah Blak a	Nehes Liah Bing	1° 2' 29.36"N	116° 52' 13.07"E	1.15	1.15	21.9	NL	14/02/2022
24	Hamdiah Blak b	Nehes Liah Bing	1° 5' 3.71"N	116° 52' 18.86"E	1.89	1.89	36.0	NL	14/02/2022
25	Hamdiah Blak c	Nehes Liah Bing	1° 2' 33.24"N	116° 52' 14.14"E	1.15	1.15	21.9	NL	14/02/2022
26	Hamdiah Blak d	Nehes Liah Bing	1° 2' 34.17"N	116° 52' 10.84"E	3.50	3.50	66.4	NL	14/02/2022
27	Hamdiah Blak e	Nehes Liah Bing	1° 4' 36.07"N	116° 51' 57.06"E	1.87	1.87	35.5	NL	14/02/2022
28	Hamdiah Blak f	Nehes Liah Bing	1° 4' 58.58"N	116° 52' 21.77"E	2.24	2.24	42.5	NL	14/02/2022
29	Hendrie	Nehes Liah Bing	1° 2' 13.09"N	116° 52' 12.92"E	3.32	3.32	63.1	NL	14/02/2022
30	Jemaq Doh	Nehes Liah Bing	1° 4' 24.17"N	116° 51' 25.00"E	3.85	3.85	73.2	NL	14/02/2022
31	Jeneria Kenhi	Nehes Liah Bing	1° 4' 14.58"N	116° 52' 15.29"E	0.91	0.91	17.3	NL	14/02/2022
32	Joni Ratip	Nehes Liah Bing	1° 2' 23.68"N	116° 52' 8.00"E	1.70	1.70	32.3	NL	14/02/2022
33	Klara Deng Ba	Nehes Liah Bing	1° 3' 25.83"N	116° 52' 21.97"E	5.45	5.45	103.5	NL	14/02/2022
34	Kristian Hasmadi	Nehes Liah Bing	1° 3' 41.44"N	116° 50' 41.57"E	1.08	1.08	20.6	NL	14/02/2022
35	Kristina Geling	Nehes Liah Bing	1° 5' 36.32"N	116° 52' 26.31"E	5.00	5.00	95.0	NL	14/02/2022
36	Long Jeq a	Nehes Liah Bing	1° 4' 29.91"N	116° 51' 22.81"E	0.44	0.44	8.4	NL	14/02/2022
37	Long Jeq b	Nehes Liah Bing	1° 4' 32.30"N	116° 51' 21.35"E	1.52	1.52	28.9	NL	14/02/2022
38	Margareta Sumiati	Nehes Liah Bing	1° 5' 28.54"N	116° 51' 48.63"E	6.18	6.18	117.4	NL	14/02/2022
39	Maria Makdalena Dom But	Nehes Liah Bing	1° 4' 43.76"N	116° 52' 9.91"E	1.88	1.88	35.7	NL	14/02/2022
40	Marsilius D	Nehes Liah Bing	1° 4' 12.10"N	116° 52' 26.11"E	1.80	1.80	34.2	NL	14/02/2022
41	Marta Long Bing a	Nehes Liah Bing	1° 3' 23.26"N	116° 51' 28.50"E	9.70	9.70	184.3	NL	14/02/2022
42	Marta Long Bing b	Nehes Liah Bing	1° 3' 42.28"N	116° 51' 33.28"E	0.55	0.55	10.5	NL	14/02/2022
43	Marta Long Bing c	Nehes Liah Bing	1° 3' 43.93"N	116° 51' 33.82"E	0.76	0.76	14.5	NL	14/02/2022



Inspiring trust for a more resilient world.

Public

No.	Estate / Member	Location	GPS Reference		Area Summary (Ha)		Annual FFB Forecast (MT)	Liability Status (L/NL)	Date join (for ISH)
			Latitude (N)	Longitude (E)	Total Area to be Certified	Planted Area			
44	Marta Long Bing d	Nehes Liah Bing	1° 3' 41.35"N	116° 51' 19.50"E	0.76	0.76	14.4	NL	14/02/2022
45	Marta Long Bing e	Nehes Liah Bing	1° 3' 40.59"N	116° 51' 18.02"E	0.79	0.79	15.0	NL	14/02/2022
46	Mat Deng	Nehes Liah Bing	1° 4' 44.81"N	116° 51' 39.14"E	3.66	3.66	69.6	NL	14/02/2022
47	Metodius Jiang Ping	Nehes Liah Bing	1° 4' 54.80"N	116° 51' 35.97"E	2.26	2.26	43.0	NL	14/02/2022
48	Mika Debi	Nehes Liah Bing	1° 5' 2.97"N	116° 52' 23.86"E	2.98	2.98	56.6	NL	14/02/2022
49	Muhammad Nasirudin	Nehes Liah Bing	1° 2' 26.47"N	116° 52' 23.57"E	1.20	1.20	22.8	NL	14/02/2022
50	Petrus Kejuk a	Nehes Liah Bing	1° 4' 22.85"N	116° 52' 11.23"E	3.50	3.50	66.5	NL	14/02/2022
51	Petrus Kejuk b	Nehes Liah Bing	1° 2' 35.13"N	116° 51' 59.72"E	1.22	1.22	23.2	NL	14/02/2022
52	Poedjiono	Nehes Liah Bing	1° 4' 16.95"N	116° 52' 20.05"E	1.78	1.78	33.8	NL	14/02/2022
53	Riwan Sanusi a	Nehes Liah Bing	1° 3' 10.78"N	116° 52' 19.25"E	1.57	1.57	29.8	NL	14/02/2022
54	Riwan Sanusi b	Nehes Liah Bing	1° 2' 39.90"N	116° 52' 12.14"E	1.05	1.05	19.9	NL	14/02/2022
55	Samson	Nehes Liah Bing	1° 2' 23.04"N	116° 52' 38.11"E	4.34	4.34	82.4	NL	14/02/2022
56	Siti Fatimah Wetuk	Nehes Liah Bing	1° 4' 9.41"N	116° 52' 17.26"E	1.80	1.80	34.2	NL	14/02/2022
57	Siti Jahra a	Nehes Liah Bing	1° 3' 33.92"N	116° 52' 52.18"E	2.47	2.47	46.9	NL	14/02/2022
58	Siti Jahra b	Nehes Liah Bing	1° 5' 4.38"N	116° 51' 27.99"E	2.15	2.15	40.9	NL	14/02/2022
59	Sri Rahayu	Nehes Liah Bing	1° 4' 12.27"N	116° 52' 21.57"E	1.78	1.78	33.8	NL	14/02/2022
60	Suryawati	Nehes Liah Bing	1° 2' 54.41"N	116° 52' 20.19"E	1.44	1.44	27.3	NL	14/02/2022
61	Tamber Hermadi	Nehes Liah Bing	1° 2' 42.82"N	116° 52' 14.83"E	1.23	1.23	23.5	NL	14/02/2022
62	Timotius Jum Lehat	Nehes Liah Bing	1° 5' 22.51"N	116° 52' 18.92"E	3.47	3.47	65.9	NL	14/02/2022
63	Tuk Ban	Nehes Liah Bing	1° 3' 42.71"N	116° 52' 21.59"E	2.60	2.60	49.4	NL	14/02/2022
64	Yaq Jie	Nehes Liah Bing	1° 3' 49.50"N	116° 50' 47.11"E	2.70	2.70	51.3	NL	14/02/2022
65	Yeang Goq a	Nehes Liah Bing	1° 2' 25.27"N	116° 52' 17.71"E	2.00	2.00	38.0	NL	14/02/2022
66	Yeang Goq b	Nehes Liah Bing	1° 2' 21.89"N	116° 52' 1.03"E	0.70	0.70	13.3	NL	14/02/2022
67	Yeang Goq c	Nehes Liah Bing	1° 3' 4.18"N	116° 52' 17.93"E	0.70	0.70	13.3	NL	14/02/2022
68	Yeang Goq d	Nehes Liah Bing	1° 2' 30.87"N	116° 52' 19.50"E	2.00	2.00	38.0	NL	14/02/2022
69	Yen Ping	Nehes Liah Bing	1° 3' 39.38"N	116° 51' 11.05"E	5.50	5.50	104.5	NL	14/02/2022
70	Yeremias Jung Ba	Nehes Liah Bing	1° 5' 16.55"N	116° 51' 23.27"E	9.50	9.50	180.5	NL	14/02/2022
71	Yunus Song	Nehes Liah Bing	1° 2' 18.47"N	116° 52' 37.72"E	3.04	3.04	57.7	NL	14/02/2022
72	Yurisna Ying	Nehes Liah Bing	1° 2' 28.08"N	116° 52' 18.65"E	2.00	2.00	38.0	NL	14/02/2022
73	Fransiskus Huwan	Nehes Liah Bing	1° 3' 21.45"N	116° 52' 28.29"E	4.36	4.36	82.9	NL	14/02/2022
74	Yusuf Rony	Nehes Liah Bing	1° 3' 12.84"N	116° 51' 34.80"E	0.89	0.89	16.9	NL	14/02/2022
75	Ahmad Riswan a	Nehes Liah Bing	1° 1' 53.23"N	116° 52' 51.68"E	2.21	2.21	42.0	NL	14/02/2022
76	Ahmad Riswan b	Nehes Liah Bing	1° 1' 54.72"N	116° 52' 44.97"E	2.09	2.09	39.8	NL	14/02/2022
77	Andreas Heang Tung b	Nehes Liah Bing	1° 4' 58.54"N	116° 52' 14.96"E	1.67	1.67	31.7	NL	14/02/2022
78	Andreas Heang Tung a	Nehes Liah Bing	1° 4' 53.33"N	116° 52' 14.18"E	1.32	1.32	25.1	NL	14/02/2022
79	Anselmu Nyuk Ban	Nehes Liah Bing	1° 4' 15.10"N	116° 51' 32.86"E	3.03	3.03	57.5	NL	14/02/2022
80	Ardiansyah	Nehes Liah Bing	1° 2' 23.92"N	116° 56' 8.94"E	1.72	1.72	32.6	NL	14/02/2022
81	Ari Susanto	Nehes Liah Bing	1° 5' 28.49"N	116° 52' 12.60"E	1.82	1.82	34.5	NL	14/02/2022

BSI Services Malaysia Sdn Bhd  
Co. Reg 200801003189  
Suite 29.01 Level 29.  
The Gardens North Tower.  
Mid Valley City.  
Lingkaran Syed Putra.  
59200 Kuala Lumpur

T: +6 03 9212 9638  
F: +6 03 9212 9639  
info.malaysia@bsigroup.com  
bsigroup.com/en-MY





Inspiring trust for a more resilient world.

Public

No.	Estate / Member	Location	GPS Reference		Area Summary (Ha)		Annual FFB Forecast (MT)	Liability Status (L/NL)	Date join (for ISH)
			Latitude (N)	Longitude (E)	Total Area to be Certified	Planted Area			
82	Arianti Lestari	Nehes Liah Bing	1° 4' 5.16"N	116° 52' 22.37"E	0.66	0.66	12.6	NL	14/02/2022
83	Armansyah a	Nehes Liah Bing	1° 4' 18.81"N	116° 51' 54.97"E	1.41	1.41	26.7	NL	14/02/2022
84	Armansyah b	Nehes Liah Bing	1° 4' 20.36"N	116° 51' 59.18"E	0.41	0.41	7.8	NL	14/02/2022
85	Awaluddin	Nehes Liah Bing	1° 2' 51.59"N	116° 51' 56.22"E	1.21	1.21	23.0	NL	14/02/2022
86	Bainah	Nehes Liah Bing	1° 2' 57.46"N	116° 51' 35.34"E	1.41	1.41	26.8	NL	14/02/2022
87	Beliah Kuh	Nehes Liah Bing	1° 5' 29.36"N	116° 51' 56.45"E	1.53	1.53	29.1	NL	14/02/2022
88	Benidiktus Bith	Nehes Liah Bing	1° 4' 22.00"N	116° 51' 56.44"E	1.20	1.20	22.8	NL	14/02/2022
89	Doni Bahtiar b	Nehes Liah Bing	1° 4' 4.26"N	116° 51' 38.01"E	0.58	0.58	11.1	NL	14/02/2022
90	Doni Bahtiar a	Nehes Liah Bing	1° 3' 6.40"N	116° 52' 34.86"E	2.49	2.49	47.3	NL	14/02/2022
91	Elan Song b	Nehes Liah Bing	1° 3' 17.27"N	116° 52' 11.83"E	4.83	4.83	91.8	NL	14/02/2022
92	Elan Song a	Nehes Liah Bing	1° 7' 11.15"N	116° 52' 36.62"E	1.24	1.24	23.5	NL	14/02/2022
93	Emjan Beang	Nehes Liah Bing	1° 3' 58.39"N	116° 52' 27.26"E	1.07	1.07	20.4	NL	14/02/2022
94	Fajaria	Nehes Liah Bing	1° 2' 10.03"N	116° 52' 16.84"E	2.00	2.00	38.0	NL	14/02/2022
95	Geah Juk	Nehes Liah Bing	1° 4' 34.85"N	116° 52' 16.95"E	3.00	3.00	57.0	NL	14/02/2022
96	Hairul	Nehes Liah Bing	1° 2' 40.66"N	116° 52' 45.93"E	6.50	6.50	123.5	NL	14/02/2022
97	Helena Hewun	Nehes Liah Bing	1° 4' 45.98"N	116° 52' 28.91"E	1.72	1.72	32.7	NL	14/02/2022
98	Hendrikus Nin Jie	Nehes Liah Bing	1° 4' 20.58"N	116° 51' 32.48"E	3.45	3.45	65.6	NL	14/02/2022
99	Hermayanti b	Nehes Liah Bing	1° 1' 55.12"N	116° 52' 42.80"E	2.13	2.13	40.5	NL	14/02/2022
100	Hermayanti a	Nehes Liah Bing	1° 1' 54.22"N	116° 52' 47.21"E	1.90	1.90	36.0	NL	14/02/2022
101	Hilda Siti b	Nehes Liah Bing	1° 2' 27.07"N	116° 51' 52.46"E	1.74	1.74	33.1	NL	14/02/2022
102	Hilda Siti a	Nehes Liah Bing	1° 2' 30.00"N	116° 51' 52.92"E	2.79	2.79	52.9	NL	14/02/2022
103	Hilda Siti c	Nehes Liah Bing	1° 2' 32.31"N	116° 51' 53.09"E	2.05	2.05	39.0	NL	14/02/2022
104	Ignatius Ing Dom b	Nehes Liah Bing	1° 4' 42.16"N	116° 52' 29.12"E	2.42	2.42	46.0	NL	14/02/2022
105	Ignatius Ing Dom a	Nehes Liah Bing	1° 4' 58.76"N	116° 52' 28.34"E	1.58	1.58	30.0	NL	14/02/2022
106	Johan Wilsong	Nehes Liah Bing	1° 4' 20.78"N	116° 51' 39.69"E	2.70	2.70	51.3	NL	14/02/2022
107	Jonisius	Nehes Liah Bing	1° 5' 5.97"N	116° 51' 44.26"E	3.07	3.07	58.3	NL	14/02/2022
108	Julius Junatan b	Nehes Liah Bing	1° 5' 25.03"N	116° 52' 25.80"E	1.04	1.04	19.8	NL	14/02/2022
109	Julius Junatan a	Nehes Liah Bing	1° 5' 38.31"N	116° 52' 6.82"E	2.05	2.05	38.9	NL	14/02/2022
110	Kanisius Indra Blawing b	Nehes Liah Bing	1° 4' 57.44"N	116° 52' 17.82"E	1.62	1.62	31.7	NL	14/02/2022
111	Kanisius Indra Blawing a	Nehes Liah Bing	1° 4' 11.93"N	116° 51' 36.04"E	1.62	1.62	30.9	NL	14/02/2022
112	Kavita Klea	Nehes Liah Bing	1° 5' 18.32"N	116° 52' 0.75"E	2.71	2.71	51.5	NL	14/02/2022
113	Khusnul Khotimah	Nehes Liah Bing	1° 3' 7.98"N	116° 52' 38.00"E	1.60	1.60	30.4	NL	14/02/2022
114	Klea Song Lee	Nehes Liah Bing	1° 2' 8.78"N	116° 56' 25.73"E	4.00	4.00	76.0	NL	14/02/2022
115	Korentius Ji	Nehes Liah Bing	1° 4' 17.50"N	116° 51' 31.66"E	2.09	2.09	39.7	NL	14/02/2022
116	Kristiani Icha b	Nehes Liah Bing	1° 4' 36.62"N	116° 52' 24.59"E	0.66	0.66	12.5	NL	14/02/2022
117	Kristiani Icha a	Nehes Liah Bing	1° 3' 57.49"N	116° 52' 24.77"E	3.22	3.22	61.2	NL	14/02/2022
118	Kristiani Icha c	Nehes Liah Bing	1° 3' 42.17"N	116° 51' 46.03"E	0.26	0.26	5.0	NL	14/02/2022
119	Kristiani Icha d	Nehes Liah Bing	1° 2' 8.23"N	116° 56' 38.66"E	3.92	3.92	74.5	NL	14/02/2022
120	Kristianus Mie	Nehes Liah Bing	1° 2' 11.15"N	116° 56' 28.08"E	3.00	3.00	57.0	NL	14/02/2022

BSI Services Malaysia Sdn Bhd  
Co. Reg 200801003189  
Suite 29.01 Level 29.  
The Gardens North Tower.  
Mid Valley City.  
Lingkaran Syed Putra.  
59200 Kuala Lumpur

T: +6 03 9212 9638  
F: +6 03 9212 9639  
info.malaysia@bsigroup.com  
bsigroup.com/en-MY





Inspiring trust for a more resilient world.

Public

No.	Estate / Member	Location	GPS Reference		Area Summary (Ha)		Annual FFB Forecast (MT)	Liability Status (L/NL)	Date join (for ISH)
			Latitude (N)	Longitude (E)	Total Area to be Certified	Planted Area			
121	Kung Beang b	Nehes Liah Bing	1° 2' 34.10"N	116° 52' 20.67"E	2.10	2.10	39.9	NL	14/02/2022
122	Kung Beang a	Nehes Liah Bing	1° 2' 3.34"N	116° 52' 38.84"E	2.00	2.00	38.0	NL	14/02/2022
123	Kung Beang c	Nehes Liah Bing	1° 2' 16.10"N	116° 52' 20.08"E	1.00	1.00	19.0	NL	14/02/2022
124	Lara Sumarya	Nehes Liah Bing	1° 4' 49.76"N	116° 52' 28.83"E	1.74	1.74	33.0	NL	14/02/2022
125	Le Ing a	Nehes Liah Bing	1° 3' 57.51"N	116° 51' 42.98"E	2.73	2.73	51.9	NL	14/02/2022
126	Le Ing b	Nehes Liah Bing	1° 3' 57.02"N	116° 51' 50.40"E	1.72	1.72	32.7	NL	14/02/2022
127	Lerung Adjang a	Nehes Liah Bing	1° 4' 0.57"N	116° 51' 53.83"E	1.87	1.87	35.6	NL	14/02/2022
128	Lerung Adjang b	Nehes Liah Bing	1° 4' 43.71"N	116° 52' 16.39"E	2.40	2.40	48.0	NL	14/02/2022
129	Lerung Adjang c	Nehes Liah Bing	1° 4' 3.04"N	116° 51' 53.44"E	1.67	1.67	31.6	NL	14/02/2022
130	Liah Mad	Nehes Liah Bing	1° 3' 47.79"N	116° 51' 54.15"E	0.90	0.90	17.1	NL	14/02/2022
131	Lui Wea	Nehes Liah Bing	1° 2' 37.00"N	116° 52' 40.37"E	4.13	4.13	78.4	NL	14/02/2022
132	Marcelino Edo Ba Beang	Nehes Liah Bing	1° 2' 12.46"N	116° 52' 22.33"E	2.00	2.00	38.0	NL	14/02/2022
133	Margaretha Wung	Nehes Liah Bing	1° 4' 58.79"N	116° 51' 48.91"E	1.05	1.05	19.9	NL	14/02/2022
134	Mariana Jemaq	Nehes Liah Bing	1° 5' 40.26"N	116° 52' 6.35"E	2.44	2.44	46.4	NL	14/02/2022
135	Markus Penoaq Jie	Nehes Liah Bing	1° 4' 24.04"N	116° 51' 34.37"E	1.85	1.85	35.2	NL	14/02/2022
136	Marselina Semdan	Nehes Liah Bing	1° 3' 55.31"N	116° 51' 56.62"E	2.36	2.36	44.8	NL	14/02/2022
137	Marta Long Seng b	Nehes Liah Bing	1° 5' 12.76"N	116° 52' 21.41"E	2.00	2.00	37.9	NL	14/02/2022
138	Marta Long Seng a	Nehes Liah Bing	1° 5' 15.63"N	116° 52' 19.19"E	2.15	2.15	40.8	NL	14/02/2022
139	Marten b	Nehes Liah Bing	1° 2' 4.86"N	116° 52' 45.90"E	3.57	3.57	67.8	NL	14/02/2022
140	Marten a	Nehes Liah Bing	1° 2' 15.95"N	116° 52' 26.46"E	3.06	3.06	58.2	NL	14/02/2022
141	Matias Yoq	Nehes Liah Bing	1° 4' 54.11"N	116° 52' 28.77"E	2.75	2.75	52.2	NL	14/02/2022
142	Matius Wing Hat	Nehes Liah Bing	1° 4' 33.57"N	116° 52' 13.30"E	4.00	4.00	76.0	NL	14/02/2022
143	Meang Hong	Nehes Liah Bing	1° 4' 55.89"N	116° 51' 41.53"E	2.61	2.61	49.5	NL	14/02/2022
144	Moses Mesngin a	Nehes Liah Bing	1° 4' 34.00"N	116° 52' 2.72"E	1.50	1.50	28.5	NL	14/02/2022
145	Moses Mesngin b	Nehes Liah Bing	1° 3' 36.96"N	116° 51' 47.16"E	1.03	1.03	19.6	NL	14/02/2022
146	Moses Mesngin c	Nehes Liah Bing	1° 2' 54.24"N	116° 52' 36.61"E	3.20	3.20	60.8	NL	14/02/2022
147	Muhammad Tang a	Nehes Liah Bing	1° 1' 53.73"N	116° 52' 49.44"E	2.16	2.16	41.0	NL	14/02/2022
148	Muhammad Tang b	Nehes Liah Bing	1° 1' 52.72"N	116° 52' 53.92"E	2.23	2.23	42.3	NL	14/02/2022
149	Natalia Kelea	Nehes Liah Bing	1° 4' 31.03"N	116° 52' 24.85"E	1.57	1.57	29.7	NL	14/02/2022
150	Natalis Candra Jie b	Nehes Liah Bing	1° 4' 13.40"N	116° 51' 39.97"E	1.27	1.27	24.2	NL	14/02/2022
151	Natalis Candra Jie a	Nehes Liah Bing	1° 5' 3.80"N	116° 52' 15.90"E	1.23	1.23	23.3	NL	14/02/2022
152	Nea Song b	Nehes Liah Bing	1° 4' 16.88"N	116° 51' 46.92"E	1.66	1.66	31.6	NL	14/02/2022
153	Nea Song a	Nehes Liah Bing	1° 4' 17.21"N	116° 51' 40.75"E	1.60	1.60	30.4	NL	14/02/2022
154	Nea Song c	Nehes Liah Bing	1° 3' 54.47"N	116° 51' 50.04"E	1.20	1.20	22.8	NL	14/02/2022
155	Nengun Liq a	Nehes Liah Bing	1° 2' 34.22"N	116° 52' 44.71"E	1.71	1.71	32.4	NL	14/02/2022
156	Nengun Liq b	Nehes Liah Bing	1° 2' 28.74"N	116° 52' 44.00"E	1.53	1.53	29.1	NL	14/02/2022
157	Nengun Liq c	Nehes Liah Bing	1° 3' 23.29"N	116° 52' 9.09"E	1.96	1.96	37.2	NL	14/02/2022
158	Nengun Liq d	Nehes Liah Bing	1° 3' 59.08"N	116° 51' 36.95"E	2.20	2.20	41.8	NL	14/02/2022
159	Penoq Beang a	Nehes Liah Bing	1° 3' 50.78"N	116° 51' 56.08"E	1.08	1.08	20.4	NL	14/02/2022

BSI Services Malaysia Sdn Bhd  
Co. Reg 200801003189  
Suite 29.01 Level 29.  
The Gardens North Tower.  
Mid Valley City.  
Lingkaran Syed Putra.  
59200 Kuala Lumpur

T: +6 03 9212 9638  
F: +6 03 9212 9639  
info.malaysia@bsigroup.com  
bsigroup.com/en-MY



Public

No.	Estate / Member	Location	GPS Reference		Area Summary (Ha)		Annual FFB Forecast (MT)	Liability Status (L/NL)	Date join (for ISH)
			Latitude (N)	Longitude (E)	Total Area to be Certified	Planted Area			
160	Penoq Beang b	Nehes Liah Bing	1° 3' 58.33"N	116° 52' 2.94"E	2.48	2.48	47.2	NL	14/02/2022
161	Rahel Endang Biring Allo	Nehes Liah Bing	1° 4' 44.75"N	116° 52' 12.93"E	2.80	2.80	53.2	NL	14/02/2022
162	Ratnawati	Nehes Liah Bing	1° 3' 19.81"N	116° 52' 15.68"E	2.03	2.03	38.6	NL	14/02/2022
163	Ribka	Nehes Liah Bing	1° 2' 47.85"N	116° 52' 32.54"E	0.75	0.75	14.3	NL	14/02/2022
164	Rosalina Long	Nehes Liah Bing	1° 3' 52.31"N	116° 51' 48.58"E	1.20	1.20	22.9	NL	14/02/2022
165	Rufina b	Nehes Liah Bing	1° 3' 55.26"N	116° 51' 26.14"E	3.52	3.52	66.8	NL	14/02/2022
166	Rufina a	Nehes Liah Bing	1° 3' 57.83"N	116° 51' 29.92"E	1.16	1.16	22.0	NL	14/02/2022
167	Sal Nurhayati	Nehes Liah Bing	1° 4' 6.64"N	116° 52' 20.81"E	0.97	0.97	18.5	NL	14/02/2022
168	Sam Wung	Nehes Liah Bing	1° 2' 12.43"N	116° 56' 11.43"E	2.70	2.70	51.3	NL	14/02/2022
169	Saut Juniar Ompusunggu b	Nehes Liah Bing	1° 2' 18.90"N	116° 52' 22.33"E	2.40	2.40	45.6	NL	14/02/2022
170	Saut Juniar Ompusunggu a	Nehes Liah Bing	1° 2' 7.02"N	116° 52' 34.19"E	1.80	1.80	34.2	NL	14/02/2022
171	Sharyfa Alona b	Nehes Liah Bing	1° 4' 8.69"N	116° 51' 38.04"E	0.79	0.79	15.1	NL	14/02/2022
172	Sharyfa Alona a	Nehes Liah Bing	1° 4' 11.62"N	116° 51' 43.62"E	2.22	2.22	42.2	NL	14/02/2022
173	Sri Agung Widiono	Nehes Liah Bing	1° 3' 19.18"N	116° 52' 3.79"E	1.96	1.96	37.2	NL	14/02/2022
174	Sri Rahayu	Nehes Liah Bing	1° 3' 17.69"N	116° 52' 8.00"E	2.10	2.10	39.9	NL	14/02/2022
175	Sri Tunggal Widiawan	Nehes Liah Bing	1° 3' 23.10"N	116° 52' 14.09"E	1.90	1.90	36.2	NL	14/02/2022
176	Suhari a	Nehes Liah Bing	1° 4' 8.72"N	116° 52' 21.41"E	1.38	1.38	26.1	NL	14/02/2022
177	Suhari b	Nehes Liah Bing	1° 3' 1.32"N	116° 52' 30.17"E	1.99	1.99	37.8	NL	14/02/2022
178	Sutini	Nehes Liah Bing	1° 5' 28.53"N	116° 52' 5.09"E	1.73	1.73	32.9	NL	14/02/2022
179	Thomas Juk	Nehes Liah Bing	1° 3' 58.07"N	E116° 51' 33.25"E	0.87	0.87	16.6	NL	14/02/2022
180	Timotius Teguen Yel	Nehes Liah Bing	1° 7' 18.02"N	116° 53' 2.65"E	4.42	4.42	83.9	NL	14/02/2022
181	Trina Yeang	Nehes Liah Bing	1° 2' 14.08"N	116° 52' 30.52"E	4.05	4.05	77.0	NL	14/02/2022
182	Tuk Bay	Nehes Liah Bing	1° 5' 17.10"N	116° 51' 51.55"E	3.14	3.14	59.6	NL	14/02/2022
183	Tung Beq a	Nehes Liah Bing	1° 4' 23.71"N	116° 51' 45.87"E	0.29	0.29	5.6	NL	14/02/2022
184	Tung Beq b	Nehes Liah Bing	1° 4' 22.52"N	116° 51' 44.97"E	0.95	0.95	18.0	NL	14/02/2022
185	Veronika Doi	Nehes Liah Bing	1° 4' 34.94"N	116° 52' 7.38"E	2.67	2.67	50.8	NL	14/02/2022
186	Yani Yeang	Nehes Liah Bing	1° 2' 28.89"N	116° 52' 28.28"E	3.66	3.66	69.5	NL	14/02/2022
187	Yoga Prima Jaya	Nehes Liah Bing	1° 3' 59.66"N	116° 51' 51.23"E	1.38	1.38	26.2	NL	14/02/2022
188	Yohana Fransiska Yeang Bay	Nehes Liah Bing	1° 4' 42.51"N	116° 52' 2.47"E	2.77	2.77	52.7	NL	14/02/2022
189	Bit Tot	Nehes Liah Bing	1° 4' 24.13"N	116° 51' 49.38"E	1.80	1.80	34.3	NL	14/02/2022
190	Yusuf a	Nehes Liah Bing	1° 4' 41.37"N	116° 51' 56.98"E	1.62	1.62	30.8	NL	14/02/2022
191	Yusuf b	Nehes Liah Bing	1° 5' 14.04"N	116° 52' 5.64"E	2.25	2.25	42.8	NL	14/02/2022
192	Yusuf c	Nehes Liah Bing	1° 5' 11.26"N	116° 52' 10.19"E	4.12	4.12	78.2	NL	14/02/2022
<b>TOTAL</b>					426.13	426.13	8,100.00		

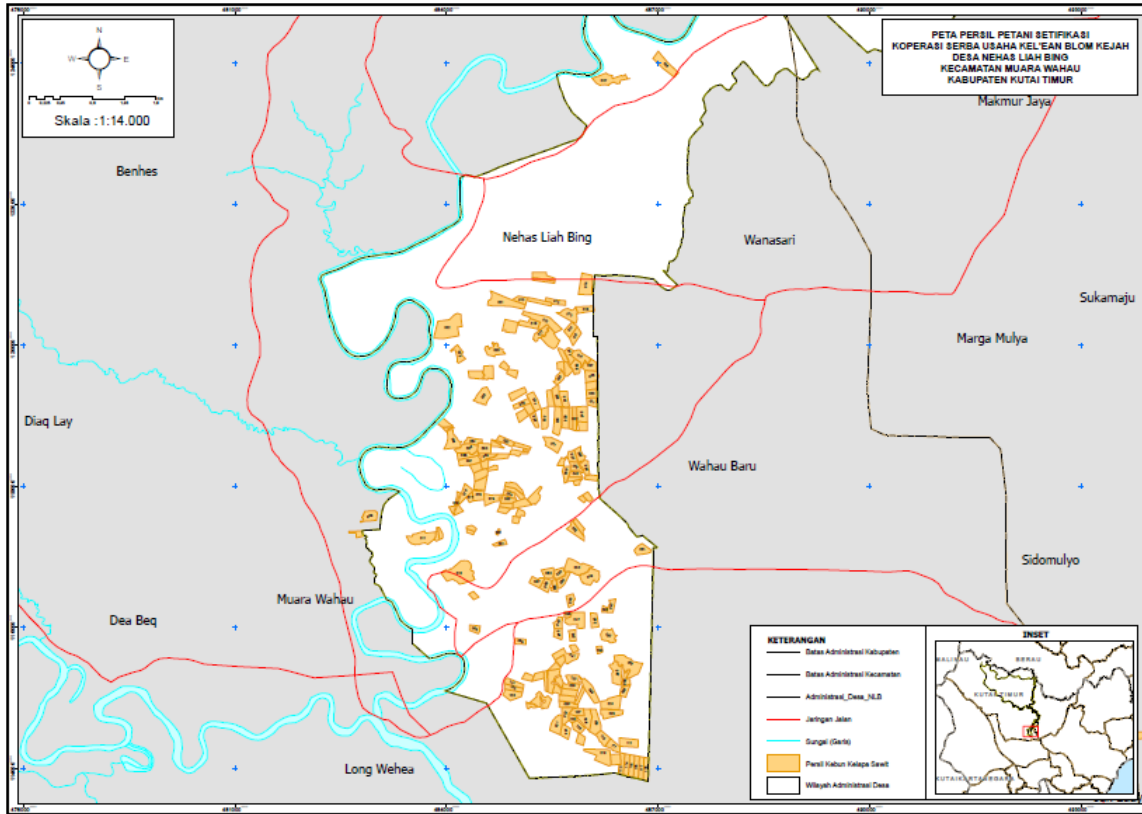
Note: L – with Liability; NL – No Liability

The members to this certification does not involve new development. Consequently, there is no NPP process.

Public

To navigate the details of the RaCP, more information in regard to the potential liability can be found from RSPO website (<https://www.rspo.org/certification/remediation-and-compensation/racp-tracker>)

### 3. Location maps of the ISH group



BSI Services Malaysia Sdn. Bhd. is accredited to provide independent third-party RSPO P&C and RSPO SCCS certification services. BSI Malaysia is a subsidiary of BSI Group, a Royal Charter Company. BSI is the world’s Trusted brand in providing business improvement solutions with more than 86,000 clients in over 193 countries. BSI’s mission is to share knowledge, innovation and best practice to help people and organizations make excellence a habit. BSI is the U.K.’s National Standards Body. BSI Services Malaysia Sdn. Bhd. has RSPO affiliate offices in Indonesia, Australia, China and India.

The audit team for this audit will consists the following:

Audit Team	Role/Area of Requirement	Qualification and Experience
Nanang Rusmana	Team Member Auditing Plantation best management practices, Worker welfare, Worker consultation.	<b>Education:</b> Holds a Bachelor Degree of Forestry from Bogor Agricultural University (IPB) <b>Work Experience:</b> 5 years working experience in palm oil industry as SHE Assistant at PT. Astra Agro Lestari Tbk. 3 years working experience in mining industry as Environment Coordinator and SHE Coordinator with PT. Kapuas Prima Coal Group. 6 years working experience as RSPO/ISPO auditor <b>Training attended:</b> Completed ISO 9001:2015 Lead Auditor Course, ISPO Auditor Course, ISO 14001:2015 Lead Auditor Course,

Public

		<p>ISO 45001:2018 Lead Auditor Course, Endorsed RSPO P&amp;C Lead Auditor Course, Endorsed RSPO Supply Chain Certification Lead Auditor Course, SMK3 Auditor Course, HCV Assessor Course, General OHS Expert Course, SMETA Requirements training.</p> <p><b>Language proficiency:</b> Fluent in Bahasa Indonesia and English</p>
Eko Prastio Ramadhan	<p>Team Member</p> <p>Auditing Environmental management, GHG, HCV, Impact Assessment.</p>	<p><b>Education:</b> Holds a Bachelor Degree in Forest Resources Conservation and Ecotourism from Forestry Faculty, Bogor Agricultural University (IPB).</p> <p><b>Work Experience:</b> Over 4 years of working experience in biodiversity officer with Birdlife Indonesia and consultant with PT Inoa Konsultindo. Over 2½ years of working experience in palm oil estate with PT Salim Ivomas Pratama Tbk and Capitol Plantation Group implementing sustainability. Over 4½ years of working experience as RSPO P&amp;C Certification Program Manager and auditor covering standard such as RSPO P&amp;C, RSPO SCCS, ISPO, ISO 9001 and ISO 14001.</p> <p><b>Training attended:</b> Completed ISO 14001:2015 Lead Auditor Course, Endorsed RSPO P&amp;C Lead Auditor Course, Social Impact Assessment Training, Endorsed RSPO SCC Auditor Lead Auditor Course, ISPO Auditor Batch 19 Training, ISO 9001 Lead Auditor Course and Identification of HCV Areas Training.</p> <p><b>Language proficiency:</b> Fluent in Bahasa Indonesia and English</p>
Edy Widodo	<p>Team Member</p> <p>Auditing Social aspects, Consultation with stakeholders, Organization policies, Continuous Improvement.</p>	<p><b>Education:</b> Holds a Bachelor Degree majoring Agricultural Technology from University of Padjadjaran, Bandung.</p> <p><b>Work Experience:</b> 8 years working experience in palm oil industry as Agronomist and Assistant Manager in various companies. 9 year working experience as RSPO/ISPO auditor.</p> <p><b>Training attended:</b> Completed ISO 9001 Lead Auditor Course, ISPO endorsed auditor course, Understanding ISO 14001 training, Auditing ISO 14001: 2004 training, Endorsed RSPO Supply Chain Certification Lead Auditor Course, Endorsed RSPO P&amp;C Lead Auditor Course, SMETA Requirements Training, Introductory Course for High Conservation Value and High Carbon Stock (HCS) in Oil Palm Plantation.</p> <p><b>Language proficiency:</b> Fluent in Bahasa Indonesia and English</p>
Mujinius Jalaraya	<p>Team Member</p> <p>Auditing Health and safety, Organization commitment, Legal Compliance, Long-term economic planning, Internal Control System.</p>	<p><b>Education:</b> Holds a Bachelor Degree majoring in Forest Resources Conservation and Ecotourism from Bogor Agricultural University (IPB).</p> <p><b>Work Experience:</b> 6 years working experience in palm oil plantations as SHE Assistant at PT. Astra Agro Lestari Tbk and Sustainability Supervisor at Teladan Prima Group. 8 years working experience as RSPO Auditor / Lead Auditor.</p> <p><b>Training attended:</b> Completed ISO 9001 Lead Auditor course, ISPO Lead Auditor course, Endorsed RSPO P&amp;C Lead Auditor course, Endorsed RSPO SCCS Lead Auditor course, Introductory Course for High Conservation Value and High Carbon Stock (HCS) in Oil Palm Plantation, ISO 14001 Internal Auditor Training, ISO 45001 Lead Auditor course, OHS Expert Training, SMETA Requirements Training</p> <p><b>Language proficiency:</b> Fluent in Bahasa Indonesia and English</p>



Public

In preparation for the assessment, related stakeholders are invited to provide written input regarding this assessment by commenting on related aspects to the certification unit. Topics that you may wish to comment on are as follows but not limited to:

- Environmental Protection & conservation
- Human rights & workers welfare
- Opportunity for employment
- Company approach to community development
- Your relationship with the company
- Participation in decision making
- Free, prior and informed consent
- Suggestion for improvement

Comments that are received within 30 days from the date of this letter will be considered in the Assessment. Please include the following details in case we may need to contact you for clarification or follow-up on any issue raised by you.

Name: ..... Email: .....  
Position: ..... Phone Number: .....

If you wish your comments to be treated confidentially or to remain anonymous, please mark your reply "CONFIDENTIAL". You may direct your comments to:

**Scheme Manager:**

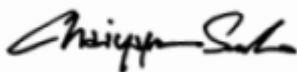
Dr. Chaiyaporn Seekao  
BSI Services Malaysia Sdn. Bhd.  
Suite 29.01 Level 29 The Gardens North  
Tower, Mid Valley City Lingkaran Syed Putra  
59200 Kuala Lumpur  
Federal Territory, Malaysia  
Faks : +603 9212 9639  
Email : [Chaiyaporn.Seekao@bsigroup.com](mailto:Chaiyaporn.Seekao@bsigroup.com)

**AND / OR****Auditee:**

Mr. Fransiskus Heluy  
Koperasi Serba Usaha Kel'ean Blom Kejah  
Bahlang Street No.27, RT005, Nehes Liah Bing  
Village, Muara Wahau District, Kutai Timur Regency,  
Kalimantan Timur Province, Indonesia  
Fax : -  
Email : [Ksukleanblomkejah@gmail.com](mailto:Ksukleanblomkejah@gmail.com)

We thank you and appreciate for your comments.

Yours sincerely,



.....  
Chaiyaporn Seekao, Ph.D.  
Technical and Compliance Manager - Food (RSPO)  
BSI Services Malaysia Sdn Bhd