

Public

Date: 22 August 2022

Public Notification: RSPO Initial Certification MS B Audit of Koperasi Sawit Usaha Tani Sejahtera (RSPO Membership: 1-0393-22-000-00)

Dear Stakeholders,

This is to inform that Koperasi Sawit Usaha Tani Sejahtera with RSPO membership number (1-0393-22-000-00) had appointed BSI Services Malaysia Sdn Bhd ("BSI Malaysia") to conduct the Initial Certification (Eligibility, MSA, MSB) Audit located at Kalimantan Timur Province. The audit will be conducted from 17-19 October 2022 against the requirements of RSPO Independent Smallholder Standard – Indonesia National Interpretation endorsed on 14 February 2022. The supply chain model is Identity Preserved.

RSPO PO ID number of the Koperasi Sawit Usaha Tani Sejahtera is: RSPO_PO1000014565

Organization background: Koperasi Sawit Usaha Tani Sejahtera located in Nehes Liah Bing village, Muara Wahau district, Kutai Timur regency, Kalimantan Timur Province, Indonesia. The organization Koperasi Sawit Usaha Tani Sejahtera was established 14 November 2002. The organization comprise of 121 smallholder managing oil palm plantation of 203 land parcels with total area of 440.69 Ha. The smallholder member of Koperasi Sawit Usaha Tani Sejahtera gets access to training and mentoring from GIZ and Kutai Timur Regency Government. The member of the organization committed to support the production of sustainable palm oil production.

1. The information of the production data to be assessed are as follows:

Koperasi Sawit Usaha Tani Sejahtera		
Independent Smallholder Group Name		Koperasi Sawit Usaha Tani Sejahtera
Number of group member		121 smallholder members with 203 land parcels
Address / Location		Long Bau Hamlet, Nehes Liah Bing Village, Muara Wahau District, Kutai Timur Regency, Kalimantan Timur Province, Indonesia
GPS Reference (in degree. minute & second)	Latitude	1° 5' 39.90" N
	Longitude	116° 51' 41.90" E
Forecast Annual Output (MT)	CPO	1,965.49 MT
	PK	491.37 MT
	FFB	9,827.39 MT

2. The Smallholders Member details are as follows:

No.	Estate / Member	Location	GPS Reference		Area Summary (Ha)		Annual FFB Forecast (MT)	Liability Status (L/NL)	Date join (for ISH)
			Latitude (S)	Longitude (E)	Total Area to be Certified	Planted Area			
001	Akhmad. S a	Nehes Liah Bing	N1° 5' 52.215"	E116° 52' 22.173"	1.99	1.99	22.83	NL	16/02/2022
002	Akhmad. S b	Nehes Liah Bing	N1° 6' 19.683"	E116° 52' 29.555"	2.04	2.04	22.26	NL	16/02/2022



Inspiring trust for a more resilient world.

Public

No.	Estate / Member	Location	GPS Reference		Area Summary (Ha)		Annual FFB Forecast (MT)	Liability Status (L/NL)	Date join (for ISH)
			Latitude (S)	Longitude (E)	Total Area to be Certified	Planted Area			
003	Akhmad. S c	Nehes Liah Bing	N1° 6' 16.148"	E116° 52' 46.270"	2.76	2.76	19.94	NL	16/02/2022
004	Aloysius Tebayak Moron a	Nehes Liah Bing	N1° 5' 54.237"	E116° 52' 4.402"	2.00	2.00	19.17	NL	16/02/2022
005	Aloysius Tebayak Moron b	Nehes Liah Bing	N1° 6' 0.988"	E116° 52' 9.555"	1.13	1.13	19.04	NL	16/02/2022
006	Aloysius Tebayak Moron c	Nehes Liah Bing	N1° 7' 5.080"	E116° 52' 48.415"	0.97	0.97	21.03	NL	16/02/2022
007	Aloysius Tebayak Moron d	Nehes Liah Bing	N1° 7' 36.737"	E116° 53' 43.106"	2.11	2.11	21.61	NL	16/02/2022
008	Aloysius Tebayak Moron e	Nehes Liah Bing	N1° 5' 55.379"	E116° 52' 8.335"	2.45	2.45	22.52	NL	16/02/2022
009	Aloysius Tebayak Moron f	Nehes Liah Bing	N1° 6' 2.155"	E116° 52' 22.606"	2.09	2.09	21.75	NL	16/02/2022
010	Amania a	Nehes Liah Bing	N1° 6' 38.995"	E116° 52' 50.647"	2.32	2.32	20.69	NL	16/02/2022
011	Amania b	Nehes Liah Bing	N1° 7' 23.196"	E116° 53' 52.305"	1.94	1.94	21.02	NL	16/02/2022
012	Amir. A a	Nehes Liah Bing	N1° 5' 42.418"	E116° 50' 55.108"	2.26	2.26	21.18	NL	16/02/2022
013	Amir. A b	Nehes Liah Bing	N1° 6' 16.525"	E116° 52' 29.507"	2.05	2.05	22.18	NL	16/02/2022
014	Amir. A c	Nehes Liah Bing	N1° 8' 10.699"	E116° 54' 12.088"	2.09	2.09	20.66	NL	16/02/2022
015	Andarias Jalung a	Nehes Liah Bing	N1° 6' 8.041"	E116° 51' 50.674"	1.78	1.78	20.22	NL	16/02/2022
016	Andarias Jalung b	Nehes Liah Bing	N1° 6' 4.431"	E116° 51' 55.311"	1.67	1.67	21.56	NL	16/02/2022
017	Anwar a	Nehes Liah Bing	N1° 6' 42.251"	E116° 52' 51.060"	2.02	2.02	23.75	NL	16/02/2022
018	Anwar b	Nehes Liah Bing	N1° 6' 59.671"	E116° 53' 13.873"	2.00	2.00	23.94	NL	16/02/2022
019	Arbaini	Nehes Liah Bing	N1° 7' 54.500"	E116° 54' 1.181"	2.53	2.53	22.76	NL	16/02/2022
020	Asri	Nehes Liah Bing	N1° 6' 6.740"	E116° 51' 59.519"	3.14	3.14	22.92	NL	16/02/2022
021	Aswat	Nehes Liah Bing	N1° 8' 4.744"	E116° 54' 5.960"	1.97	1.97	21.93	NL	16/02/2022
022	Basran	Nehes Liah Bing	N1° 6' 5.618"	E116° 52' 15.788"	1.81	1.81	23.82	NL	16/02/2022
023	Darmawan	Nehes Liah Bing	N1° 6' 5.475"	E116° 52' 22.961"	1.85	1.85	23.48	NL	16/02/2022
024	Darius Rawi a	Nehes Liah Bing	N1° 6' 4.704"	E116° 51' 35.484"	0.48	0.48	19.87	NL	16/02/2022
025	Darius Rawi b	Nehes Liah Bing	N1° 6' 12.868"	E116° 52' 47.321"	1.92	1.92	23.71	NL	16/02/2022
026	Darius Rawi c	Nehes Liah Bing	N1° 6' 59.725"	E116° 53' 16.453"	2.05	2.05	23.32	NL	16/02/2022
027	Dwi Harto a	Nehes Liah Bing	N1° 5' 46.949"	E116° 52' 16.580"	3.17	3.17	22.65	NL	16/02/2022
028	Dwi Harto b	Nehes Liah Bing	N1° 7' 28.635"	E116° 53' 24.673"	2.57	2.57	23.30	NL	16/02/2022

BSI Services Malaysia Sdn Bhd
Co. Reg 200801003189
Suite 29.01 Level 29.
The Gardens North Tower.
Mid Valley City.
Lingkaran Syed Putra.
59200 Kuala Lumpur

T: +6 03 9212 9638
F: +6 03 9212 9639
info.malaysia@bsigroup.com
bsigroup.com/en-MY





Inspiring trust for a more resilient world.

Public

No.	Estate / Member	Location	GPS Reference		Area Summary (Ha)		Annual FFB Forecast (MT)	Liability Status (L/NL)	Date join (for ISH)
			Latitude (S)	Longitude (E)	Total Area to be Certified	Planted Area			
029	Eflinawati Len. U	Nehes Liah Bing	N1° 6' 0.195"	E116° 50' 10.679"	2.00	2.00	24.00	NL	16/02/2022
030	Elisabeth Lempung Ngau a	Nehes Liah Bing	N1° 5' 55.974"	E116° 51' 52.710"	1.90	1.90	23.97	NL	16/02/2022
031	Elisabeth Lempung Ngau b	Nehes Liah Bing	N1° 5' 56.884"	E116° 51' 46.571"	1.97	1.97	23.05	NL	16/02/2022
032	Herman	Nehes Liah Bing	N1° 6' 22.882"	E116° 52' 10.699"	1.25	1.25	23.10	NL	16/02/2022
033	Husain. K a	Nehes Liah Bing	N1° 6' 11.931"	E116° 52' 15.635"	1.99	1.99	22.88	NL	16/02/2022
034	Husain. K b	Nehes Liah Bing	N1° 5' 58.437"	E116° 51' 34.212"	1.68	1.68	22.79	NL	16/02/2022
035	Husain. K c	Nehes Liah Bing	N1° 7' 27.473"	E116° 53' 52.329"	1.94	1.94	23.4	NL	16/02/2022
036	Iskandar	Nehes Liah Bing	N1° 6' 6.818"	E116° 50' 49.313"	7.50	7.50	22.40	NL	16/02/2022
037	Jaenap	Nehes Liah Bing	N1° 5' 57.309"	E116° 50' 8.230"	2.00	2.00	24.00	NL	16/02/2022
038	Jalung Bilung a	Nehes Liah Bing	N1° 5' 50.038"	E116° 52' 45.449"	1.94	1.94	23.41	NL	16/02/2022
039	Jalung Bilung b	Nehes Liah Bing	N1° 7' 28.463"	E116° 53' 32.944"	1.95	1.95	23.37	NL	16/02/2022
040	Jamaluddin a	Nehes Liah Bing	N1° 5' 43.781"	E116° 51' 13.305"	1.82	1.82	22.30	NL	16/02/2022
041	Jamaluddin b	Nehes Liah Bing	N1° 5' 50.245"	E116° 52' 36.283"	2.29	2.29	20.88	NL	16/02/2022
042	Jamaluddin c	Nehes Liah Bing	N1° 7' 25.991"	E116° 54' 1.894"	1.98	1.98	21.73	NL	16/02/2022
043	Julianto a	Nehes Liah Bing	N1° 6' 22.638"	E116° 52' 46.175"	3.50	3.50	21.89	NL	16/02/2022
044	Julianto b	Nehes Liah Bing	N1° 7' 13.984"	E116° 53' 22.737"	1.99	1.99	22.87	NL	16/02/2022
045	Kurnia Wanda	Nehes Liah Bing	N1° 5' 58.911"	E116° 52' 15.571"	1.99	1.99	21.72	NL	16/02/2022
046	Landong a	Nehes Liah Bing	N1° 6' 5.444"	E116° 51' 42.432"	2.85	2.85	21.83	NL	16/02/2022
047	Landong b	Nehes Liah Bing	N1° 5' 48.231"	E116° 52' 6.392"	4.19	4.19	22.91	NL	16/02/2022
048	Landong c	Nehes Liah Bing	N1° 6' 17.048"	E116° 52' 22.569"	4.79	4.79	22.52	NL	16/02/2022
049	Landong d	Nehes Liah Bing	N1° 6' 9.058"	E116° 52' 53.737"	2.38	2.38	21.12	NL	16/02/2022
050	M. Gimam Effendi	Nehes Liah Bing	N1° 7' 4.388"	E116° 52' 40.691"	0.83	0.83	20.28	NL	16/02/2022
051	Ming	Nehes Liah Bing	N1° 5' 44.408"	E116° 51' 17.955"	1.20	1.20	22.00	NL	16/02/2022
052	Muhammad Bukhori a	Nehes Liah Bing	N1° 7' 17.095"	E116° 54' 1.962"	2.01	2.01	23.81	NL	16/02/2022
053	Muhammad Bukhori b	Nehes Liah Bing	N1° 5' 55.823"	E116° 51' 58.830"	2.11	2.11	22.67	NL	16/02/2022
054	Muhammad Bukhori c	Nehes Liah Bing	N1° 5' 56.850"	E116° 52' 35.770"	1.98	1.98	21.74	NL	16/02/2022

BSI Services Malaysia Sdn Bhd
Co. Reg 200801003189
Suite 29.01 Level 29.
The Gardens North Tower.
Mid Valley City.
Lingkaran Syed Putra.
59200 Kuala Lumpur

T: +6 03 9212 9638
F: +6 03 9212 9639
info.malaysia@bsigroup.com
bsigroup.com/en-MY





Inspiring trust for a more resilient world.

Public

No.	Estate / Member	Location	GPS Reference		Area Summary (Ha)		Annual FFB Forecast (MT)	Liability Status (L/NL)	Date join (for ISH)
			Latitude (S)	Longitude (E)	Total Area to be Certified	Planted Area			
055	Mustahir	Nehes Liah Bing	N1° 6' 25.822"	E116° 52' 12.249"	0.87	0.87	19.17	NL	16/02/2022
056	Ngadimin	Nehes Liah Bing	N1° 6' 55.613"	E116° 52' 51.581"	2.00	2.00	24.00	NL	16/02/2022
057	Nur Hasanah	Nehes Liah Bing	N1° 5' 58.829"	E116° 52' 22.514"	2.27	2.27	21.10	NL	16/02/2022
058	Petrus Jagalewo Keroon	Nehes Liah Bing	N1° 5' 52.419"	E116° 51' 48.898"	3.10	3.10	23.18	NL	16/02/2022
059	Rini Angga a	Nehes Liah Bing	N1° 5' 43.856"	E116° 51' 29.975"	2.31	2.31	21.79	NL	16/02/2022
060	Rini Angga b	Nehes Liah Bing	N1° 5' 44.494"	E116° 51' 26.930"	0.18	0.18	21.69	NL	16/02/2022
061	Rizal Umar a	Nehes Liah Bing	N1° 5' 56.412"	E116° 51' 40.107"	1.49	1.49	22.44	NL	16/02/2022
062	Rizal Umar b	Nehes Liah Bing	N1° 5' 48.926"	E116° 50' 3.110"	2.00	2.00	24.00	NL	16/02/2022
063	Rizal Umar c	Nehes Liah Bing	N1° 7' 20.859"	E116° 53' 42.518"	1.95	1.95	22.72	NL	16/02/2022
064	Ruslan a	Nehes Liah Bing	N1° 5' 53.849"	E116° 53' 5.947"	1.71	1.71	23.73	NL	16/02/2022
065	Ruslan b	Nehes Liah Bing	N1° 5' 31.825"	E116° 51' 31.335"	3.66	3.66	22.90	NL	16/02/2022
066	Rusnawati a	Nehes Liah Bing	N1° 5' 57.947"	E116° 52' 12.862"	2.30	2.30	20.80	NL	16/02/2022
067	Rusnawati b	Nehes Liah Bing	N1° 6' 2.188"	E116° 53' 6.911"	1.92	1.92	22.42	NL	16/02/2022
068	Sabri Radui a	Nehes Liah Bing	N1° 6' 9.039"	E116° 52' 29.319"	2.45	2.45	22.51	NL	16/02/2022
069	Sabri Radui b	Nehes Liah Bing	N1° 5' 51.326"	E116° 50' 19.817"	2.00	2.00	24.00	NL	16/02/2022
070	Sandi Jumri	Nehes Liah Bing	N1° 5' 33.498"	E116° 51' 16.695"	1.17	1.17	20.39	NL	16/02/2022
071	Saniah a	Nehes Liah Bing	N1° 7' 25.333"	E116° 53' 52.306"	1.98	1.98	20.58	NL	16/02/2022
072	Saniah b	Nehes Liah Bing	N1° 5' 49.335"	E116° 51' 37.876"	3.00	3.00	2.00	NL	16/02/2022
073	Seniman. K	Nehes Liah Bing	N1° 5' 46.733"	E116° 52' 44.812"	2.20	2.20	21.80	NL	16/02/2022
074	Simon Areama Niron a	Nehes Liah Bing	N1° 6' 3.381"	E116° 51' 48.460"	1.61	1.61	22.26	NL	16/02/2022
075	Simon Areama Niron b	Nehes Liah Bing	N1° 5' 19.473"	E116° 51' 31.840"	2.29	2.29	21.93	NL	16/02/2022
076	Simon Areama Niron c	Nehes Liah Bing	N1° 5' 44.258"	E116° 51' 38.559"	1.16	1.16	20.62	NL	16/02/2022
077	Simon Areama Niron d	Nehes Liah Bing	N1° 5' 43.956"	E116° 51' 41.766"	1.30	1.30	22.90	NL	16/02/2022
078	Sri Kartini Jalung	Nehes Liah Bing	N1° 5' 25.311"	E116° 51' 26.166"	1.53	1.53	21.82	NL	16/02/2022
079	Suhada	Nehes Liah Bing	N1° 6' 0.815"	E116° 51' 52.249"	1.59	1.59	22.62	NL	16/02/2022
080	Sujarno	Nehes Liah Bing	N1° 7' 7.589"	E116° 52' 37.953"	1.20	1.20	20.00	NL	16/02/2022

BSI Services Malaysia Sdn Bhd
Co. Reg 200801003189
Suite 29.01 Level 29.
The Gardens North Tower.
Mid Valley City.
Lingkaran Syed Putra.
59200 Kuala Lumpur

T: +6 03 9212 9638
F: +6 03 9212 9639
info.malaysia@bsigroup.com
bsigroup.com/en-MY





Inspiring trust for a more resilient world.

Public

No.	Estate / Member	Location	GPS Reference		Area Summary (Ha)		Annual FFB Forecast (MT)	Liability Status (L/NL)	Date join (for ISH)
			Latitude (S)	Longitude (E)	Total Area to be Certified	Planted Area			
081	Suparman a	Nehes Liah Bing	N1° 6' 25.797"	E116° 52' 48.288"	1.95	1.95	23.34	NL	16/02/2022
082	Suparman b	Nehes Liah Bing	N1° 7' 24.290"	E116° 53' 32.860"	1.95	1.95	22.11	NL	16/02/2022
083	Suparman c	Nehes Liah Bing	N1° 5' 42.602"	E116° 52' 47.680"	0.22	0.22	21.66	NL	16/02/2022
084	Suryadi	Nehes Liah Bing	N1° 6' 45.681"	E116° 52' 50.745"	2.46	2.46	22.40	NL	16/02/2022
085	Syukur Ibrahim a	Nehes Liah Bing	N1° 5' 46.688"	E116° 51' 29.994"	0.72	0.72	21.40	NL	16/02/2022
086	Syukur Ibrahim b	Nehes Liah Bing	N1° 5' 50.364"	E116° 52' 29.071"	1.97	1.97	23.08	NL	16/02/2022
087	Theodorus Takeama Keroon a	Nehes Liah Bing	N1° 5' 58.403"	E116° 51' 55.379"	1.88	1.88	20.36	NL	16/02/2022
088	Theodorus Takeama Keroon b	Nehes Liah Bing	N1° 5' 24.182"	E116° 51' 31.684"	1.60	1.60	22.41	NL	16/02/2022
089	Theodorus Takeama Keroon c	Nehes Liah Bing	N1° 5' 51.672"	E116° 50' 4.684"	2.00	2.00	21.60	NL	16/02/2022
090	Thomas Tana Moron	Nehes Liah Bing	N1° 5' 50.197"	E116° 51' 54.168"	1.38	1.38	20.80	NL	16/02/2022
091	Tini a	Nehes Liah Bing	N1° 6' 11.839"	E116° 52' 22.511"	2.15	2.15	22.30	NL	16/02/2022
092	Tini b	Nehes Liah Bing	N1° 6' 59.130"	E116° 53' 19.290"	1.81	1.81	22.42	NL	16/02/2022
093	Tuti Agus Tati	Nehes Liah Bing	N1° 6' 8.184"	E116° 51' 43.192"	2.64	2.64	22.70	NL	16/02/2022
094	Wilhelmus Enga Sogen	Nehes Liah Bing	N1° 5' 25.520"	E116° 51' 36.344"	1.20	1.20	19.96	NL	16/02/2022
095	Wuri Titis Sasmito	Nehes Liah Bing	N1° 7' 43.532"	E116° 53' 48.594"	1.16	1.16	22.58	NL	16/02/2022
096	Yah Warti a	Nehes Liah Bing	N1° 5' 53.320"	E116° 52' 44.703"	2.39	2.39	21.07	NL	16/02/2022
097	Yah Warti b	Nehes Liah Bing	N1° 5' 53.258"	E116° 51' 32.037"	2.81	2.81	22.17	NL	16/02/2022
098	Yah Warti c	Nehes Liah Bing	N1° 7' 17.827"	E116° 53' 32.302"	1.98	1.98	22.95	NL	16/02/2022
099	Yardin Jalung a	Nehes Liah Bing	N1° 7' 43.716"	E116° 53' 54.672"	1.97	1.97	23.14	NL	16/02/2022
100	Yardin Jalung b	Nehes Liah Bing	N1° 6' 35.580"	E116° 52' 57.223"	1.97	1.97	21.84	NL	16/02/2022
101	Yocky Saputra a	Nehes Liah Bing	N1° 7' 25.455"	E116° 53' 23.166"	2.04	2.04	22.35	NL	16/02/2022
102	Yocky Saputra b	Nehes Liah Bing	N1° 7' 7.070"	E116° 52' 51.343"	3.12	3.12	22.25	NL	16/02/2022
103	Yocky Saputra c	Nehes Liah Bing	N1° 6' 4.997"	E116° 51' 6.303"	12.43	12.43	21.24	NL	16/02/2022
104	Yocky Saputra d	Nehes Liah Bing	N1° 6' 8.621"	E116° 52' 22.590"	2.14	2.14	22.33	NL	16/02/2022
105	Yogi Saputra	Nehes Liah Bing	N1° 5' 56.881"	E116° 52' 29.094"	2.24	2.24	21.43	NL	16/02/2022
106	Yusran a	Nehes Liah Bing	N1° 5' 56.680"	E116° 53' 6.516"	2.35	2.35	20.37	NL	16/02/2022

BSI Services Malaysia Sdn Bhd
Co. Reg 200801003189
Suite 29.01 Level 29.
The Gardens North Tower.
Mid Valley City.
Lingkaran Syed Putra.
59200 Kuala Lumpur

T: +6 03 9212 9638
F: +6 03 9212 9639
info.malaysia@bsigroup.com
bsigroup.com/en-MY





Inspiring trust for a more resilient world.

Public

No.	Estate / Member	Location	GPS Reference		Area Summary (Ha)		Annual FFB Forecast (MT)	Liability Status (L/NL)	Date join (for ISH)
			Latitude (S)	Longitude (E)	Total Area to be Certified	Planted Area			
107	Yusran b	Nehes Liah Bing	N1° 6' 2.456"	E116° 51' 30.374"	1.51	1.51	23.69	NL	16/02/2022
108	Yuvenalis Huvat a	Nehes Liah Bing	N1° 5' 28.978"	E116° 51' 28.012"	2.10	2.10	22.85	NL	16/02/2022
109	Yuvenalis Huvat b	Nehes Liah Bing	N1° 7' 23.155"	E116° 53' 23.094"	1.99	1.99	22.31	NL	16/02/2022
110	Zainudin a	Nehes Liah Bing	N1° 6' 22.901"	E116° 52' 29.674"	1.98	1.98	20.53	NL	16/02/2022
111	Zainudin b	Nehes Liah Bing	N1° 5' 43.993"	E116° 50' 51.611"	0.31	0.31	19.11	NL	16/02/2022
112	Zainudin c	Nehes Liah Bing	N1° 7' 38.411"	E116° 53' 52.376"	1.98	1.98	21.78	NL	16/02/2022
113	Abdul Latif a	Nehes Liah Bing	N1° 6' 39.507"	E116° 52' 43.046"	1.37	1.37	21.03	NL	16/02/2022
114	Abdul Latif b	Nehes Liah Bing	N1° 6' 42.739"	E116° 52' 38.703"	2.11	2.11	21.59	NL	16/02/2022
115	Antonius Pati Niron a	Nehes Liah Bing	N1° 5' 45.873"	E116° 51' 58.959"	4.21	4.21	22.79	NL	16/02/2022
116	Antonius Pati Niron b	Nehes Liah Bing	N1° 5' 49.768"	E116° 51' 59.221"	1.83	1.83	19.68	NL	16/02/2022
117	Antonius Pati Niron c	Nehes Liah Bing	N1° 5' 56.086"	E116° 52' 1.673"	2.61	2.61	23.01	NL	16/02/2022
118	Antonius Pati Niron d	Nehes Liah Bing	N1° 6' 49.234"	E116° 52' 48.954"	3.32	3.32	21.67	NL	16/02/2022
119	Ariyawan a	Nehes Liah Bing	N1° 7' 18.809"	E116° 53' 8.457"	1.93	1.93	23.69	NL	16/02/2022
120	Ariyawan b	Nehes Liah Bing	N1° 6' 17.013"	E116° 52' 14.627"	4.99	4.99	23.58	NL	16/02/2022
121	Baharrudin	Nehes Liah Bing	N1° 6' 30.082"	E116° 53' 2.294"	1.89	1.89	21.55	NL	16/02/2022
122	Bahrudin	Nehes Liah Bing	N1° 5' 39.607"	E116° 53' 4.426"	1.82	1.82	23.69	NL	16/02/2022
123	Batar	Nehes Liah Bing	N1° 6' 29.321"	E116° 51' 51.534"	3.86	3.86	21.77	NL	16/02/2022
124	Burhan	Nehes Liah Bing	N1° 6' 23.088"	E116° 52' 36.403"	1.96	1.96	23.24	NL	16/02/2022
125	Darius Jalung a	Nehes Liah Bing	N1° 6' 38.852"	E116° 52' 57.785"	2.30	2.30	20.84	NL	16/02/2022
126	Darius Jalung b	Nehes Liah Bing	N1° 6' 26.801"	E116° 53' 1.631"	2.03	2.03	23.65	NL	16/02/2022
127	Dominikus Hat Yeang	Nehes Liah Bing	N1° 7' 29.161"	E116° 53' 16.822"	3.37	3.37	22.80	NL	16/02/2022
128	Edi Sutrisno	Nehes Liah Bing	N1° 5' 28.273"	E116° 51' 21.259"	0.94	0.94	23.04	NL	16/02/2022
129	Ferawati	Nehes Liah Bing	N1° 6' 41.029"	E116° 52' 35.760"	2.14	2.14	22.45	NL	16/02/2022
130	Geah Gok a	Nehes Liah Bing	N1° 5' 41.885"	E116° 50' 48.931"	3.19	3.19	23.51	NL	16/02/2022
131	Geah Gok b	Nehes Liah Bing	N1° 5' 46.771"	E116° 51' 4.332"	0.74	0.74	23.98	NL	16/02/2022
132	Geah Gok c	Nehes Liah Bing	N1° 5' 43.296"	E116° 51' 6.094"	1.70	1.70	23.96	NL	16/02/2022

BSI Services Malaysia Sdn Bhd
Co. Reg 200801003189
Suite 29.01 Level 29.
The Gardens North Tower.
Mid Valley City.
Lingkaran Syed Putra.
59200 Kuala Lumpur

T: +6 03 9212 9638
F: +6 03 9212 9639
info.malaysia@bsigroup.com
bsigroup.com/en-MY





Inspiring trust for a more resilient world.

Public

No.	Estate / Member	Location	GPS Reference		Area Summary (Ha)		Annual FFB Forecast (MT)	Liability Status (L/NL)	Date join (for ISH)
			Latitude (S)	Longitude (E)	Total Area to be Certified	Planted Area			
133	H. Ibrahim a	Nehes Liah Bing	N1° 6' 35.785"	E116° 52' 13.604"	1.67	1.67	23.01	NL	16/02/2022
134	H. Ibrahim b	Nehes Liah Bing	N1° 6' 38.127"	E116° 52' 18.003"	1.74	1.74	23.32	NL	16/02/2022
135	H. Ibrahim c	Nehes Liah Bing	N1° 6' 36.979"	E116° 52' 15.738"	1.47	1.47	23.64	NL	16/02/2022
136	Helmida	Nehes Liah Bing	N1° 5' 52.873"	E116° 52' 52.359"	1.82	1.82	23.77	NL	16/02/2022
137	I Nyoman Gria a	Nehes Liah Bing	N1° 5' 55.482"	E116° 52' 22.213"	2.04	2.04	23.57	NL	16/02/2022
138	I Nyoman Gria b	Nehes Liah Bing	N1° 6' 15.844"	E116° 52' 3.611"	2.41	2.41	23.90	NL	16/02/2022
139	I Nyoman Gria c	Nehes Liah Bing	N1° 5' 44.926"	E116° 52' 19.888"	0.74	0.74	23.71	NL	16/02/2022
140	Imran Dongoran S.H..M.H	Nehes Liah Bing	N1° 6' 2.533"	E116° 52' 15.702"	2.03	2.03	23.68	NL	16/02/2022
141	Isman a	Nehes Liah Bing	N1° 6' 5.827"	E116° 52' 11.579"	0.77	0.77	23.86	NL	16/02/2022
142	Isman b	Nehes Liah Bing	N1° 6' 7.307"	E116° 52' 7.882"	0.88	0.88	23.94	NL	16/02/2022
143	Kaseng	Nehes Liah Bing	N1° 6' 33.151"	E116° 52' 37.808"	4.43	4.43	21.69	NL	16/02/2022
144	Lipuk Candra	Nehes Liah Bing	N1° 6' 22.620"	E116° 51' 44.024"	1.81	1.81	23.86	NL	16/02/2022
145	Machmud	Nehes Liah Bing	N1° 6' 15.926"	E116° 52' 54.406"	1.99	1.99	21.71	NL	16/02/2022
146	Mardewiah	Nehes Liah Bing	N1° 6' 36.810"	E116° 52' 29.003"	2.04	2.04	22.37	NL	16/02/2022
147	Marik	Nehes Liah Bing	N1° 6' 33.323"	E116° 52' 24.465"	0.83	0.83	23.16	NL	16/02/2022
148	Maryana Lia Ping a	Nehes Liah Bing	N1° 7' 46.423"	E116° 53' 45.402"	4.79	4.79	22.55	NL	16/02/2022
149	Maryana Lia Ping b	Nehes Liah Bing	N1° 7' 47.977"	E116° 53' 42.966"	3.80	3.80	22.00	NL	16/02/2022
150	Mochamad Mansyur	Nehes Liah Bing	N1° 6' 45.004"	E116° 52' 5.224"	3.38	3.38	23.43	NL	16/02/2022
151	Muhammad Ali	Nehes Liah Bing	N1° 6' 38.981"	E116° 52' 27.138"	0.58	0.58	20.53	NL	16/02/2022
152	Muhammad Idil a	Nehes Liah Bing	N1° 6' 33.052"	E116° 52' 32.217"	2.50	2.50	22.06	NL	16/02/2022
153	Muhammad Idil b	Nehes Liah Bing	N1° 6' 27.771"	E116° 52' 1.820"	1.73	1.73	22.15	NL	16/02/2022
154	Muhidin	Nehes Liah Bing	N1° 6' 39.229"	E116° 51' 57.112"	1.18	1.18	22.38	NL	16/02/2022
155	Nasir	Nehes Liah Bing	N1° 6' 35.596"	E116° 52' 22.477"	1.65	1.65	23.34	NL	16/02/2022
156	Ngalimun a	Nehes Liah Bing	N1° 6' 36.545"	E116° 51' 57.763"	1.63	1.63	22.06	NL	16/02/2022
157	Ngalimun b	Nehes Liah Bing	N1° 6' 9.338"	E116° 52' 3.930"	1.63	1.63	22.06	NL	16/02/2022
158	Ngalimun c	Nehes Liah Bing	N1° 6' 25.906"	E116° 51' 46.988"	3.93	3.93	23.80	NL	16/02/2022

BSI Services Malaysia Sdn Bhd
Co. Reg 200801003189
Suite 29.01 Level 29.
The Gardens North Tower.
Mid Valley City.
Lingkaran Syed Putra.
59200 Kuala Lumpur

T: +6 03 9212 9638
F: +6 03 9212 9639
info.malaysia@bsigroup.com
bsigroup.com/en-MY





Inspiring trust for a more resilient world.

Public

No.	Estate / Member	Location	GPS Reference		Area Summary (Ha)		Annual FFB Forecast (MT)	Liability Status (L/NL)	Date join (for ISH)
			Latitude (S)	Longitude (E)	Total Area to be Certified	Planted Area			
159	Ngatijan	Nehes Liah Bing	N1° 6' 39.298"	E116° 52' 32.666"	1.86	1.86	20.69	NL	16/02/2022
160	Noviana a	Nehes Liah Bing	N1° 5' 46.493"	E116° 52' 51.938"	1.92	1.92	23.71	NL	16/02/2022
161	Noviana b	Nehes Liah Bing	N1° 6' 5.602"	E116° 52' 53.326"	1.94	1.94	23.49	NL	16/02/2022
162	Noviana c	Nehes Liah Bing	N1° 6' 4.342"	E116° 52' 45.575"	4.90	4.90	23.98	NL	16/02/2022
163	Nur Asmiati	Nehes Liah Bing	N1° 6' 9.316"	E116° 52' 35.701"	2.20	2.20	24.00	NL	16/02/2022
164	Nur Hayati	Nehes Liah Bing	N1° 5' 52.213"	E116° 52' 15.570"	1.79	1.79	23.87	NL	16/02/2022
165	Parno a	Nehes Liah Bing	N1° 5' 38.025"	E116° 51' 48.006"	0.29	0.29	19.00	NL	16/02/2022
166	Parno b	Nehes Liah Bing	N1° 5' 43.512"	E116° 51' 45.886"	1.55	1.55	23.20	NL	16/02/2022
167	Paulus Ding Yel	Nehes Liah Bing	N1° 7' 21.744"	E116° 52' 48.917"	1.48	1.48	21.14	NL	16/02/2022
168	Raden Sumitro Simorangkir a	Nehes Liah Bing	N1° 5' 54.470"	E116° 52' 15.393"	0.98	0.98	22.01	NL	16/02/2022
169	Raden Sumitro Simorangkir b	Nehes Liah Bing	N1° 5' 42.909"	E116° 52' 42.025"	0.88	0.88	21.84	NL	16/02/2022
170	Rahimin K a	Nehes Liah Bing	N1° 6' 32.697"	E116° 52' 19.356"	1.41	1.41	23.79	NL	16/02/2022
171	Rahimin K b	Nehes Liah Bing	N1° 6' 50.207"	E116° 52' 38.950"	1.71	1.71	23.83	NL	16/02/2022
172	Rahmad Afandi	Nehes Liah Bing	N1° 6' 11.389"	E116° 52' 10.006"	2.02	2.02	23.76	NL	16/02/2022
173	Sadiran	Nehes Liah Bing	N1° 5' 26.641"	E116° 51' 19.071"	1.69	1.69	23.40	NL	16/02/2022
174	Sahrul	Nehes Liah Bing	N1° 6' 25.700"	E116° 52' 29.853"	1.36	1.36	23.07	NL	16/02/2022
175	Senen Arsad	Nehes Liah Bing	N1° 7' 15.362"	E116° 54' 11.185"	1.96	1.96	23.38	NL	16/02/2022
176	Siswo Pandoyo a	Nehes Liah Bing	N1° 6' 9.186"	E116° 52' 45.907"	2.76	2.76	22.58	NL	16/02/2022
177	Siswo Pandoyo b	Nehes Liah Bing	N1° 6' 12.591"	E116° 52' 53.997"	2.06	2.06	23.27	NL	16/02/2022
178	Siswo Pandoyo c	Nehes Liah Bing	N1° 5' 59.161"	E116° 52' 52.892"	1.97	1.97	23.19	NL	16/02/2022
179	Stevania G.K a	Nehes Liah Bing	N1° 5' 59.146"	E116° 51' 44.112"	1.97	1.97	23.16	NL	16/02/2022
180	Stevania G.K b	Nehes Liah Bing	N1° 6' 52.064"	E116° 52' 58.293"	2.07	2.07	22.07	NL	16/02/2022
181	Sugito	Nehes Liah Bing	N1° 6' 6.046"	E116° 53' 0.105"	1.98	1.98	23.08	NL	16/02/2022
182	Sukarno	Nehes Liah Bing	N1° 6' 19.257"	E116° 52' 54.651"	1.94	1.94	23.53	NL	16/02/2022
183	Sumanto a	Nehes Liah Bing	N1° 5' 33.477"	E116° 51' 11.584"	3.54	3.54	23.06	NL	16/02/2022
184	Sumanto b	Nehes Liah Bing	N1° 6' 40.114"	E116° 52' 21.191"	2.06	2.06	23.27	NL	16/02/2022

BSI Services Malaysia Sdn Bhd
Co. Reg 200801003189
Suite 29.01 Level 29.
The Gardens North Tower.
Mid Valley City.
Lingkaran Syed Putra.
59200 Kuala Lumpur

T: +6 03 9212 9638
F: +6 03 9212 9639
info.malaysia@bsigroup.com
bsigroup.com/en-MY



Public

No.	Estate / Member	Location	GPS Reference		Area Summary (Ha)		Annual FFB Forecast (MT)	Liability Status (L/NL)	Date join (for ISH)
			Latitude (S)	Longitude (E)	Total Area to be Certified	Planted Area			
185	Sunardi a	Nehes Liah Bing	N1° 6' 4.416"	E116° 52' 37.137"	4.20	4.20	22.86	NL	16/02/2022
186	Sunardi b	Nehes Liah Bing	N1° 6' 9.184"	E116° 52' 40.028"	1.38	1.38	22.61	NL	16/02/2022
187	Sunarsih	Nehes Liah Bing	N1° 6' 2.038"	E116° 52' 29.338"	1.92	1.92	23.72	NL	16/02/2022
188	Supriyono	Nehes Liah Bing	N1° 7' 36.474"	E116° 53' 22.405"	4.50	4.50	24.00	NL	16/02/2022
189	Susilo	Nehes Liah Bing	N1° 6' 2.038"	E116° 51' 40.089"	1.93	1.93	23.64	NL	16/02/2022
190	Sutini	Nehes Liah Bing	N1° 6' 5.326"	E116° 52' 29.476"	2.17	2.17	23.25	NL	16/02/2022
191	Sutoyo	Nehes Liah Bing	N1° 5' 56.503"	E116° 52' 44.929"	2.34	2.34	23.62	NL	16/02/2022
192	Suwardi a	Nehes Liah Bing	N1° 6' 2.841"	E116° 52' 0.703"	3.14	3.14	23.03	NL	16/02/2022
193	Suwardi b	Nehes Liah Bing	N1° 6' 6.518"	E116° 52' 9.733"	1.12	1.12	23.65	NL	16/02/2022
194	Tomi Arisma	Nehes Liah Bing	N1° 5' 46.974"	E116° 52' 36.576"	2.32	2.32	23.81	NL	16/02/2022
195	Tri Nurhadi a	Nehes Liah Bing	N1° 6' 58.076"	E116° 52' 42.687"	2.45	2.45	23.51	NL	16/02/2022
196	Tri Nurhadi b	Nehes Liah Bing	N1° 6' 59.465"	E116° 52' 46.300"	2.63	2.63	22.00	NL	16/02/2022
197	Yudi Yak	Nehes Liah Bing	N1° 7' 39.771"	E116° 53' 30.596"	4.63	4.63	19.00	NL	16/02/2022
198	Yunita Lehung	Nehes Liah Bing	N1° 7' 41.485"	E116° 53' 36.556"	4.97	4.97	22.21	NL	16/02/2022
199	Zainuddin	Nehes Liah Bing	N1° 6' 41.992"	E116° 52' 25.882"	2.05	2.05	23.37	NL	16/02/2022
200	Mufit	Nehes Liah Bing	N1° 6' 38.673"	E116° 52' 2.935"	1.89	1.89	21.56	NL	16/02/2022
201	Berta Lina	Nehes Liah Bing	N1° 5' 36.070"	E116° 52' 18.517"	3.20	3.20	22.50	NL	16/02/2022
202	Syawiyah	Nehes Liah Bing	N1° 5' 30.137"	E116° 52' 14.523"	0.85	0.85	19.76	NL	16/02/2022
203	Kariati	Nehes Liah Bing	N1° 6' 7.550"	E116° 53' 7.136"	1.98	1.98	22.38	NL	16/02/2022
TOTAL					440.69	440.69	9,827.39		

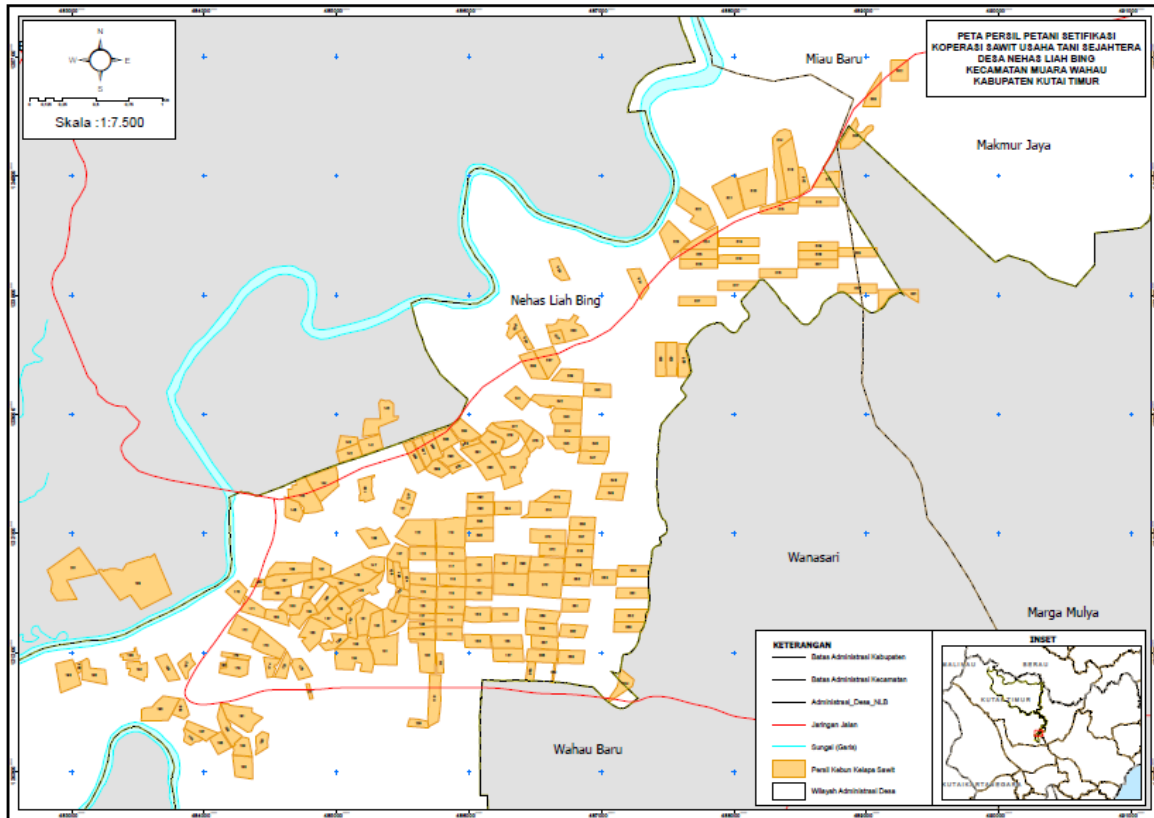
Note: L – with Liability; NL – No Liability

The members to this certification does not involve new development. Consequently, there is no NPP process.

To navigate the details of the RaCP, more information in regard to the potential liability can be found from RSPO website (<https://www.rspo.org/certification/remediation-and-compensation/racp-tracker>)

3. Location maps of the ISH group

Public



BSI Services Malaysia Sdn. Bhd. is accredited to provide independent third-party RSPO P&C and RSPO SCCS certification services. BSI Malaysia is a subsidiary of BSI Group, a Royal Charter Company. BSI is the world’s Trusted brand in providing business improvement solutions with more than 86,000 clients in over 193 countries. BSI’s mission is to share knowledge, innovation and best practice to help people and organizations make excellence a habit. BSI is the U.K.’s National Standards Body. BSI Services Malaysia Sdn. Bhd. has RSPO affiliate offices in Indonesia, Australia, China and India.

The audit team for this audit will consists the following:

Audit Team	Role/Area of Requirement	Qualification and Experience
Eko Prastio Ramadhan	Team Leader Auditing Environmental management, GHG, HCV, Impact Assessment.	<p>Education: Holds a Bachelor Degree in Forest Resources Conservation and Ecotourism from Forestry Faculty, Bogor Agricultural University (IPB).</p> <p>Work Experience: Over 4 years of working experience in biodiversity officer with Birdlife Indonesia and consultant with PT Inoa Konsultindo. Over 2½ years of working experience in palm oil estate with PT Salim Ivomas Pratama Tbk and Capitol Plantation Group implementing sustainability. Over 4½ years of working experience as RSPO P&C Certification Program Manager and auditor covering standard such as RSPO P&C, RSPO SCCS, ISPO, ISO 9001 and ISO 14001.</p> <p>Training attended: Completed ISO 14001:2015 Lead Auditor Course, Endorsed RSPO P&C Lead Auditor Course, Social Impact</p>

Public

		<p>Assessment Training, Endorsed RSPO SCC Auditor Lead Auditor Course, ISPO Auditor Batch 19 Training, ISO 9001 Lead Auditor Course and Identification of HCV Areas Training.</p> <p>Language proficiency: Fluent in Bahasa Indonesia and English</p>
Edy Widodo	<p>Team Member</p> <p>Auditing Social aspects, Consultation with stakeholders, Organization policies, Continuous Improvement.</p>	<p>Education: Holds a Bachelor Degree majoring Agricultural Technology from University of Padjadjaran, Bandung.</p> <p>Work Experience: 8 years working experience in palm oil industry as Agronomist and Assistant Manager in various companies. 9 year working experience as RSPO/ISPO auditor.</p> <p>Training attended: Completed ISO 9001 Lead Auditor Course, ISPO endorsed auditor course, Understanding ISO 14001 training, Auditing ISO 14001: 2004 training, Endorsed RSPO Supply Chain Certification Lead Auditor Course, Endorsed RSPO P&C Lead Auditor Course, SMETA Requirements Training, Introductory Course for High Conservation Value and High Carbon Stock (HCS) in Oil Palm Plantation.</p> <p>Language proficiency: Fluent in Bahasa Indonesia and English</p>
Mujinius Jalaraya	<p>Team Member</p> <p>Auditing Health and safety, Organization commitment, Legal Compliance, Long-term economic planning, Internal Control System.</p>	<p>Education: Holds a Bachelor Degree majoring in Forest Resources Conservation and Ecotourism from Bogor Agricultural University (IPB).</p> <p>Work Experience: 6 years working experience in palm oil plantations as SHE Assistant at PT. Astra Agro Lestari Tbk and Sustainability Supervisor at Teladan Prima Group. 8 years working experience as RSPO Auditor / Lead Auditor.</p> <p>Training attended: Completed ISO 9001 Lead Auditor course, ISPO Lead Auditor course, Endorsed RSPO P&C Lead Auditor course, Endorsed RSPO SCCS Lead Auditor course, Introductory Course for High Conservation Value and High Carbon Stock (HCS) in Oil Palm Plantation, ISO 14001 Internal Auditor Training, ISO 45001 Lead Auditor course, OHS Expert Training, SMETA Requirements Training</p> <p>Language proficiency: Fluent in Bahasa Indonesia and English</p>
Nanang Rusmana	<p>Team Member</p> <p>Auditing Plantation best management practices, Worker welfare, Worker consultation.</p>	<p>Education: Holds a Bachelor Degree of Forestry from Bogor Agricultural University (IPB)</p> <p>Work Experience: 5 years working experience in palm oil industry as SHE Assistant at PT. Astra Agro Lestari Tbk. 3 years working experience in mining industry as Environment Coordinator and SHE Coordinator with PT. Kapuas Prima Coal Group. 6 years working experience as RSPO/ISPO auditor</p> <p>Training attended: Completed ISO 9001:2015 Lead Auditor Course, ISPO Auditor Course, ISO 14001:2015 Lead Auditor Course, ISO 45001:2018 Lead Auditor Course, Endorsed RSPO P&C Lead Auditor Course, Endorsed RSPO Supply Chain Certification Lead Auditor Course, SMK3 Auditor Course, HCV Assessor Course, General OHS Expert Course, SMETA Requirements training.</p> <p>Language proficiency: Fluent in Bahasa Indonesia and English</p>

In preparation for the assessment. related stakeholders are invited to provide written input regarding this assessment by commenting on related aspects to the certification unit. Topics that you may wish to comment on are as follows but not limited to:

- Environmental Protection & conservation
- Your relationship with the company

Public

- Human rights & workers welfare
- Opportunity for employment
- Company approach to community development
- Participation in decision making
- Free, prior and informed consent
- Suggestion for improvement

Comments that are received within 30 days from the date of this letter will be considered in the Assessment. Please include the following details in case we may need to contact you for clarification or follow-up on any issue raised by you.

Name: Email:
Position: Phone Number:

If you wish your comments to be treated confidentially or to remain anonymous, please mark your reply "CONFIDENTIAL". You may direct your comments to:

Scheme Manager:

Dr. Chaiyaporn Seekao
BSI Services Malaysia Sdn. Bhd.
Suite 29.01 Level 29 The Gardens North
Tower, Mid Valley City Lingkaran Syed Putra
59200 Kuala Lumpur
Federal Territory, Malaysia
Fax : +603 9212 9639
Email : Chaiyaporn.Seekao@bsigroup.com

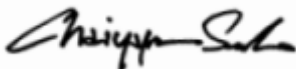
AND / OR

Auditee:

Mrs. Helmida
Koperasi Sawit Usaha Tani Sejahtera
Long Bau Hamlet, Nehes Liah Bing Village, Muara
Wahau District, Kutai Timur Regency, Kalimantan
Timur Province, Indonesia
Fax : -
Email : Ksusawitusahatanisejahtera@gmail.com

We thank you and appreciate for your comments.

Yours sincerely,



.....
Chaiyaporn Seekao, Ph.D.
Technical and Compliance Manager - Food (RSPO)
BSI Services Malaysia Sdn Bhd