

The BSI Workplace Hygiene Solution

Protecting workers, customers, and organizations



Why is workplace hygiene so important?

As we learn to navigate an evolving workplace landscape with an increased focus on health, safety and hygiene, organizations need to adapt and meet new and evolving regulations and provide a healthy and safe environment for the benefit of workers and customers.

Good workplace health, safety, wellbeing and hygiene practices contribute to reducing the risk of injury and ill-health including the incidence of transmittable disease, and the associated cost of absenteeism. They help improve productivity and keep workers, customers and organizations safe.

Introducing the BSI Workplace Hygiene Solution

The BSI Workplace Hygiene Solution has been designed to incorporate world-class principles and guidelines. It will enable you to embed a culture of good practice health, safety and hygiene throughout your organization.

These are the services which will enable your organization to rebuild, re-open and become resilient.



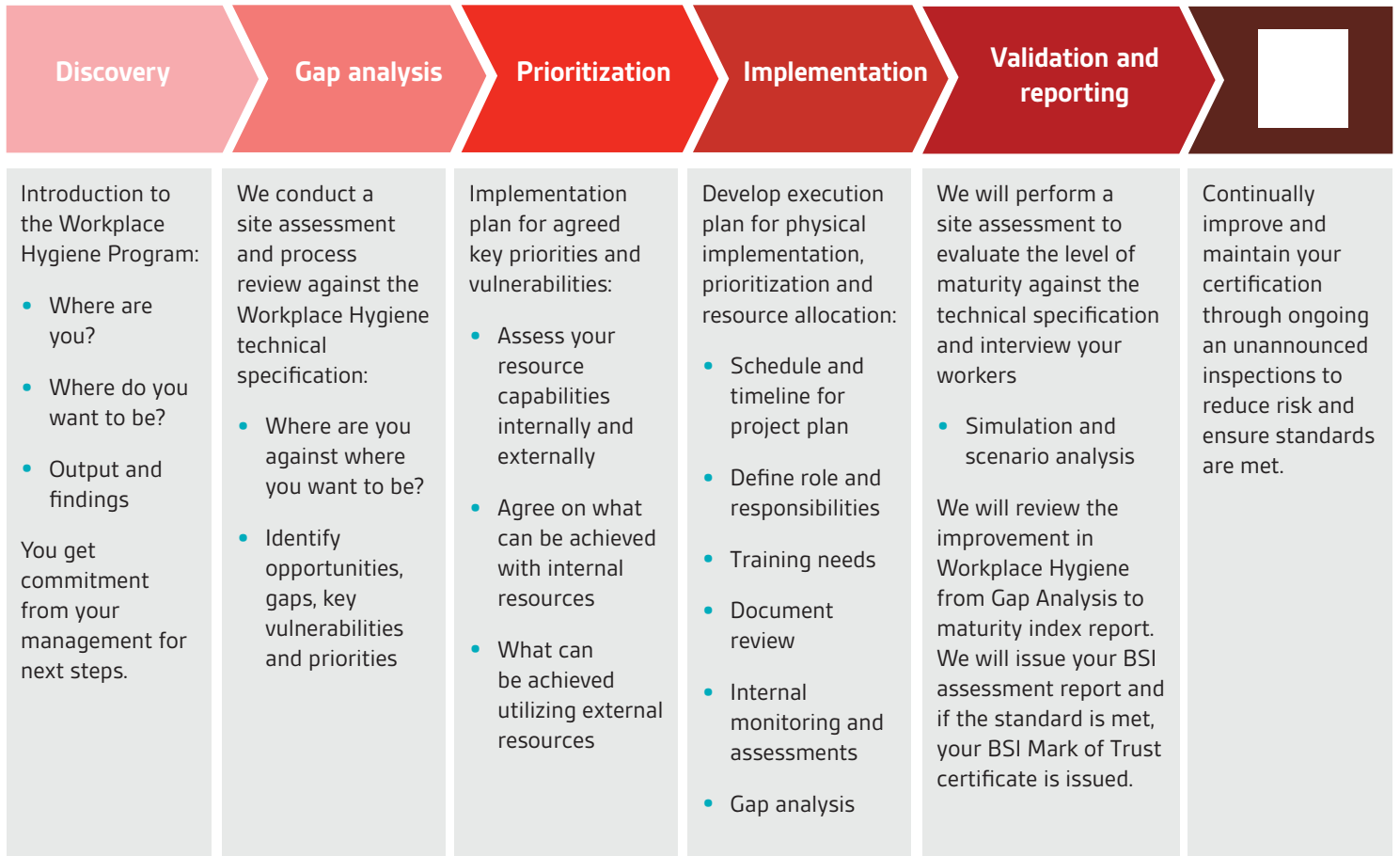
Introducing the BSI Workplace Hygiene Solution (continued)

- **Manage standards with British Standards Online (BSOL)**
BSOL gives access to view multiple standards for anyone in your organization who needs it. Subscribe to our pre-built modules or build a personalized standards collection, saving you money, reducing risk and instilling trust with your clients.
- **Workplace health and safety consulting services**
A comprehensive range of strategic planning and programme management solutions including COVID-19 workplace gap assessment, emergency response and preparedness management, employee protection, training, communication and more. Our Pandemic “Recovery and Rebuild Playbook” offers a strategic guide to restarting your business. And as you adapt and introduce new practices we can work with you to design programmes that cover safety policy and workplace redesign. Using immersive technology and remote assessments our consultants can work with you to develop efficient processes, improve quality, reduce injuries and employee turnover and optimize people performance.
- **Training to enable your people**
Designed to enable your people to adopt good practice in workplace hygiene, this includes micro-learning modules which conveniently accessible on smartphones, tablets or laptops. Modules include: using and fitting face masks and disposable gloves, enhanced work place cleaning and disinfection personal hygiene, and work place behaviour programs (interaction and distancing).
- **Customized audits**
Shape your own customized audit program for workplace hygiene to mitigate workplace hygiene risk. This can be delivered on site or by remote audit and can include second party supplier audits. We can also conduct a gap analysis to identify areas for improvement.
- **Workplace hygiene BSI Kitemark certification**
BSI Mark of Trust “Kitemark” certification is a certification mark that can be applied to your facility to show workers, the public or anyone entering your site they are in safe hands as you've put in place a rigorous and robust hygiene program. Regular inspections delivered by BSI assessors help keep standards high, create trust, and build a resilient organization.



How does the programme work?

The BSI journey to workplace hygiene resilience can be configured as a staged programme. We'll work with you to determine the solutions and journey that best meets your needs.



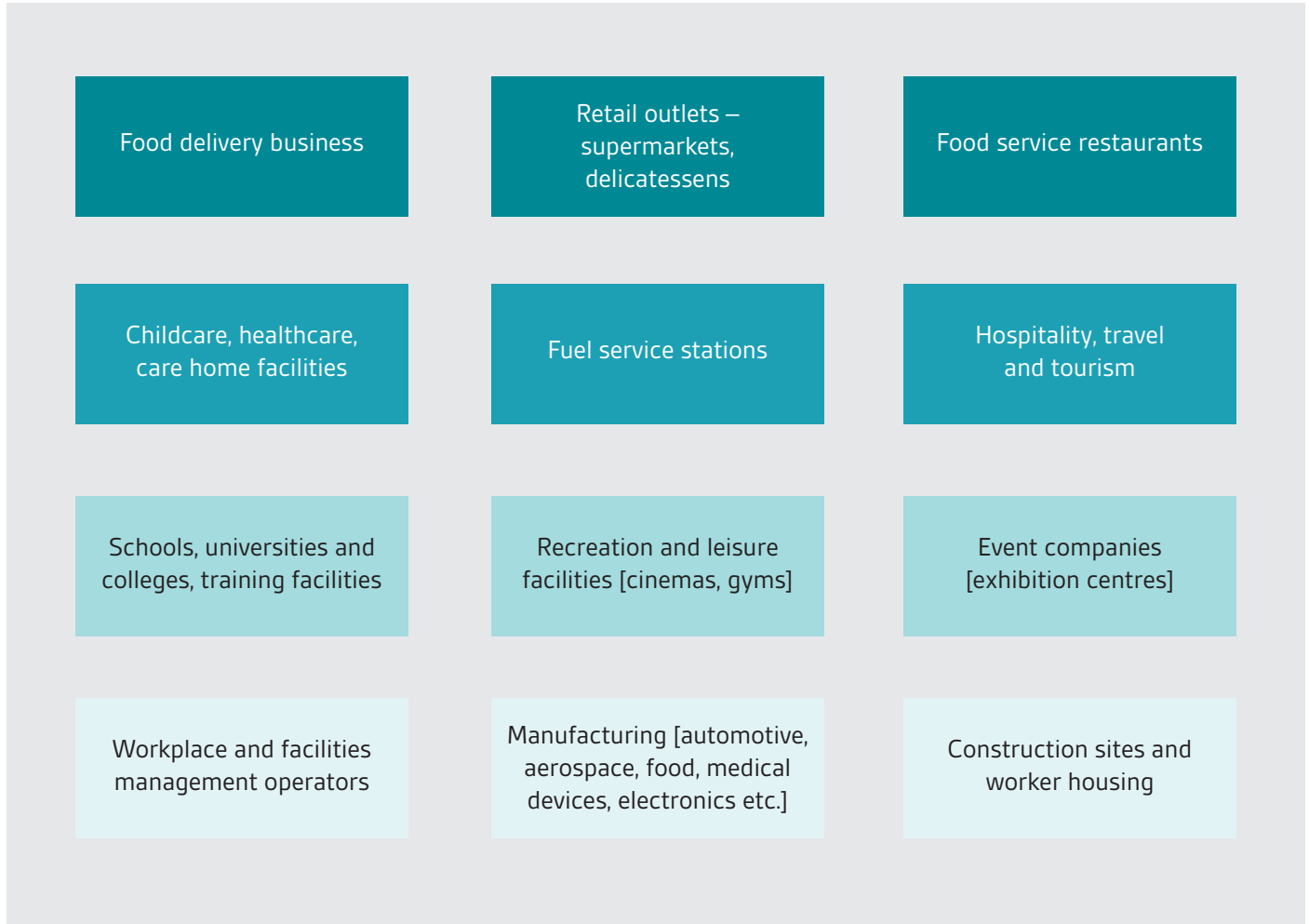
How can this help my organization?

We work with you to address the health, safety, wellbeing and hygiene-related issues so you can:

- Meet good practice workplace hygiene, personal hygiene, and food hygiene protocols
- Fast-track workers through the onboarding process
- Protect your workforce including Personal Protective Equipment (PPE) and social distancing
- Embed procedures to protect your customers and visitors
- Build vendor awareness and supply chain resilience
- Deliver awareness training across your facilities

Who is the BSI Workplace Hygiene Solution for?

Our health and safety and hygiene experts have developed a suite of workplace hygiene solutions which are applicable for the following industry types.



How will you benefit?

- **Get back to business safely**, as you implement new workplace hygiene programs for your business operations and facilities
- **Protect your workers, colleagues and customers**, by reducing risks of infection and managing cleanliness effectively
- **Build trust**, by enabling people to adopt good practice workplace hygiene so they feel safe
- **Become resilient for the future**, by ensuring effective health, safety, wellbeing and hygiene practices and procedures are in place to support “next normal”



BSI/UK/1769/PC/0620/EN/GRP

Why choose BSI?

BSI leads the way in embedding safety culture, whether it's industrial hygiene, food safety culture, occupational health safety and wellbeing, hospital hygiene, or cleaning.

Since our foundation more than 100 years ago as the world's first National Standards Body, we have partnered with our clients to successfully navigate through environmental, societal and economic setbacks. Today we are a trusted global brand comprising of over 5000 colleagues, operating in over 193 countries and shaping some of the world's most widely adopted standards and habits of excellence.

We enable our clients to be prepared for whatever comes their way to become stronger and more resilient organizations. We help our clients inspire trust in their people, processes and products, as underpinned by our Royal Charter. It's in our DNA.



By Royal Charter

Call: 1300 730 134

Email: info.aus@bsigroup.com

Visit: [bsigroup.com/en-au](https://www.bsigroup.com/en-au)