



Supplier Compliance Manager (SCM) is BSI's web-based risk assessment and audit management solution that analyzes and quantifies corporate and supplier risk and compliance by leveraging our proprietary, global supply chain intelligence. Infusing BSI's geographic risk data and analysis into the assessment process allows you to effectively evaluate and track compliance and risk throughout your entire supply chain. SCM is used globally to analyze and quantify risk and compliance for programs including Social Responsibility, Business Continuity, and Supply Chain Security. SCM facilitates supplier self-assessments, corporate audits and BSI Supply Chain Verification audits allowing companies to easily monitor and track compliance with their established programs through various assessment methods.

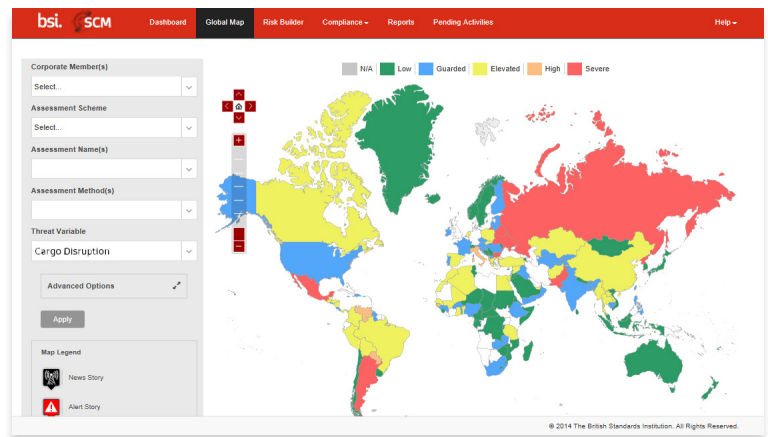
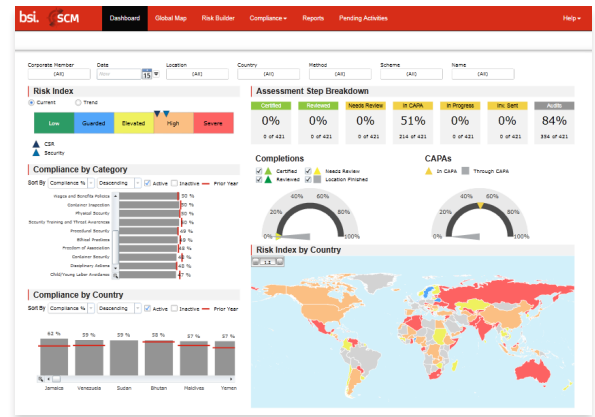
SCM proactively identifies risk within your supply chain by providing multiple features that help increase your visibility and improve communication with your suppliers as well as within your organization. SCM allows you to streamline all your supply chain risk and compliance management efforts by utilizing a single, comprehensive solution. SCM provides interactive mapping features, customizable assessments and scoring methodologies, full email and translation capabilities, robust assessment and audit reports, holistic supplier risk ratings, and a Corrective and Preventative Action (CAPA) module to manage and track your global program's progress towards compliance. SCM's automated process removes the manual labor that exists in many approaches used to identify and manage risk in the global supply chain.

KEY FEATURES

Dashboards, Mapping & Reports

SCM provides a wide range of analytics to fit your company's needs. SCM's dashboards provide you with a macro and micro view of your corporate and supplier self-assessment and audit risk and compliance levels. SCM's main dashboard allows you to review Key Performance Indicators (KPI), Risk Indexing (RI), and compliance metrics to help you identify and mitigate risk and compliance issues. Dashboard filters allow users to view risk indexes and compliance scores from high to low risk, by region and country, and by compliance program in order to easily identify high risk suppliers that require immediate action. From the micro dashboard view, users may use this information to help determine where to order BSI Supply Chain Verification Audits to further work towards compliant supply chain operations. SCM's global mapping feature is infused with BSI's supply chain intelligence to provide you with a complete overview of your corporate and supplier geographic locations, risk ratings, and incident alerts based on the selected risk filter. Users can hover over a specific country to view a quick summary or select the country to view a detailed description of the specific operations located there. SCM's global map can be downloaded as a PDF to easily share areas of concern with adjoining departments and upper management.

Once an assessment or audit has been completed, SCM will automatically generate a robust report to reflect the operations' business profile, geographic and holistic risk index, and the completed assessment along with any uploaded attachments for your review. Historical compliance and risk reports are stored within SCM, allowing you to continuously track, monitor, and trend your supplier and corporate assessments, audits, and CAPA results.

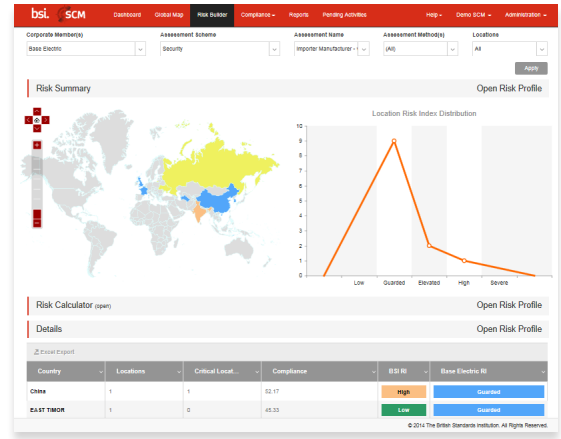


...making excellence a habit.™

Custom Risk Analysis Builder

SCM's custom risk analysis builder allows users to review the results of a completed assessment or audit, and perform a post-assessment risk review by altering how the Risk Index (RI) was calculated. This allows organizations to analyze risk in numerous ways, providing a truly holistic approach to managing potential global threats. Based on your selection, a map will populate on the page to show the average RI by the selected country and assessment scheme. An interactive chart will also be generated to help you construct and manage your RI percentage distribution. The risk builder will allow you to manipulate the risk variable selection and weighting in the following categories: geographic risk, company profile indicators, and compliance score.

If the user prefers the new scoring methodology, they will then have the ability to save the new method and use it to create a new version of all recently completed assessments. This new score will also be reflected in your dashboard metrics.



Customizable Assessments and Corrective Actions

BSI offers standard risk assessment questionnaires and corrective actions to manage supplier compliance regarding Social Responsibility, Supply Chain Security, and Business Continuity corporate and government requirements. SCM's assessment builder allows users to include additional questions, or create their own custom assessment to ensure your corporate standards and objectives are being met.

SCM allows you to monitor and track assessment and corrective action completion from start to finish. The Corrective and Preventative Actions (CAPA) feature allows you to require suppliers to execute the requested corrective actions within a certain amount of time as well as upload evidence of their corrections to ensure adjustments have been made. Users have the option to automate, manually select, or create their own specific CAPAs to address identified risk or noncompliance. Once the corrections have been submitted and approved, an updated report will populate providing you with a newly calculated Risk Index (RI) and compliance score.

The screenshot shows the 'Assessment Selection' and 'CAPA Management' sections. The 'Assessment Selection' section includes options to 'Select Existing' or 'Create New' assessments, with fields for 'Assessment Scheme' and 'Assessment Name'. The 'CAPA Management' section displays a specific question: 'Do you ensure that high security seals (ISOPAS 17712 compliant) are affixed to all outbound containers?'. It shows the current answer as 'No' and a 'CAPA Assigned' status. A 'New Answer' section is visible with 'Yes' selected and a 'CAPA 1' assigned, which includes instructions to upload digital photos of the seals.

Email Communication and Translation

SCM provides users with a full functioning email tool that will store and track all communication sent to your suppliers, provide read receipts, and automatically translate text into the recipients' native language to solicit effective and productive correspondence. SCM's read receipts provide users visibility into their email communications by identifying messages as that are returned as undeliverable. These features allow you to prove your due diligence in communicating with your operations and easily identify incorrect contacts.

Third Party & Audit Administration

BSI manages audit and supply chain compliance programs for multiple Fortune 500 companies in more than 90 countries. BSI Client Services Analysts (CSAs) are here to support clients through the implementation process and assist them with any technical questions. For a more hands on approach in managing your global supply chain operations through the SCM system, BSI provides Managed Services at an additional fee. With Managed Services, your dedicated BSI Client Services Analyst becomes a critical extension of your team by managing assessment scheduling and CAPAs, presenting Quarterly Business Reviews, actively identifying compliance and risk threats, and communicating with your global suppliers.



For more information, please contact:

BSI America Professional Services Inc.
4250 Drinkwater Boulevard, Ste 210
Scottsdale, AZ 85251
Tel: +1 480 421 5099

BSI Group - UK
389 Chiswick High Road,
London, W4 4AL
Tel: +44 0845 080 9000

BSI Group – Asia Pacific
23rd Floor, Cambridge House, Taikoo Place,
979 King's Road, Island East, Hong Kong
Tel: +852 3149 3300