

Page 10

National Annex for EN 1994-2

Delete “2.4.1.2 (5) ” and replace with “2.4.1.2 (5)P”.

Delete “2.4.1.2 (6) ” and replace with “2.4.1.2 (6)P”.

Page 12 and 13

1.2.2

Delete the following:

“ EN 1993-1-3¹, EN 1993-1-5¹, EN 1993-1-11¹”
and replace with :

“EN 1993-1-3: 2006, EN 1993-1-5: 2006, EN 1993-1-11: 2006”

Delete footnote at bottom of page: ”¹ To be published”

1.2.3

Delete the following:

“EN 1990: Annex 2¹, EN 1992-2¹ and EN 1993-2”

and replace with:

“EN 1990: 2002 : Annex A2, EN 1992-2: 2005 and EN 1993-2: 2006”

Page 29

5.4.2.2(2)

Definition of ψ_L – insert “should” between “which” and “be”

Page 41

6.2.2.4(3) Delete existing text and replace with the following:

“For cross-sections in Class 3 and 4, EN 1993-1-5, 7.1 is applicable using as M_{Ed} the total bending moment in the considered cross section and both $M_{pl,Rd}$ and $M_{f,Rd}$ for the composite cross section.

Page 42

6.2.2.5(3) *In the NOTE delete the fourth sentence and replace with:*

“Also where the stress σ_{cp} is tensile (that is, $\sigma_{cp} < 0$) and $\sigma_{cp} > \sigma_{cp,0}$, then σ_{cp} should be replaced by $\sigma_{cp,0}$ in equations (6.2a) and (6.2b) of EN 1992-1-1:2004, 6.2.2, with the recommended value $\sigma_{cp,0} = -1,85 \text{ N/mm}^2$ ”

Page 55

6.6.5.5(2) *Delete “a lower class” and replace with “Class 3 or Class 4”*

Page 68

6.7.4.2(6)

Delete comma “,” in Expression (6.48)

Page 74

6.8.5.4(2) *delete “ $\sigma_{s,min}$ ” and replace with “ $\sigma_{s,min,f}$ ”*

Page 80

7.2.2(2): *delete “EN 1991-1-1:2002” and replace with: “EN 1992-1-1:2004”*

7.3.2(1) *delete line between “and” and “EN 1993-2”*

Page 88

9.4(5) *in line 6 delete: “a web in the bottom concrete flange”*

and replace with: “a web to the bottom concrete flange”

Delete existing Figure C.1 and replace with the following:

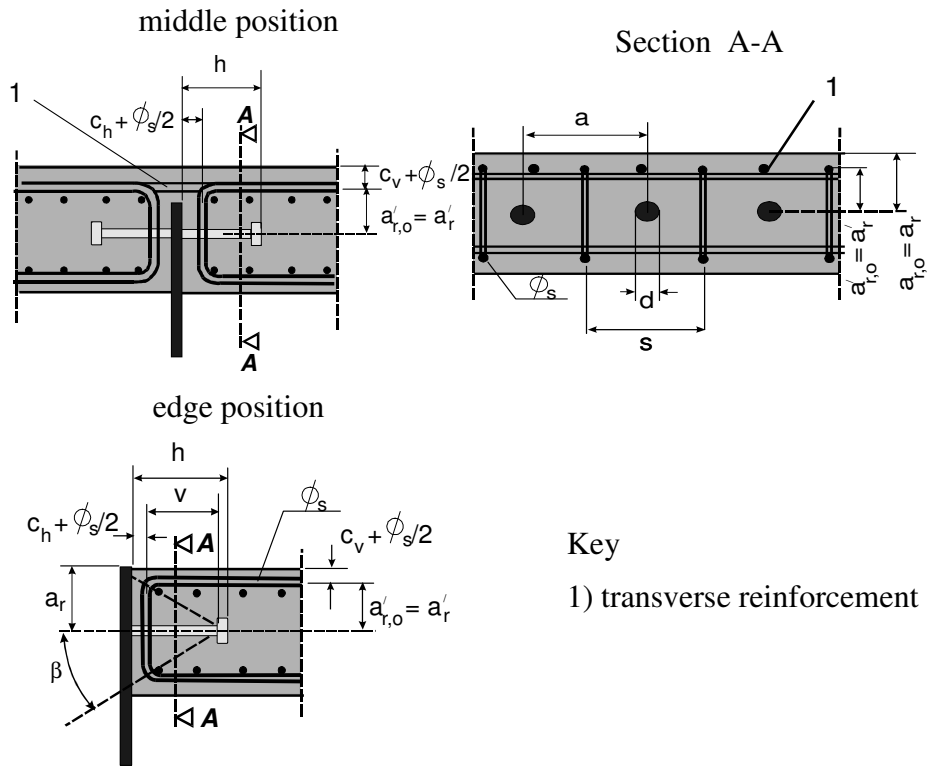


Figure C.1: Position and geometrical parameters of shear connections with horizontally arranged studs