



IPC-A-610

Kitemark for PCB Assembly

The Kitemark

The ultimate sign of quality and safety

Stand out in a highly competitive market with the IPC-A-610 Kitemark. Your route to demonstrating continuing commitment to quality that is recognised and trusted by OEM specifiers and purchasers world wide.

Gain the IPC-A-610 Kitemark and benefit from:

- A competitive edge
- Confidence to win more contracts
- A clear statement of your commitment to quality
- Ongoing independent assessment to IPC-A-610
- Listing in our searchable CEM Kitemark database

raising standards worldwide



What does the Kitemark Scheme cover?

The world's Original Equipment Manufacturers (OEMs) are increasingly subcontracting the PCB assembly process to Contract Equipment Manufacturers (CEMs). With no differentiator in a crowded marketplace it is hard for purchasers to know the relevant capabilities offered by CEMs. The Kitemark scheme has been specifically developed to enable specifiers and purchasers to easily assess a CEM's level of competence. It also ensures that the finished assembly has been built in accordance with the requirements of IPC-A-610.

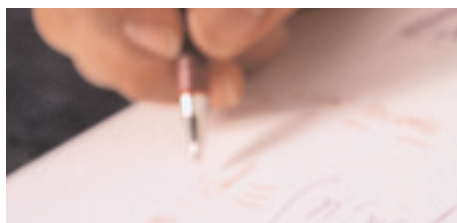
IPC-A-610

IPC-A-610 "Acceptability of Electronic Assemblies" is published by IPC, an established Standards developing body and member of the IEC. It is a "de-facto" world standard for quality assurance and visual acceptance of electronic assemblies and has been adopted by ANSI and the US Dept. of Defense as ANSI/IPC-A-610.

Revision D – Lead free

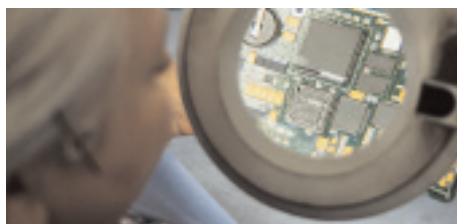
The IPC-A-610 Kitemark covers the new Revision D of the standard for the visual acceptance of the latest Lead-free soldering. Demonstrate your Lead-free capabilities with the IPC-A-610 Kitemark.

What does the IPC-A-610 Kitemark involve?



1) Quality Plan Assessment

The quality plan specifies the particular operations necessary to ensure that the assembly process continues to comply with the requirements of the standard.



2) Product Inspection

Regular on-site inspection of selected assemblies to the requirements of the standard.



3) Ongoing Assessment

Continuing assessment to ensure ongoing implementation of the quality plan thereby ensuring the continuing compliance of the finished product.

What does the IPC-A-610 Kitemark mean?

Reassurance ✓

The Kitemark is one of the best known and respected certification marks in the World. Independent assessment on an ongoing basis provides reassurance that relevant requirements have been met or exceeded.

Quality ✓

Kitemark certification is voluntary. Therefore, Kitemark licensees are making a strong public commitment to quality and have confidence in their products and processes.

Confident Procurement ✓

IPC-A-610 is now ubiquitous in purchasing documentation. The IPC-A-610 Kitemark enables the CEM to demonstrate both compliance and capability to the customer, with the authority of a third-party's, ongoing, independent assessment.

To find out more about this scheme or to search for an IPC-A-610 Kitemark licensed CEM please visit...

Maylands Avenue, Hemel Hempstead, Hertfordshire HP2 4SQ United Kingdom
Tel: +44 (0)1442 230 442 Fax: +44 (0)1442 231 442

www.bsi-pcbassembly.com

raising standards worldwide

BSI
Product Services