

**bsi.**

...making excellence a habit.™

# BSI Kitemark™ for Smart Locking Devices



Build trust, manage risk and embrace opportunity



# Build trust in your smart connected products

Smart locking devices offer improved flexibility and functionality aligned with the emerging digitally connected world, enhanced user experiences, and ultimately offer a wider array of control mechanisms for accessing your home.

IoT technology can enable the homeowner to control how user access is achieved or granted to others in real time, and to whom and when the homeowner wishes.

In essence you can issue keys to, and collect keys from, anyone from anywhere, when it suits you.

However, any IoT connected product (including smart locking devices) is vulnerable to external threats and potential cybersecurity vulnerabilities. Cybersecurity is naturally an even greater concern for a security product such as a smart locking device.

The increasing industry and homeowner awareness of this threat potential can contribute to a lack of consumer trust in IoT connected devices and reduce business confidence in the return on investment in this technology.

However, when combined with industry-leading accredited certification of mechanical locking devices, digitally-connected access and control has the potential to add not just functionality and convenience, but also further layers of security to your home.

## Typical standards tested

- **Mechanical security**

- Cylinders – **TS 007 – 2** - *enhanced security mechatronic cylinders and associated hardware* or **TS 621** - *electronic door locking devices*
- Electronic single point lock – TS 621
- Electronic multi point lock – TS 621
- Mechatronic furniture – TS 621

- **Cybersecurity (Residential)**

- ETSI EN 303 645 / ETSI TS 103 701
- OWASP ASVS/MASVS test standards

To support your business journey in a digital world, and to provide homeowners with confidence in IoT connected devices, BSI has developed Kitemark certification for smart locking devices in a robust, testing and certification process, saving cost and time for certification of all types of locking devices, mechatronic door locking furniture, and enhanced security cylinders for which mechanical performance standards exist either nationally or globally to suit clients' needs.



# How can the BSI Kitemark for smart locks help?

The BSI kitemark for smart locking devices is designed to help easily identify devices that can be trusted to be safe, secure, and functional.

The BSI Kitemark proves that a product has been tested for functionality, and security. It is not a one-time activity, and continued assurance is provided through annual assessments of the product, and the relevant quality management systems for the ongoing production. Robust and internationally recognized, the BSI Kitemark can help enhance a manufacturer's reputation and boost customer confidence.



Application

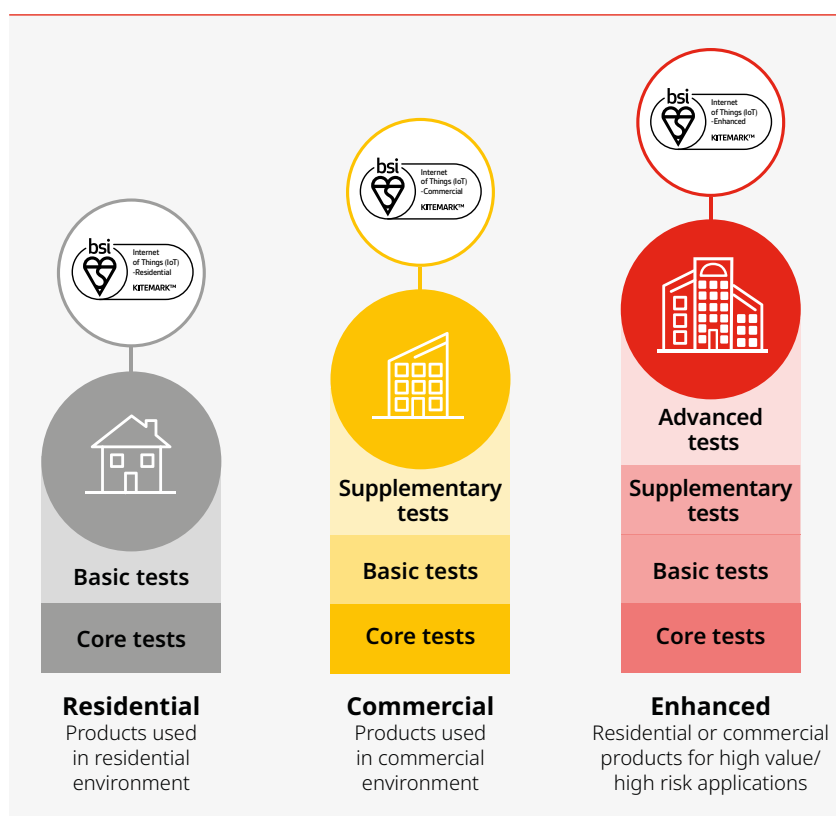
Type Testing

Initial Factory Assessment

Continually Reflecting change  
Standards/Accidents/Regulations  
Technology/ Market expectations

There are different levels of BSI Kitemark for IoT devices:

- Residential products used in a residential environment
- Commercial products used in commercial environment
- Enhanced residential or commercial products for high value/high risk applications



# BSI in collaboration with Secured by Design (SBD)



Secured by Design (SBD) is the official police security initiative that works to improve the security of buildings and their immediate surroundings to provide safe places to live, work, shop, and visit.

In 2022, SBD introduced the 'Secure Connected Device (SCD)' accreditation scheme in-line with government legislation for companies providing Internet of Things (IoT) connected products. Without the appropriate levels of security, any internet-connected device or app is at risk of providing cyber criminals with the 'key' in accessing and stealing personal data.

**BSI is an IoT certification body for the Secure Connected Device program.**



## Why BSI?



BSI has been developing world-leading standards for over 100 years and continues to break new grounds. Our blend of heritage and newness makes us unique – we are the only organization that can offer a powerful combination of innovation and international reach.

We work closely with leading manufacturers to ensure their products meet the latest regulations to gain market access. We focus on delivering testing and certification partnership underpinned by quality, safety, reliability, and accuracy aligned to your product development requirements. That's why we're best placed to help you understand standards and to meet the requirements.

At BSI, we share knowledge innovation, and best practice to help people and organizations realize their potential. We are client-centric, agile, and collaborative

**BSI: Inspiring trust for a more resilient world.**

**bsi.**

bsigroup.com

**Get in touch today and find out more**

Call: **+44(0) 345 086 9000**

Email: **productcertification.sales@bsigroup.com**

Visit: **bsigroup.com/iot-uk**

