



Supplier Compliance Manager[®]

Security-Based Approach to
Supply Chain Operations

bsi.

 **scm**
Supplier Compliance Manager[®]

SUPPLIER COMPLIANCE MANAGER®

Security-Based Approach to Supply Chain Operations

In this global economy, your supply chain has become more extensive and complex. Maintaining the integrity of your cargo and the reliability of its delivery has been further complicated by various political factors and serious security threats around the world. In addition, the U.S., Canada and the European Union have clamped down on cargo security and increased inspections to ensure manifests are correct and cargo entering its ports does not contain contraband.

BSI's Supply Chain Solution will give your company state-of-the-art supplier risk assessments and accurate metrics to substantially mitigate risks to your cargo and your reputation as well as meet the demands of different government security schemes.

With Increased Security Measures on cargo moving through or entering the United States, Canada or Europe, Customs Trade Partnership Against Terrorism (C-TPAT), Partners in Protection (PIP) or Authorized Economic Operator (AEO) certification is vital to import freight quickly. However, many companies that are already C-TPAT, PIP or AEO certified, or are considering becoming certified, struggle with the mandates for the collection, assessment and reporting of Business Partner risks to comply with program regulations.

BSI offers **Supplier Compliance Manager®(SCM)**, our groundbreaking, web-based hosted solution designed to facilitate and expedite your organization's C-TPAT/PIP/AEO compliance. Supplier Compliance Manager® is the only tool you need to communicate with your Business Partners, track their completion of security risk assessments based on C-TPAT/PIP/AEO compliance requirements, review their compliance and risk status, and report on your organization's overall compliance.

Additionally, the tool makes use of BSI's robust proprietary global cargo tampering data and terrorism risk modeling to better assess the potential risk of your suppliers worldwide. So you're getting much more than a surveying tool — you're getting valuable insight incorporated into your security assessments and delivered to your desktop.

Supplier Compliance Manager® can also help to significantly reduce the cost of C-TPAT/PIP/AEO certification. Our low-cost solution helps defray high manpower costs involved in compiling and maintaining C-TPAT/PIP/AEO certification data. With our flexible pricing structure, you can choose to pay for your own Business Partner assessments or transfer the cost to your Business Partners. This gives you the ability to choose the option that best fits your budget.

Whether your company is already C-TPAT/PIP/AEO certified or is ramping up for certification, SCM helps to make the time-consuming and complex tasks of managing and reporting Business Partner risk data a simple, streamlined process. And now that 200 U.S. Customs and Border Protection Specialists are trained on the tool, C-TPAT audits will go smoother as the specialists are able to understand and utilize your Supplier Compliance Manager® reports and data.

Customs and Border Protection Specialists are trained on SCM's sophisticated supplier risk modeling ability and mitigation processes.



Streamlined Data Collection

Getting complete, insightful data from your Business Partners is easy with Supplier Compliance Manager®. From your desktop, you can e-mail requests to your Business Partners to complete a self-assessment using our template emails or customize your messages with your company logo.

Upon logging into the Business Partner section of SCM, your Business Partners will be asked to complete a company profile. Using the information they provide, partners will be presented with one of 10 potential self-assessment questionnaires based on business type classification and security criteria. This targeted approach reduces the time your Business Partners will spend on their self-assessments, while also ensuring that the information collected is pertinent and applicable to your C-TPAT/ PIP/AEO certification and security needs.

If you have chosen to pass the cost of the assessments to your Business Partners, they will be able to conveniently pay for their assessment online via credit card through secure PayPal technology.

Built-in e-mail communication tools not only will assist you in following up with Business Partners who have yet to complete their self-assessments, but also remind you to request updates on an ongoing basis with a customizable timeframe.



FEATURES

- 24/7 Web-based tool collects Business Partner risk information required for C-TPAT/PIP/AEO certification
- Supplier assessments are analyzed against proprietary cargo tampering and terrorism data
- Customized questionnaires are available with your organization's specific requirements and standards
- Patented mathematical modeling automatically analyzes and scores your suppliers' assessments
- As government program standards change, SCM questionnaires will be updated automatically.
- Dashboard-style reporting includes pooled or individual results, along with numerous pre-defined supplier reports
- E-mail your partners directly from the tool as an entire group or select a subset of partners
- Automatic language translation; select English, Spanish, Japanese, Chinese or languages of your choosing
- Flexible pricing models give you the option to transfer costs
- 200 U.S. Customs C-TPAT Specialists are trained on the tool



E-mail Business Partners directly from the system using our templated messages.

Translation Capabilities

BSI knows how hard it is to communicate with a global supplier base. If corporations want to assess foreign-based suppliers, translation tools must be in place to communicate with your Business Partners.

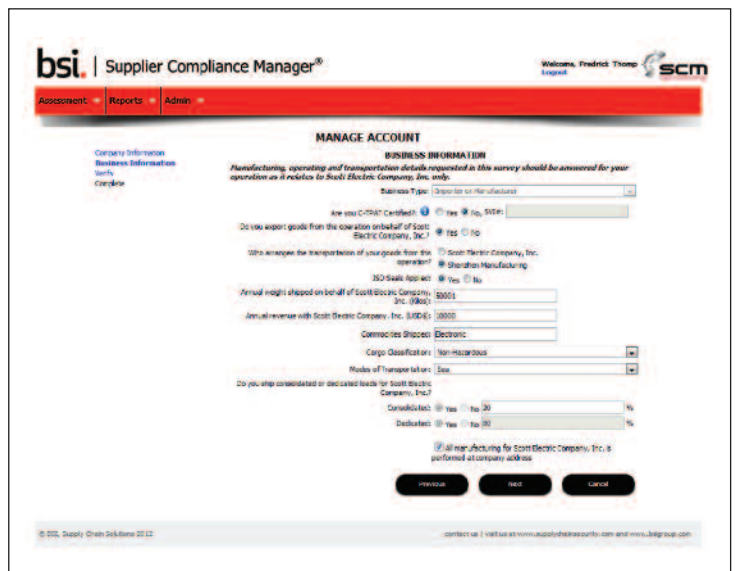
SCM's automated translation feature provides you with a tool to effectively communicate in English, Spanish, Japanese, Chinese or any other language of your choosing. Business Partner responses to security questions will be translated from their selected language back to English so you can view the responses of a supplier. E-mails from you to your supplier base will also be translated into their native language. This feature allows you to communicate with non-English speaking suppliers, which previously couldn't be accomplished without in-country resources.

Customized Assessments

Supplier Compliance Manager® gives you the power to customize your assessments with up to 250 additional questions added under your account. This flexibility gives you the opportunity to assess other topics related to supply chain security or supplier compliance, such as social accountability or environmental concerns.



By selecting a preferred language, Business Partners can view the tool in a language they readily understand.



Customized assessments help to target the risk factors that affect each different type of Business Partner.



Insightful Risk-Based Scoring

In addition to the assessment responses provided by your Business Partners, Supplier Compliance Manager® utilizes BSI's proprietary global risk data to assign each Business Partner three scores, giving you additional perspective on their relative risk or safety based on a number of factors.

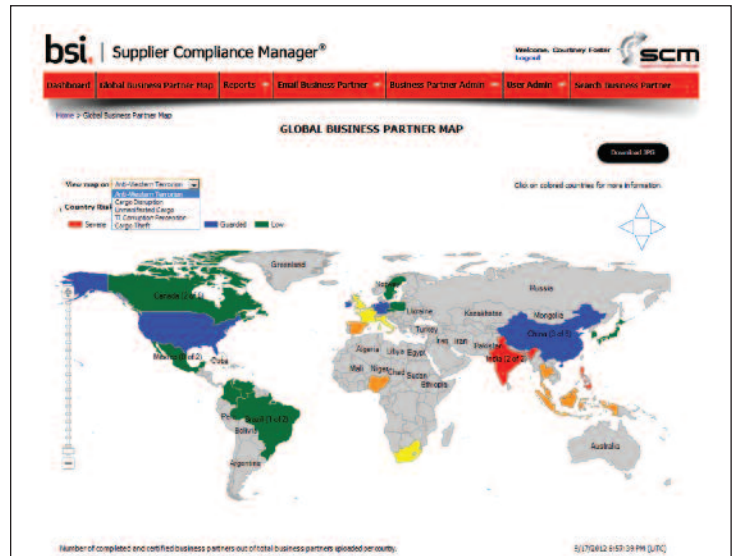
The **Security Assessment Score** uses the data provided during the self-assessment to rank each Business Partner against C-TPAT/PIP/AEO standards. Results are presented as easy-to-understand percentages in three separate categories:

- **“Musts”** are standards that must be met in order to be eligible for program certification.
- **“Shoulds”** are standards that are not required for certification, but are recommended best practices.
- **“Custom category”** reflects your custom questions to track compliance with other supplier standards important to your company.

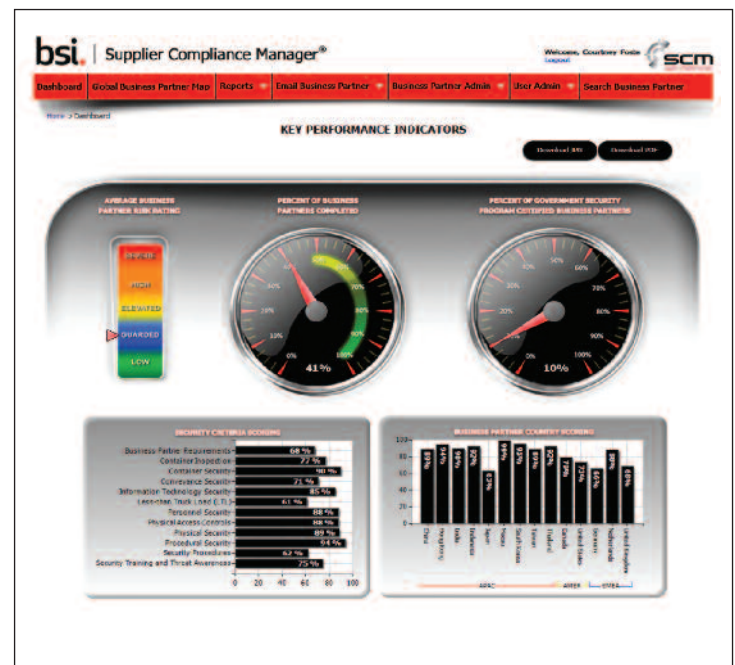
The **Country Risk IndexSM** measures terrorism activity by country based on BSI's terrorism modeling, which utilizes our repository of information on more than 800 terrorist groups geographically based in over 200 countries. This data is regularly maintained to determine terrorist threats to Western business interests.

The **Supplier Risk IndexSM** uses BSI's patented supplier risk algorithm to measure the risk of unmanifested cargo introduction into the supply chain based on components including:

- Country Risk IndexSM
- Supply chain disruption
- Supply chain structure
- Security infrastructure
- And multiple other risk variables



Individual Business Partner's scores are determined not only by their self-assessments, but also by applying our proprietary global threat data for a more comprehensive result.



Our dashboard provides your team with a snapshot evaluation of your Business Partners' compliance, scoring and global security risk rating.

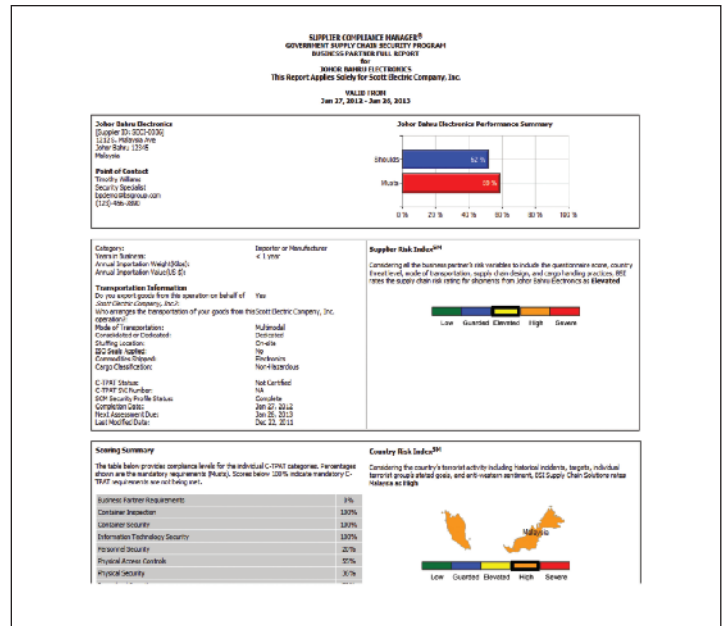
Actionable Reporting and Monitoring

BSI's Supplier Compliance Manager® console features a variety of reporting tools to help you efficiently track and assess your suppliers' progress and ultimate compliance.

Our dashboard gives you quick and easy access to information on the percentage of Business Partners who have completed their assessments, the average participant score, and the percentage of certified Business Partners.

Supplier Compliance Manager® features robust reports that provide you with insight on your pooled Business Partners, individual Business Partners and global risk. Our *Business Partner Risk Report* is a summary report that overviews the risk level for each of your Business Partners. The Business Partner Full Report provides detailed information on a Business Partner so you can delve into the information provided in the self-assessment and our scoring.

Finally, the Country and Global Risk Report gives you quick access to the risk level of each country globally, so you can take this information into account when selecting Business Partners and planning supply routes.



The Business Partner Full Report provides detailed information to help you understand their score and make informed decisions on the business relationship.

Additional Resources

It is likely that the results of your Business Partner assessments will reveal some suppliers who do not meet C-TPAT/PIP/AEO standards. Quite possibly, these suppliers could not be easily replaced. As the world's leading certification body, BSI can assist your team in bringing these suppliers up to standard. Our client managers can conduct in-field assessments to ensure compliance with C-TPAT/PIP/AEO, as well as your specific company goals related to social accountability, environment, quality, and more.

BSI's Supplier Compliance Manager® is more than just a data collection and reporting system. It's backed by the full power of BSI's certification teams and global resources.



Groundbreaking Risk-Based Tool Designed for Your Needs

BSI's Supplier Compliance Manager® is more than just a data collection and reporting system. Not only does our proprietary risk data help give Business Partner assessments insightful depth, but BSI's expertise and advice are always just a phone call away. Put BSI's Supplier Compliance Manager® to work for your organization and benefit from more secure Business Partner relationships, better informed business decisions, and, most importantly, streamlined C-TPAT/PIP/AEO compliance, which translates into faster movement of your imported cargo.

With strong global presence and unsurpassed industry expertise, BSI provides end-to-end supply chain risk management solutions. For over 100 years, BSI has led the way in developing the entire concept of standards. Today, we provide assessment and certification services to organizations at over 80,000 locations in 120 countries.

With more full-time auditors than any other certification body and specialists covering every area of business, we can ensure consistency of experience, expertise and professionalism. We invest in our staff through extensive training to ensure that our auditors are current with industry best practices and can be pro-active to help you improve your supply chain. Our staff are also well-versed in your supplier's national and legislative requirements to facilitate overcoming any exporting hurdles.

Finally, BSI's Supplier Compliance Manager® will enable you to fully assess the security of the route your freight takes as well as facilitate compliance with certifications required by U.S. Customs, Canada Border Services Agency, and the European Union to expedite delivery of your freight.

For more information about Supplier Compliance Manager®, call +91 11 2692 9000 or visit www.supplychainsecurity.com



BENEFITS

- Saves your staff significant man-hours and dollars as supplier compliance efforts are streamlined
- From the factory throughout the supply chain to its destination, SCM provides an accurate picture of true supplier risks.
- Conveniently assesses suppliers' compliance with your company's unique criteria
- Eliminates subjectivity in assessments, providing you with supplier assessment scoring and program consistency
- Facilitates effective communication with your foreign partners
- Conveniently captures compliance program status on one screen, displaying the status of your entire supplier base with drill downs for further detail
- Streamlines your communications from the initial request for assessment to follow-up reminders and results sharing
- Saves your company supplier assessment costs, potentially reducing the cost of your program
- Auditing C-TPAT Specialists can easily utilize your systems



For more information call +91 11 2692 9000
or visit www.supplychainsecurity.com

BSI Group India
The Mira Corporate Suites, A-2 Plot No. 162
Ishwar Nagar, Mathura Road, New Delhi -110065
Tel: +91 11 2692 9000
Email: info.in@bsigroup.com
www.bsigroup.co.in